



**MPS**  
MEDICAL PARTS SOURCE

[www.mpsource.com](http://www.mpsource.com)

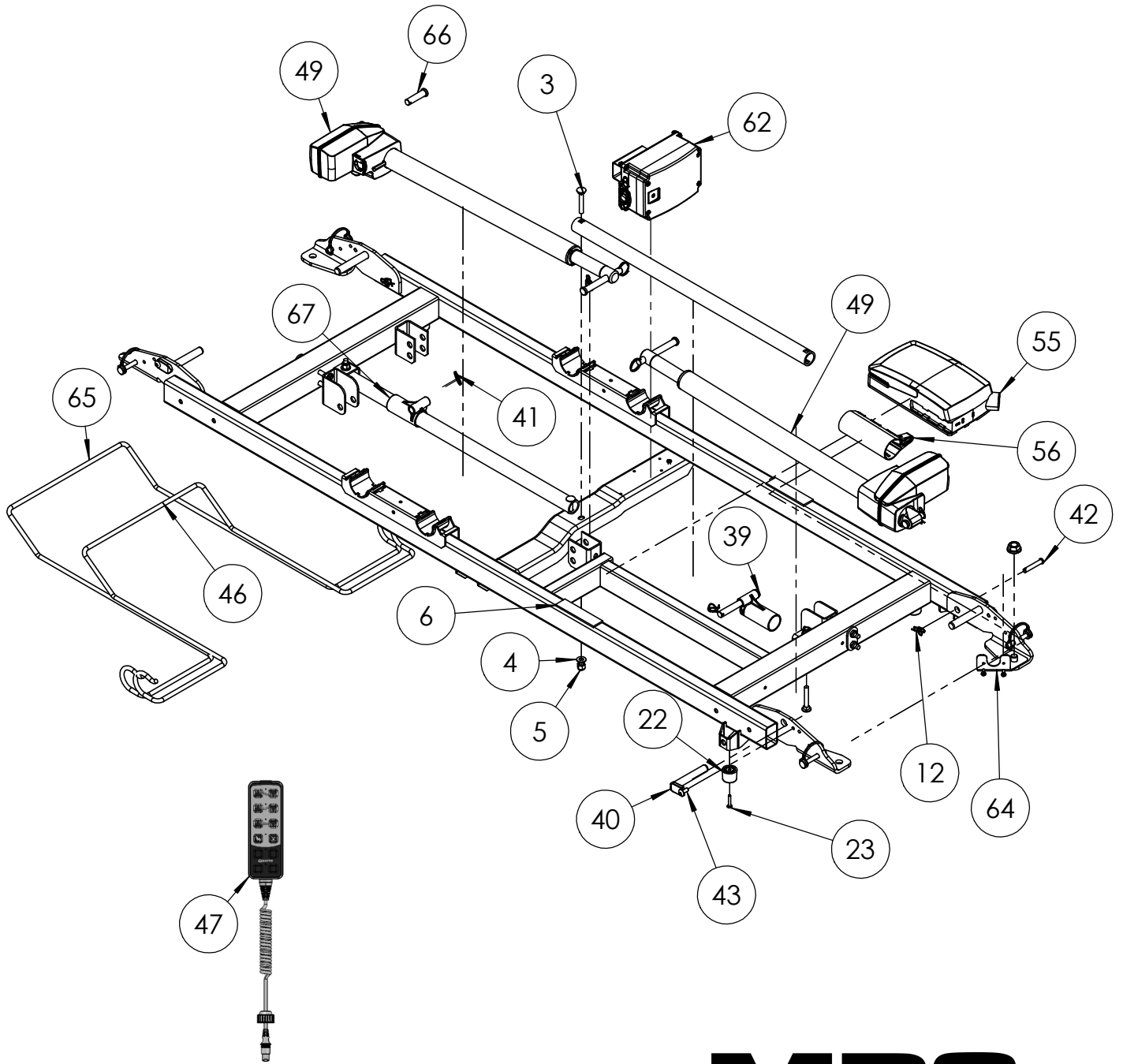
**Parts List**  
**Joerns® Bed Frames**  
**EasyCare®**

(For 600 lb version from Dec 2023-current)  
To avoid injury, read user's manual before using.



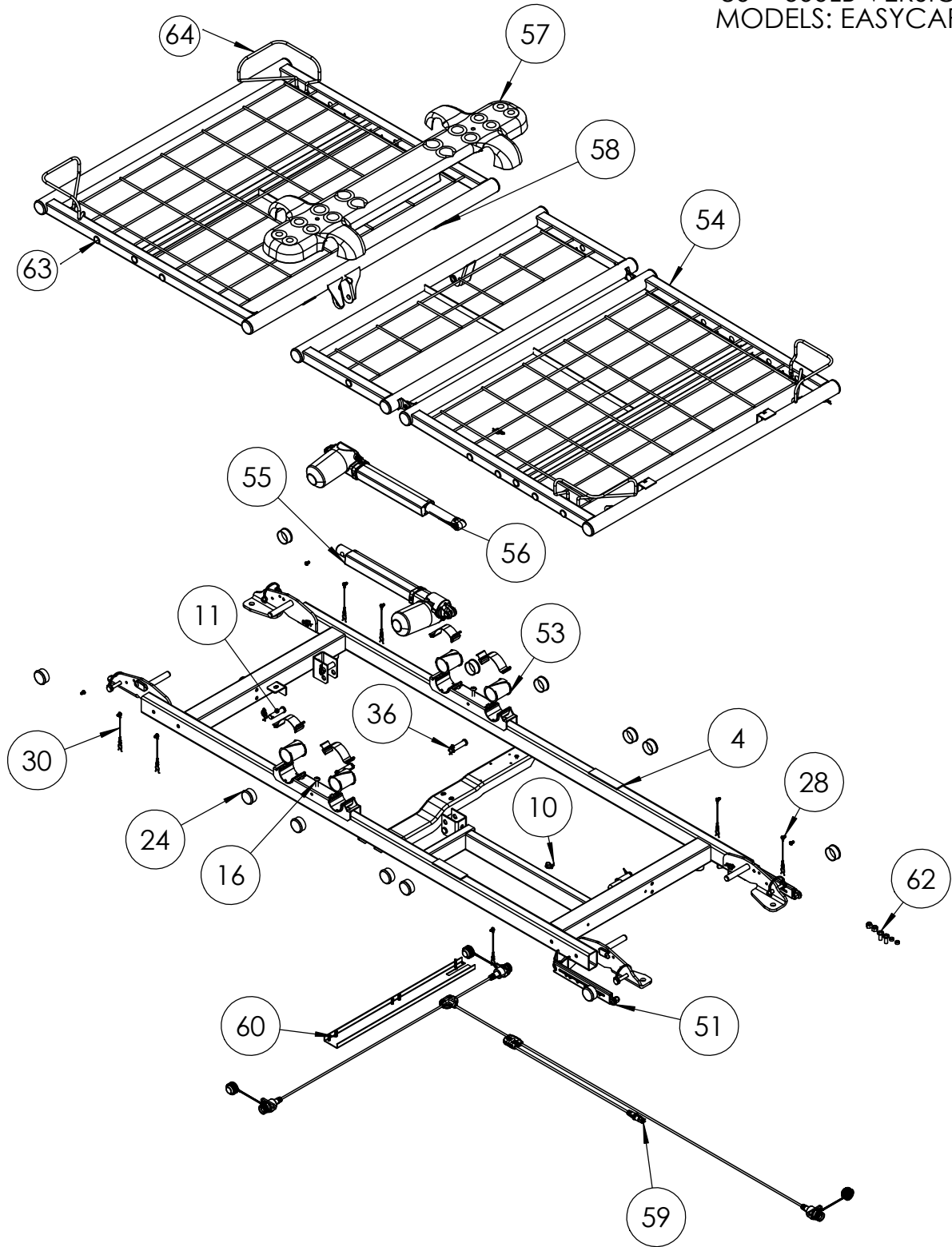


FRAME COMPONENTS  
80" - 600LB VERSION  
MODEL: EASYCARE



ITEM NO.	PART NUMBER	DESCRIPTION
3	12523159	BOLT, CARRIAGE 5/16-18 X 2
4	12847531	WASHER, .700 X .332 X .064
5	12673105	NUT, LOCK 5/16-18 X .430-.450HI
6	11011331	PAD, STOP, KNEE/LEG
12	12800032	PIN, LOCKING COTTER
22	11013253	BUMPER, STOP
23	12551030	SCREW, #10-24 x 1", TPHTFS, BLK OXIDE
39	11012361	PIVOT PIN, LEG/ACTUATOR
40	11012662	PIN, STABILIZER PIVOT
41	12809807	RING, KICK-OUT,.90ID,.075 WIRE
42	11014747	PIN, PANEL MOUNTING
43	12552592	SCREW, 1/4-20 X 5/8, TTHTFS,ZC
46	11011866AL	WIREFORM, BUMPER, 15 <sup>3</sup> / <sub>4</sub> "
47	11017333	PENDANT, ADVANCED, WITH HOOK
49	39002003	KIT, ACTUATOR HI/LOW, 11017295
55	39002004	KIT, CONTROL BOX, CO61, 31009845
56	39002009	KIT, CO61 MNTG BRKT TO LA40
NOT SHOWN	39002005	KIT, CABLE, HD HI/LO ACTUATOR 11017356
NOT SHOWN	39002006	KIT, CABLE, FT HI/LO ACTUATOR, 11017355
NOT SHOWN	39002015	KIT, CO61 COVER REPLACEMENT
62	N111	KIT, BATTERY AND BRACKET, BA16 (BATTERY, BRACKET, CABLE, HARDWARE)
NOT SHOWN	N107	KIT, MAINS CABLE, CLASS I, EXTRA LONG
64	39001704	KIT, BRACKET, STAFF CONTROL HARNESS (BRACKET AND HARDWARE)
65	11012608AL	WIREFORM, BUMPER, 22 <sup>1</sup> / <sub>4</sub> "
66	11012238	PIN, SLEEP SURFACE PIVOT
67	39001070	KIT, REPLACEMENT, HI-LO GLIDE (TWO HI-LO GLIDES AND ATTACHING HARDWARE)
NOT SHOWN	6110444	MANUAL, USER/SERVICE EASYCARE 600LB

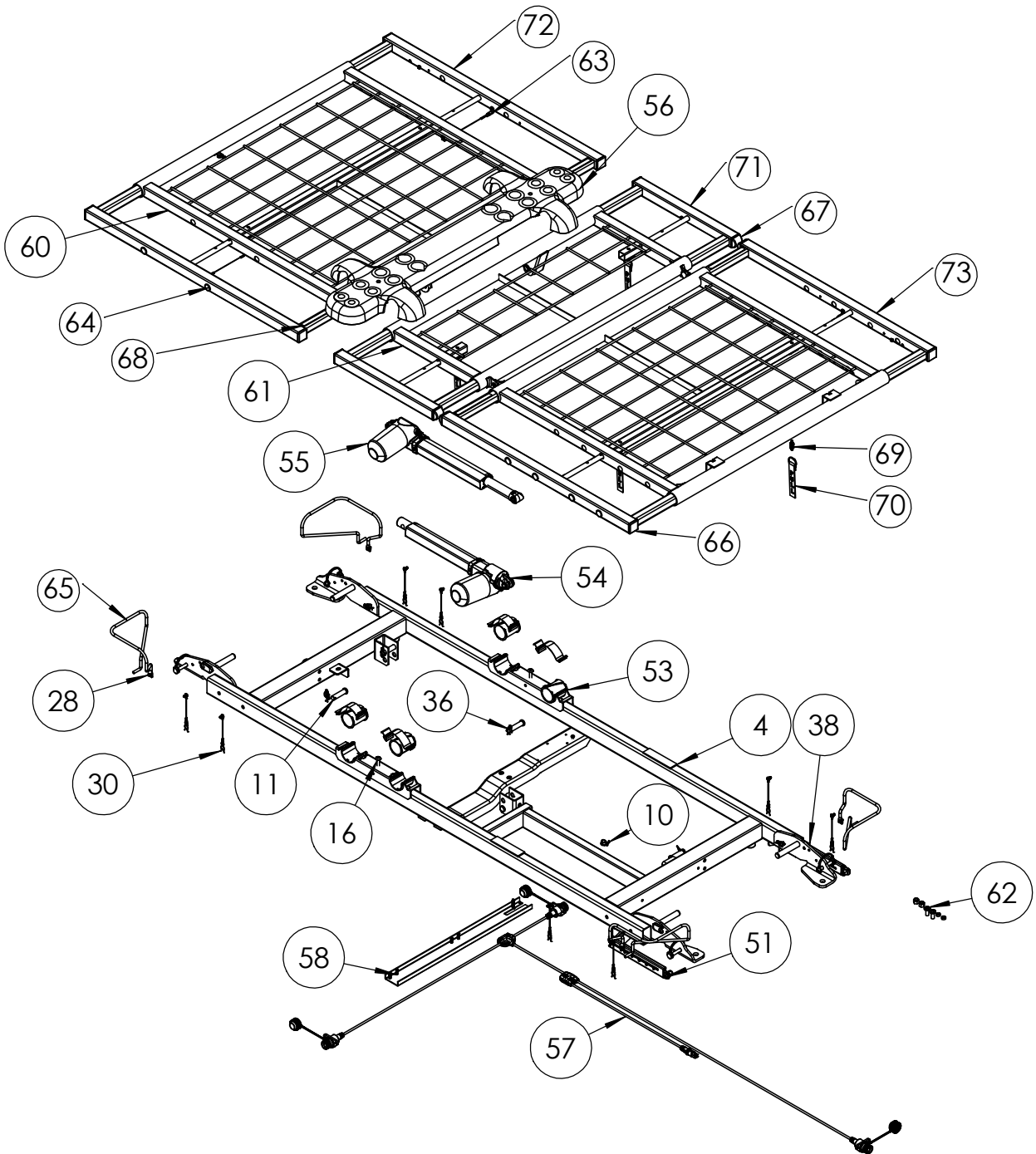
MATTRESS SUPPORT  
35" FIXED WIDTH  
80" - 600LB VERSION  
MODELS: EASYCARE



MATTRESS SUPPORT  
 35" FIXED WIDTH  
 80" - 600LB VERSION  
 MODELS: EASYCARE

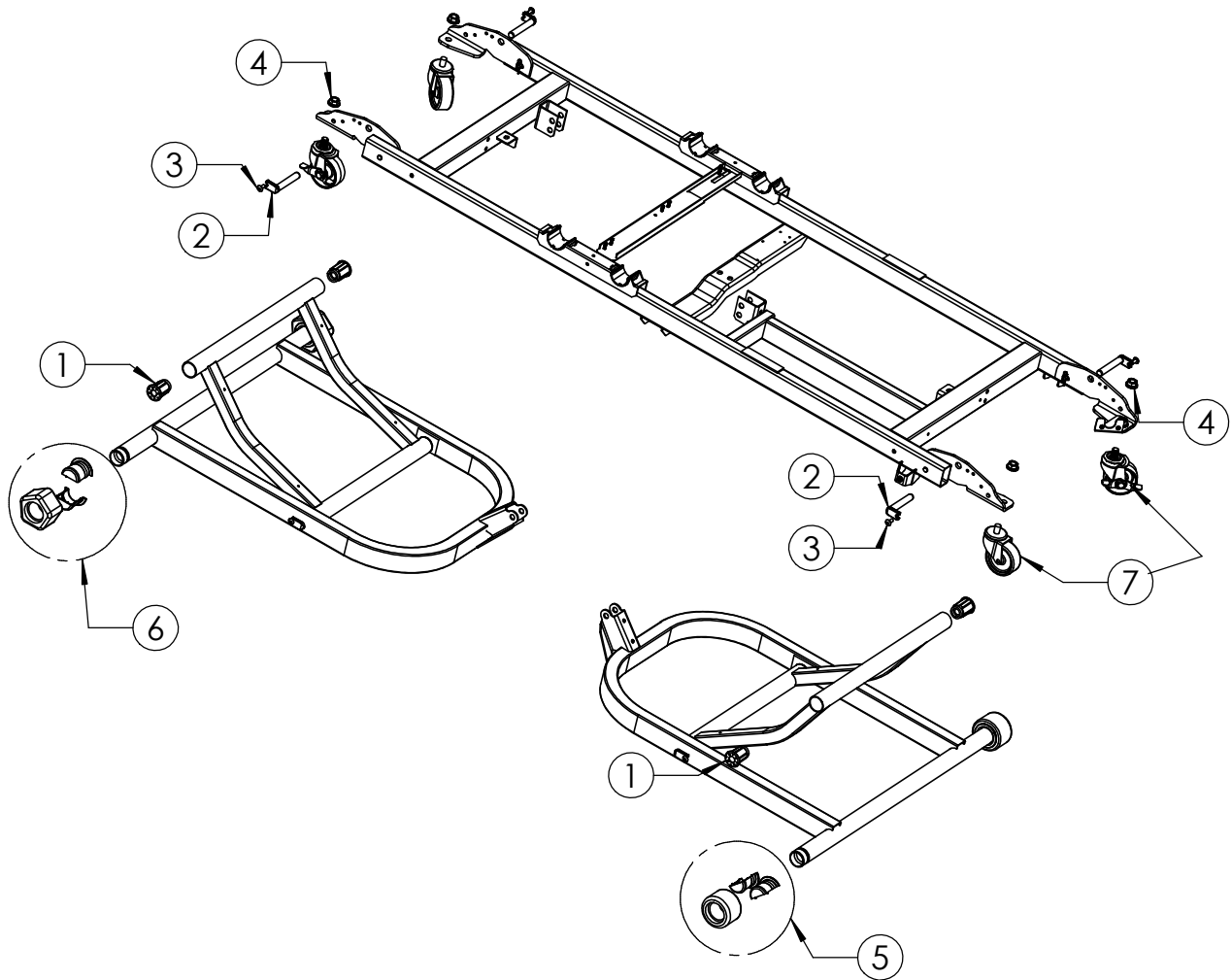
ITEM NO.	PART NUMBER	DESCRIPTION
4	11011331	PAD, STOP, KNEE/LEG
10	12800032	PIN, LOCKING COTTER
11	11012238	PIN, PIVOT SLEEP SURFACE
16	12552590	SCREW, 1/4X-20 X 1 1/2, TTHTF
24	12470474	CAP, TUBE, 1.5" DIA
28	12551013	SCREW, 10-32 X 3/8, PPHTFS
30	24005271	CLIP ASSEMBLY, SIDE RAIL
36	11014113	PIN, CLEVIS, 12mm x 1.8"
51	39000794-M	KIT, FOOT LEVELER, GATCH
53	39000802-M	KIT, SLEEP SURFACE BEARING
54	39001760	KIT, SLEEP DECK, KNEE/FOOT, FIXED WIDTH
55	39002007	KIT, ACTUATOR, BACK, W/ CABLE, 11017336
56	39002008	KIT, ACTUATOR, KNEE, W/ CABLE, 11017337
57	39000980	KIT, SEAT PAN
58	39001707	KIT, BACK SECTION, FIXED WIDTH
59	39001051-M	KIT, CONTROL HARNESS
60	39002013	KIT, SEAT PAN SUPPORT BRKT
62	39000052-M	KIT, BUSHING RIVET REPLACEMENT (REPLACES TWO RIVETS)
63	39001159	KIT, SIDE RAIL PLUGS (16 PLUGS)
64	39001317	KIT, SET, MATTRESS RETAINER (FOUR RETAINERS AND ATTACHING HARDWARE)





ITEM NO.	PART NUMBER	DESCRIPTION
4	11011331	PAD, STOP, KNEE/LEG
10	12800032	PIN, LOCKING COTTER
11	11012238	PIN, PIVOT SLEEP SURFACE
16	12552590	SCREW, 1/4X-20 X 1 1/2, TTHTF
28	12551013	SCREW, 10-32 X 3/8, PPHTFS
30	24005271	CLIP ASM
36	11014113	PIN, CLEVIS, 12mm x 1.8"
38	12552592	SCREW, 1/4-20 X 5/8, TTHTFS,ZC
51	39000794-M	KIT, FOOT LEVELER, GATCH
53	39000802-M	KIT,SLEEP SURFACE BEARING
54	39002007	KIT, ACTUATOR, BACK, W/ CABLE, 11017336
55	39002008	KIT, ACTUATOR, KNEE, W/ CABLE, 11017337
56	39000980	KIT, SEAT PAN
57	39001051-M	KIT, CONTROL HARNESS
58	39002013	KIT, SEAT PAN SUPPORT BRKT
60	39001715	KIT, BACK SECTION, EASYCARE, INT WIDTH
61	39001761	KIT, SLEEP DECK, KNEE/FT, INT WDN, ECS
62	39000052	KIT, BUSHING RIVET REPLACEMENT
63	39001470	KIT, ECSBED, TETHER & HARDWARE
64	39001159	KIT, SIDE RAIL PLUGS (16 PLUGS)
65	39001317	KIT, MATTRESS RETAINER (FOUR RETAINERS AND ATTACHING HARDWARE)
66	12470477	CAP, TUBE, 1-1/4"
67	11014727	PLUG, TUBE, DOMED
68	11014734	LABEL, INDEXING
69	11015773	PIN, SPRING PLUNGER
70	11015774	TETHER, PULL STRAP
71	39001374AL	KIT, KNEE SECTION, SLIDE OUT EXTENSION (FOR BOTH SIDES)
72	39001373AL	KIT, BACK SECTION, SLIDE OUT EXTENSION (FOR BOTH SIDES)
73	39001375AL	KIT, FOOT SECTION, SLIDE OUT EXTENSION (FOR BOTH SIDES)

FRAME COMPONENTS  
 ROLL IN LOW ONLY  
 80" - 600LB VERSIONS  
 MODEL: EASYCARE

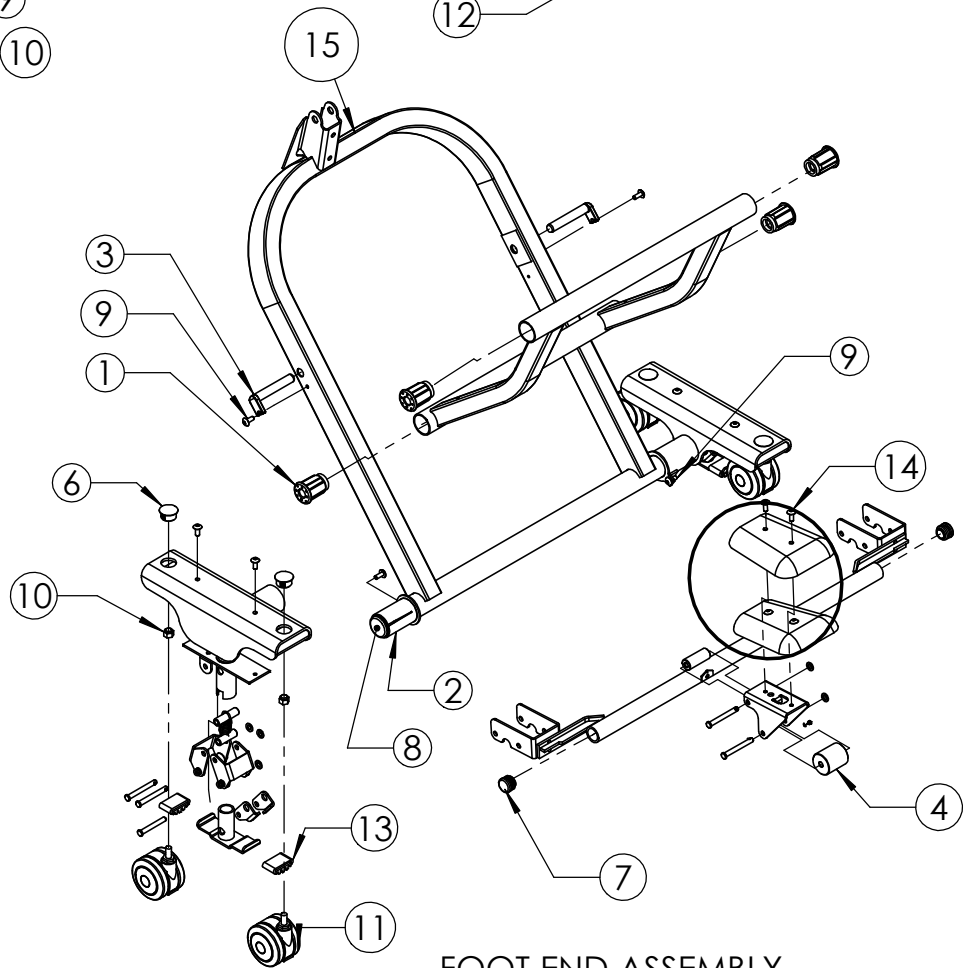
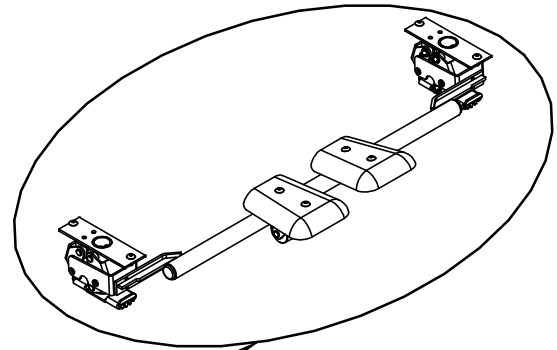
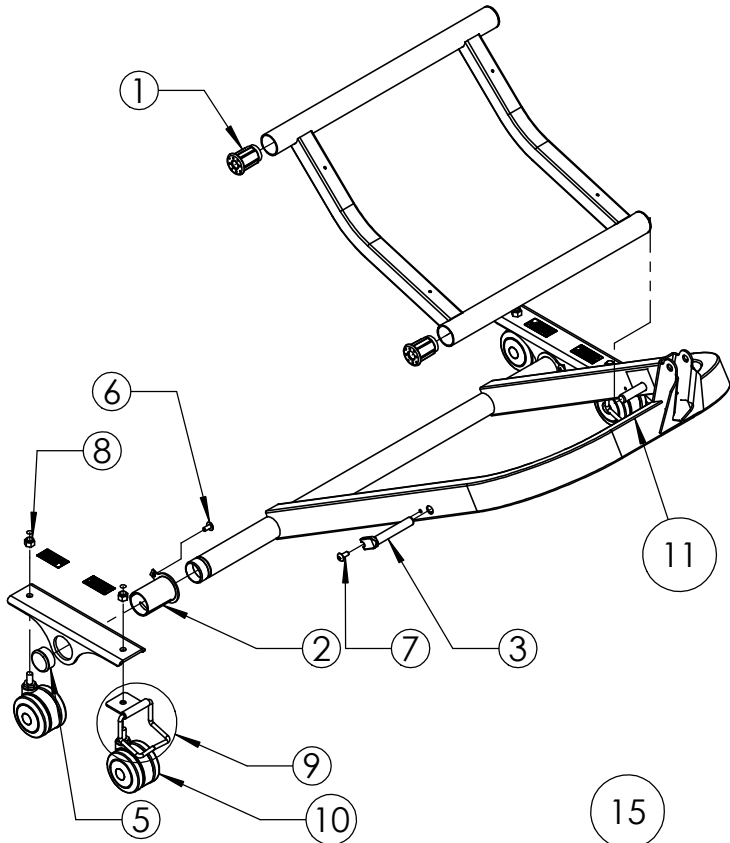


ITEM NO.	PART NUMBER	DESCRIPTION
1	11011230	BUSHING, STABILIZER
2	11012662	PIN, STABILIZER PIVOT
3	12552592	SCREW, THREAD FORMING, 1/4-20 X 5/8"
4	12675024	NUT, 1/2-13 WHIZ LOCK
5	39000792	KIT, ROLLER HUB, ROUND (ONE HUB ASSEMBLY AND ONE ROLLER)
6	39000793	KIT, ROLLER HUB, PENTAGON (ONE HUB ASSEMBLY AND ONE PENTAGON)
7	39000874	KIT, CASTERS (FOUR CASTERS AND ATTACHING HARDWARE)



FRAME COMPONENTS  
SAFETY LOCK  
80" - 600LB VERSIONS  
MODEL: EASYCARE

HEAD END ASSEMBLY



FOOT END ASSEMBLY

FRAME COMPONENTS  
SAFETY LOCK  
80" - 600LB VERSIONS  
MODEL: EASYCARE

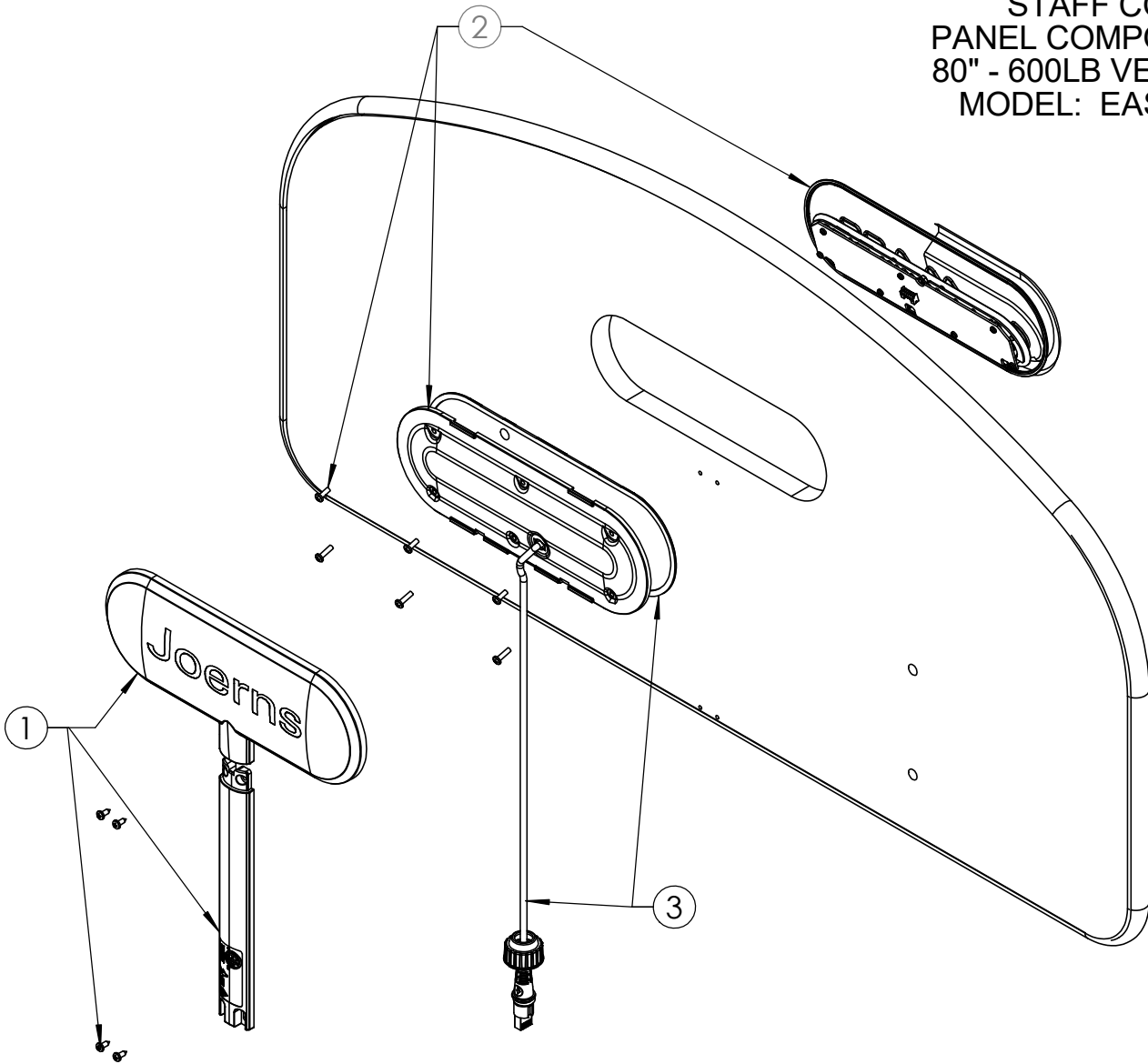
## HEAD END ASSEMBLY

ITEM NO.	PART NUMBER	DESCRIPTION
1	11011230	BUSHING, STABILIZER
2	11012241	BEARING, GRIPLOCK
3	11012662	PIN, STABILIZER PIVOT
5	12470474	CAP, TUBE, 1 1/2" DIA.
6	12552586	SCREW, THREAD FORMING, 1/4-20 X 1/2"
7	12552592	SCREW, THREAD FORMING, 1/4-20 X 5/8"
8	12673718	NUT, LOCK, 3/8-16
9	31009115	ASSEMBLY, CASTER, STRAIGHT LINE
10	39001041	KIT, CASTER 3-INCH (ONE CASTER AND ATTACHING HARDWARE)
11	39001941	KIT, LEG ASSEMBLY, HEAD END

## FOOT END ASSEMBLY

ITEM NO.	PART NUMBER	DESCRIPTION
1	11011230	BUSHING, STABILIZER
2	11012241	BEARING, GRIPLOCK
3	11012662	PIN, STABILIZER PIVOT
4	39001378	KIT, SPRING AND ROLLER (SPRING AND ROLLER)
6	12470037	1" DIA. HOLE PLUG
7	12470472	CAP, TUBE, 1.125" DIA.
8	12470474	CAP, TUBE, 1.5" DIA.
9	12552592	SCREW, THREAD FORMING 1/4-20 X 5/8"
10	12673718	NUT, LOCK, 3/8-16
11	39001041	KIT, CASTER, 3-INCH (ONE CASTER AND ATTACHING HARDWARE)
12	39001371AL	KIT, CARELOCK SUBASSEMBLY (FULL SUBASSEMBLY INCLUDING PEDALS, GRIP PADS, SPRING AND ROLLER, AND ATTACHING HARDWARE)
13	39001376	KIT, PAD, GRIPS (FOUR GRIP PADS)
14	39001377	KIT, FLOOR LOCK, PEDALS (BOTH PEDALS AND ATTACHING HARDWARE)
15	39001940	KIT, LEG ASSEMBLY, FOOT END

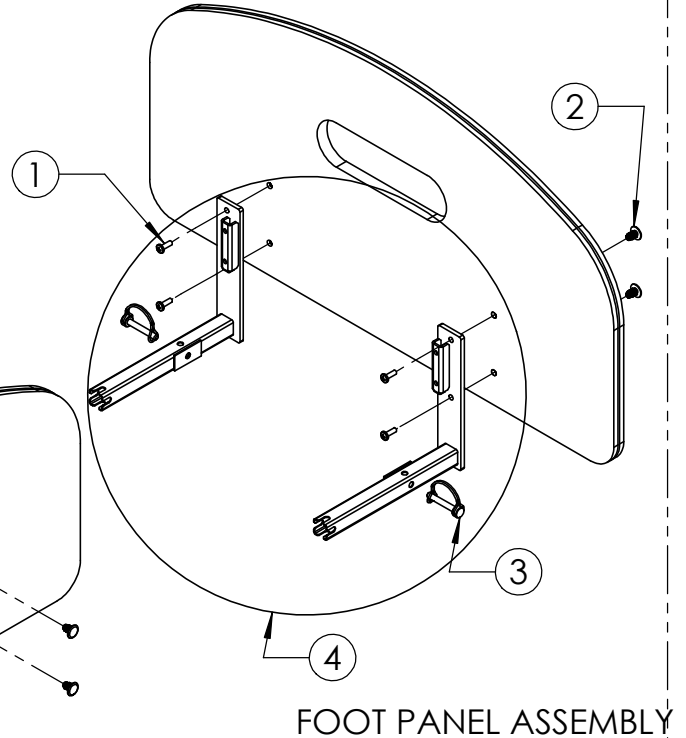
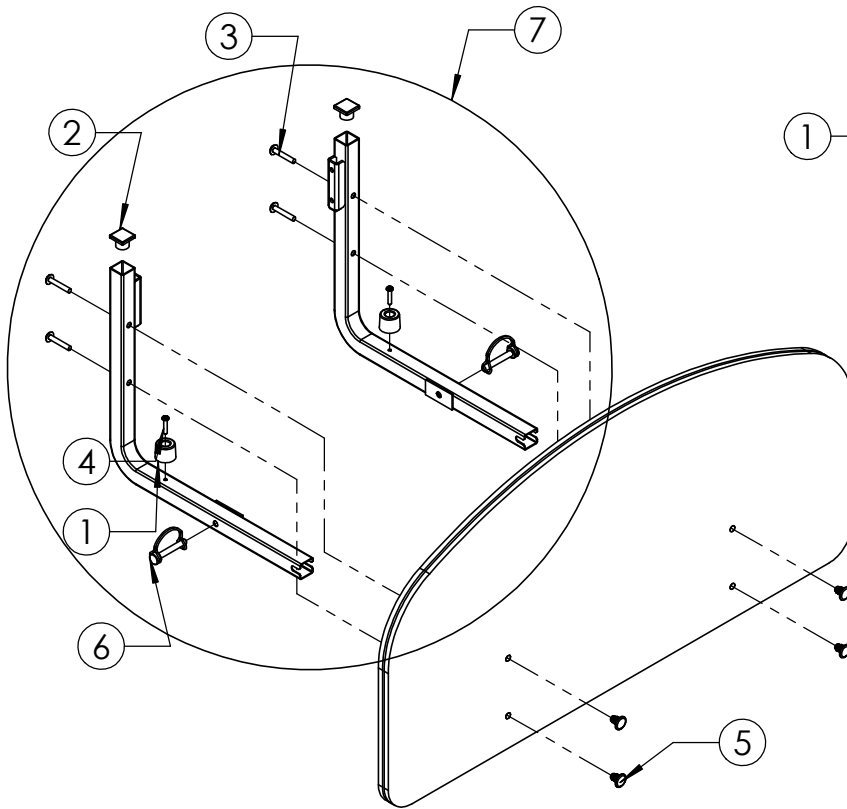
**STAFF CONTROL  
PANEL COMPONENTS  
80" - 600LB VERSIONS  
MODEL: EASYCARE**



ITEM NO.	PART NUMBER	DESCRIPTION
1	39001115	KIT, COVERS, STAFF CONTROL, ADVANCED, SOFT TONE (ATTACHING HARDWARE)(REPLACES BROWN COLOR OPTION)
2	39001113	KIT, STAFF CONTROL, ADVANCED, SOFT TONE (ATTACHING HARDWARE)(REPLACES BROWN COLOR OPTION)
3	39001016	KIT, STAFF CONTROL, CABLE AND COVER (ATTACHING HARDWARE)

PANEL COMPONENTS  
80" - 600LB VERSIONS  
MODEL: EASYCARE

HEAD PANEL ASSEMBLY



FOOT PANEL ASSEMBLY

**HARDWARE, HEAD PANEL**

ITEM NO.	PART NUMBER	DESCRIPTION
1	11013253	BUMPER, STOP
2	12470467	CAP, TUBE, 1" x 1"
3	12542588	SCREW, MACHINE, 1/4-20 X 1 1/2"
4	12551030	SCREW, THREAD FORMING, #10-24 X 1"
5	12640029	NUT, THREAD INSERT, 1/4-20
6	12793116	PIN, SAFETY, 5/16" X 2"
7	39001379AL	KIT, HEAD SECTION, PANEL MOUNTING 80" (ALL PARTS DEPICTED EXCEPT PANEL INSERTS)

**HARDWARE, FOOT PANEL**

ITEM NO.	PART NUMBER	DESCRIPTION
1	12542590	SCREW, MACHINE, 1/4-20 X 3/4"
2	12640029	NUT, THREAD INSERT, 1/4-20
3	12793116	PIN, SAFETY, 5/16" X 2"
4	39001380AL	KIT, FOOT SECTION, PANEL MOUNTING (ALL PARTS DEPICTED EXCEPT PANEL INSERTS)



# MPS

## MEDICAL PARTS SOURCE

**United States**  
2430 Whitehall Park Dr. Ste 700  
Charlotte, NC 28273  
(P) 800.826.0270  
(F) 800.457.8827

**Canada**  
35 Consortium Court  
London, ON Canada N6E 2S8  
(P) 866.546.1151  
(F) 519.451.8662

**United Kingdom and  
Other Countries**  
+44 (0)344 811 1158

**Netherlands**  
+31 (0)88 2080200