

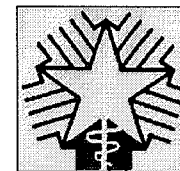
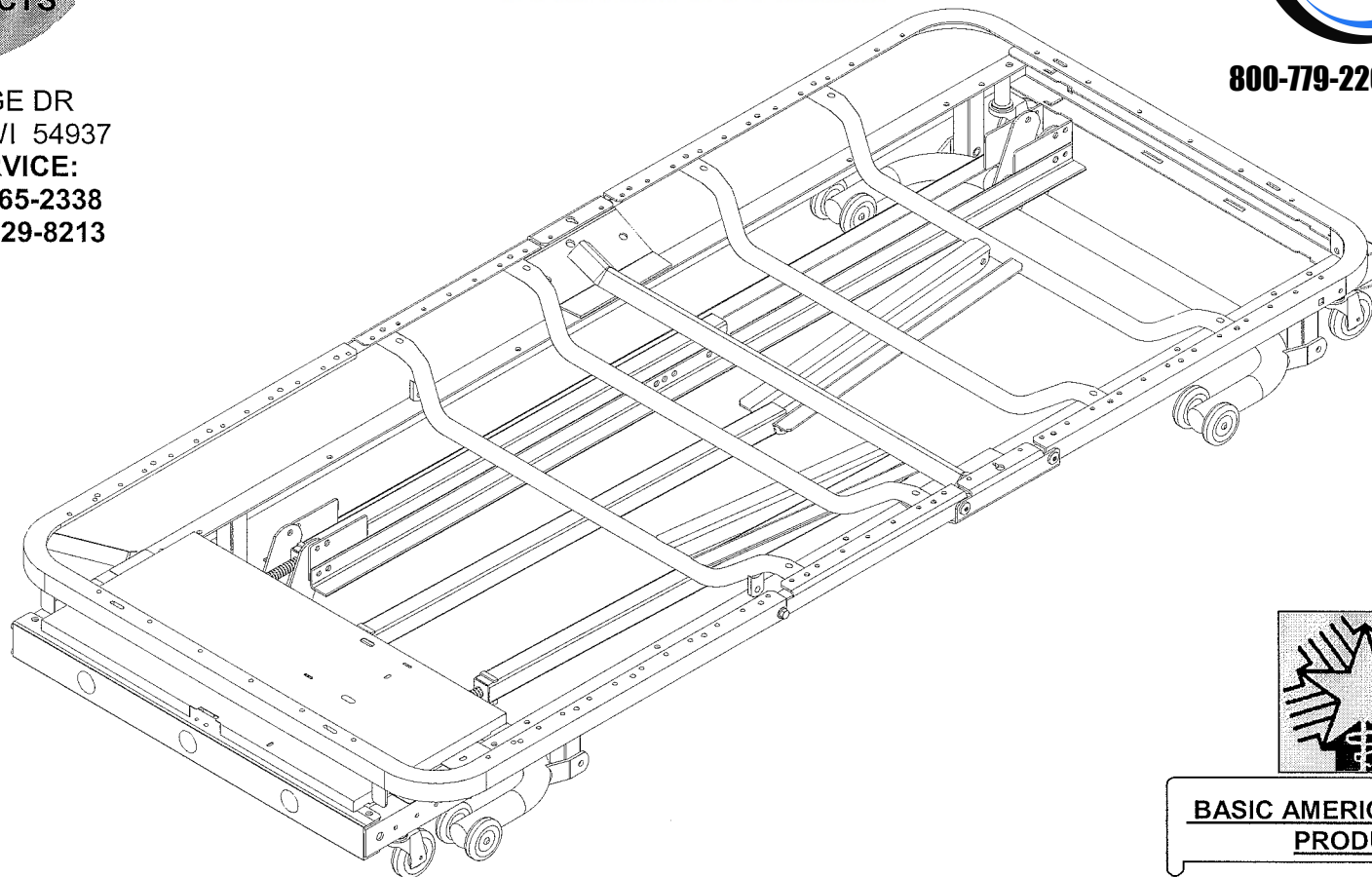
LOMAX BED

999-0634-090
MARCH 8, 2005 (REV. J)



800-779-2260 | 941-342-7725

336 TROWBRIDGE DR
FOND DU LAC, WI 54937
CUSTOMER SERVICE:
PHONE: 1-800-365-2338
FAX: (920) 929-8213



**BASIC AMERICAN MEDICAL
PRODUCTS**

ETL LISTING INFORMATION:

- UL 2601-1
- CAN/CSA-C22.2 NO.601.1

For information on other Basic American products that include: **Patient Aids and Patient Room or Common Area Furniture** please call 800-554-9215 or visit our web site at: www.basicamerican.com
Basic American Medical Products
2935A NORTHEAST PARKWAY
ATLANTA, GA 30360

TABLE OF CONTENTS

SECTION ONE

PAGE 4	INSPECTION MAINTENANCE PLAN
PAGE 5	ASSEMBLY INSPECTION
PAGE 6	SAFETY SUMMARY
PAGE 9	SIDE RAIL INSPECTION PLAN
PAGE 10	BED SPECIFICATIONS
PAGE 11	BOARD SPECIFICATIONS
PAGE 12	FEATURES
PAGE 13	ELECTRICAL/MATERIALS/CONSTRUCTION SPECIFICATIONS
PAGE 14	BED FINISH/GENERAL SPECIFICATIONS

SECTION TWO

PAGE 16	SLEEPING SURFACE ASSEMBLY
PAGE 18	FRAME AND LIFT ASSEMBLY
PAGE 20	ELECTRIC DRIVE PACK/MAINFRAME ASSEMBLY
PAGE 26	ELECTRIC MOTOR ASSEMBLY

SECTION THREE

PAGE 31	TRAPEZE ADAPTER KIT
PAGE 33	FOOT SECTION RATCHET KIT
PAGE 34	FIXED PANEL MOUNTING KIT
PAGE 35	WALLSAVER KIT
PAGE 36	TWIN-TRAX ASSEMBLY

SECTION FOUR

PAGE 39	TROUBLE SHOOTING GUIDE
---------	------------------------

SECTION ONE

BED SPECIFICATIONS

INSPECTION MAINTENANCE PLAN

PACKAGING/HANDLING INSPECTION

INSPECTION OF ALL COMPONENTS

Inspect – Receipt of shipment

1. Check bed components for obvious damage.
2. Inspect power supply cord for cuts and/or damage.
3. Check that the actuator cords are connected properly into the control box.

ASSEMBLY INSPECTION-MECHANICAL

SLEEPING SURFACE, FRAME AND BASE ASSEMBLIES

Inspect – 1 Year

1. Inspect welds on the sleeping surface, frame, and base assemblies for stress fractures.
2. Inspect all fasteners for wear and looseness.

HEAD/FOOT AND HI/LO ACTUATOR/PULL TUBES

Inspect – 1 Year

1. Inspect head, foot, and hi/lo torque tube components for excessive wear.
2. Inspect head, foot, and hi/lo torque tubes for bends, wear or stress damage. Clevis pins on head, and hi/lo pull tubes should not be bent.
3. Tighten all actuator mounting hardware.

CASTERS

Inspect – 1 Year

1. Check locks on both locking casters to ensure they are operational.
2. Check casters to ensure they roll properly.

ASSEMBLY INSPECTION – ELECTRICAL

CONTROL BOX

Inspect – 6 Months

1. Check power cord for chafing cuts or wear.
2. Make sure all attaching hardware is securely tightened.
3. Check electrical connections for wear or fractures.

PENDANT

Inspect – 6 Months

1. Check pendant cord for chafing cuts or wear.
2. Check all pendant functions:
 - Head raises and lowers properly.
 - Foot raises and lowers properly.
 - Bed raises and lowers properly (full electric only).

Note: Follow electrical troubleshooting guide if failures are experienced.

3. Check to make sure each button and associated function correspond (example: Activate HEAD UP button and head section raises).

ACTUATORS

Inspect – 6 Months

1. Check actuator cords for chafing cuts or wear.
2. Check range of movement on all motors to ensure they do not bind in the **FULL UP** or **FULL DOWN** position.

Note: Should binding occur, adjust the pull tube of the actuator by turning it clockwise or counter clockwise (in or out) just enough to allow the motor to shut off automatically. Failure to do so will damage the head, foot, hi/lo function, and the internal gears of the actuator.

3. Lubricate acme screws as needed with petroleum jelly.

This maintenance inspection plan contains guidelines to ensure correct bed maintenance procedures are followed and is included as a reference only. If any problems arise during testing of the bed(s), refer to the owner's Assembly/Operating Manual or contact Basic American Metal Products Customer Service Department for Technical Support at (800) 365-2338.

SAFETY SUMMARY

Warning/Caution labels applied to the bed apply to hazards or unsafe practices that could result in personal injury and/or property damage.

NOTICE

The information contained in this document is subject to change without notice.

Check all parts for shipping damage and test before using. In case of damage, do NOT use. Contact the Manufacturer for further instructions.

WARNING – OPERATING INFORMATION

When using nasal or masked type administering equipment, oxygen or air tubing MUST be routed and secured properly to ensure that tubing does NOT become entangled and eventually severed during normal operation of Manual/Electric bed.

When operating/moving Manual/Electric Beds, ALWAYS ensure that the individual confined to the bed is positioned properly within the confines of the bed. DO NOT let any extremities protrude over the side or between the bed rails when performing these functions.

Pendant cord MUST be routed and secured properly to ensure that cord does NOT become entangled and eventually severed during normal operation of Manual/Electric bed. Keep bed area clear when using electric cords which may get tangled around the bed, side rails or legs during operation of Manual/Electric beds.

Keep ALL moving parts free of obstructions i.e. blankets/sheets, heating blankets/pads, tubing, wiring, etc. and other types of products.

KEEP FEET CLEAR OF U-LEVERS. THEY COULD PINCH FEET WHILE BEING LOWERED.

SAFETY SUMMARY (Continued)

DO NOT use the side rails as push handles for moving the bed.

Trapeze units must be used ONLY in ASSISTING the patient in repositioning or transferring in or out of bed. NEVER allow patients to use a trapeze unit as a total individual weight support.

NEVER permit more than one (1) person on/in the bed at any time.

Body weight should be evenly distributed over the sleeping surface of the bed. DO NOT lay, sit or lean in such a way that your entire body weight is placed only on RAISED head or foot sections of the bed. This includes when assisting in repositioning or transferring in or out of bed.

ELECTRICAL

The bed is equipped with a three-prong (grounding) plug for protection against possible shock hazard. DO NOT, under any circumstances, cut or remove the round grounding prong from any plug used on Basic American Metal Products.

DO NOT remove caution/warning labels applied to bed.

NEVER operate the bed if a cord or plug is damaged, or if it is not working properly; contact Qualified Service Personnel for examination and repair.

SAFETY SUMMARY (Continued)

REPAIR OR SERVICE INFORMATION

Do NOT open assemblies such as the actuators, hand control, and control box. Only trained service personnel certified by Basic American Metal Products are qualified to repair these parts. If uncertified individuals perform work on these products, the warranty is voided.

DO NOT use unauthorized parts, accessories, or adapters other than those authorized by Basic American Metal Products.

Unplug the power cord when performing any maintenance on the bed.

RADIO FREQUENCY INTERFERENCE

Most electronic equipment is influenced by Radio Frequency Interference (RFI). Caution should be exercised with regard to the use of portable communications equipment in the area around such equipment. If FFI causes erratic behavior, shut the bed OFF immediately. Leave OFF while transmission is in progress.

WEIGHT LIMITATION

The weight limitation for Electric Lomax Bed; taking into consideration patient size, proper positioning, realignment, transfer and overall care; is 400 pounds.

SIDE RAIL INSPECTION PLAN

PACKAGING/HANDLING INSPECTION

INSPECTION OF ALL COMPONENTS

Inspect – Receipt of shipment

1. Check side rail components for obvious damage.
2. Check hardware package assuring all hardware is available for proper assembly.

ASSEMBLY INSPECTION – MECHANICAL

SIDE RAIL ASSEMBLY (Some rail options do not include Lomax Bed.)

Inspect – 3 Months

1. Inspect side rails welds for stress fractures.
2. Inspect all fasteners for wear and looseness, replace and tighten as needed.
3. Bent side rails should be replaced immediately.
4. Lubricate all pivot points as needed.

Note: Contact Basic American Metal Products Customer Service Department for Technical Support at (800) 365-2338.

Safety Summary

Side rails when used with a Manual/Electric bed DO NOT fall within any weight limitations. Side rails can be deformed or broken if excessive side pressure is exerted on the side rails. These side rails are for the purpose of preventing an individual from inadvertently rolling/climbing out of a bed. If an individual is capable of injuring himself/herself, an alternative means of preventing the patient from rolling/climbing out of a bed should be initiated.

Additional safety measures should be considered for patients identified as high risk for entrapment. Such patients include those with pre-existing conditions such as confusion, restlessness, lack of muscle control, altered mental status (organic or medication related), or a combination of these factors. Increased risk also occurs when the patient's size and/or weight are inappropriate for the bed's dimensions.

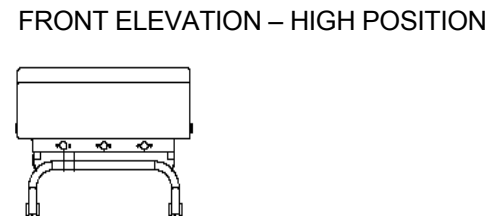
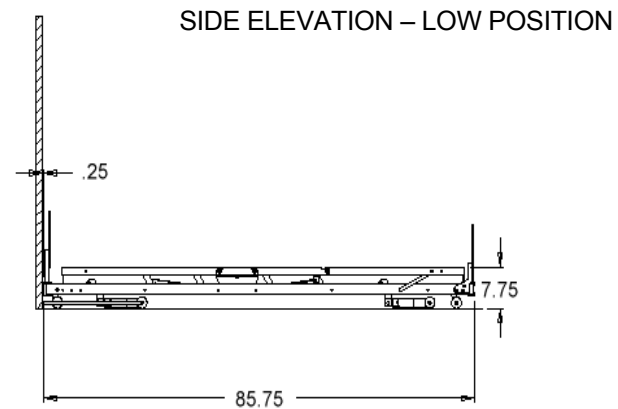
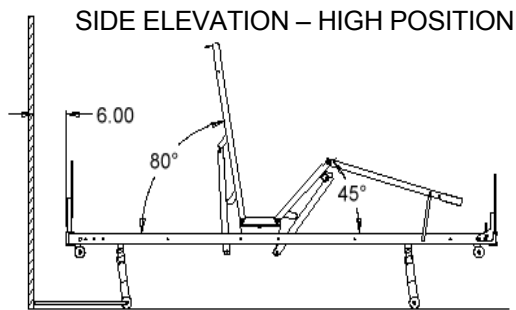
DO NOT use the side rails as push handles for moving the bed.

SPECIFICATIONS DIMENSIONS

Table 1	76"	80"
Overall Length (Includes ½" rubber bumper)	81.75"	85.75"
Overall Width (With rails)	40.50"	40.50"
Overall Width (With boards)	35.88	35.88"
Overall Width (Without boards)	35.25"	35.25"
Length of Mattress Surface	75.75"	79.75"
Mattress Platform Height (Low Position)	7.75"	7.75"
Mattress Platform Height (High Position)	16.50"	16.50"
Maximum Knee Elevation	45 ⁰	45 ⁰
Maximum Head Elevation	80 ⁰	80 ⁰

ALL MEASUREMENTS
ARE IN INCHES UNLESS
OTHERWISE SPECIFIED

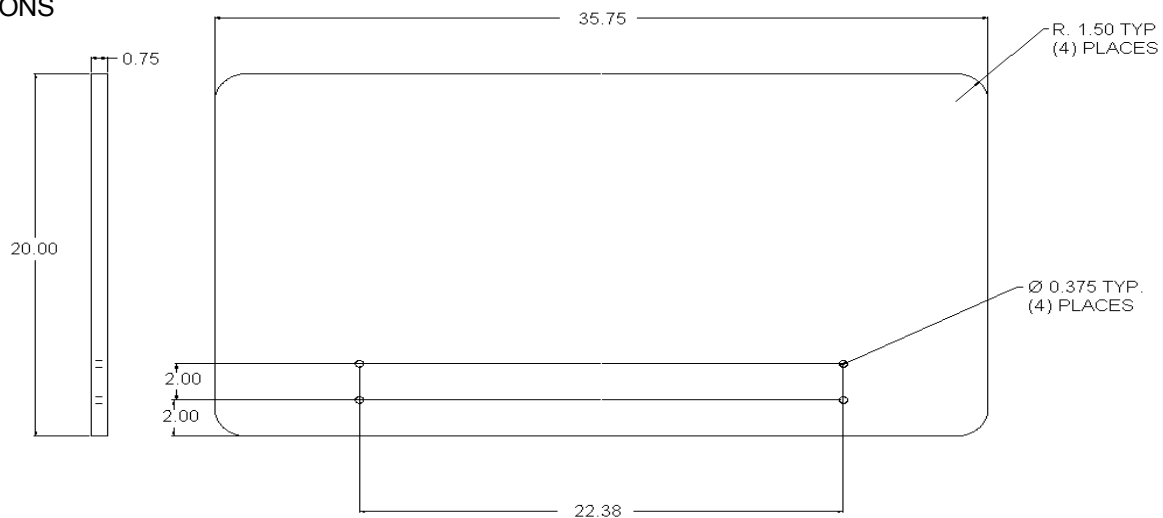
MEASUREMENTS IN
DIAGRAM ARE FOR 80"
BED. 76" DIMENSIONS
ARE LOCATED IN
CHART AT TOP OF
PAGE.



KEEP FEET CLEAR OF U-LEVERS WHEN
OPERATING HI/LO MECHANISM

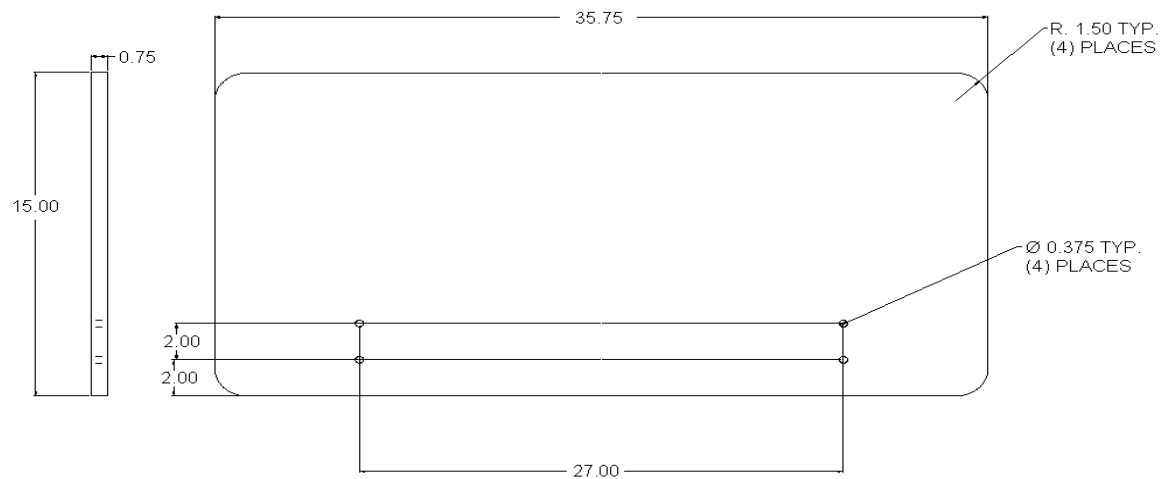
HEAD BOARD

CONTACT MANUFACTURER
BEFORE MAKING SIGNIFICANT
VARIATIONS TO DIMENSIONS



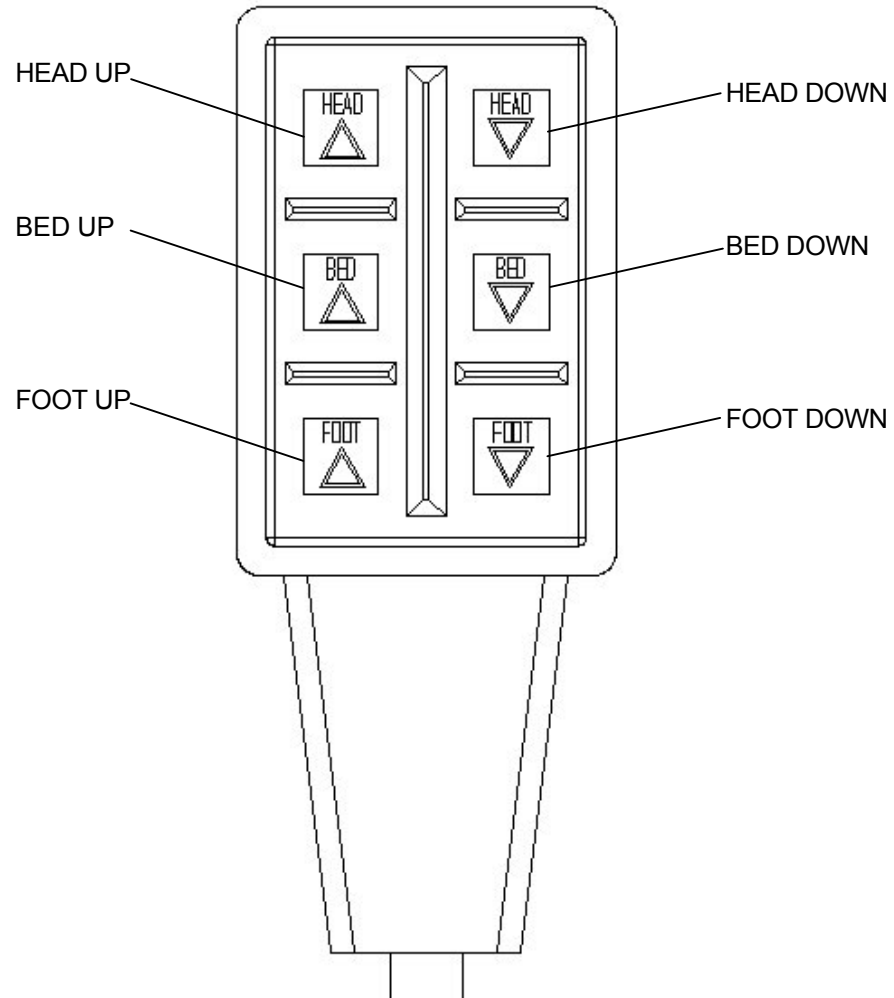
FOOT BOARD

CONTACT MANUFACTURER
BEFORE MAKING SIGNIFICANT
VARIATIONS TO DIMENSIONS



FEATURES

- **PATIENT CONTROLS:** Each bed is equipped with a pendant type hand control as standard equipment. Each control function (head, knee, and bed) has two clearly identifiable switches for up and down travel. The controls are designed to prevent damage to the motor in the event that both the up and down functions are activated simultaneously.



- **IV/Fracture Frame Receptacle:** There are two IV sockets located at the seat section.

ELECTRICAL SPECIFICATIONS:

115 VOLT HIGH/LOW MOTOR:

- 4.0 Amps maximum
- 115 Volts AC, 60 cycles
- Automatic thermal protection
- 1/10 H.P.
- Gear Ratio 19:1
- Permanently lubricated internally
- Instant reversing

115 VOLT HEAD/FOOT MOTOR:

- 4.0 Amps maximum
- 115 Volts AC, 60 cycles
- Automatic thermal protection
- 1/10 H.P.
- Gear Ratio 19:1
- Permanently lubricated internally
- Instant reversing

220 VOLT HIGH/LOW MOTOR:

- 4.0 Amps maximum
- 220 Volts AC, 60 cycles
- Automatic thermal protection
- 1/10 H.P.
- Gear Ratio 19:1
- Permanently lubricated internally
- Instant reversing

220 VOLT HEAD/FOOT MOTOR:

- 4.0 Amps maximum
- 220 Volts AC, 60 cycles
- Automatic thermal protection
- 1/10 H.P.
- Gear Ratio 19:1
- Permanently lubricated internally
- Instant reversing

PRINTED CIRCUIT BOARDS: All circuit boards are tested by the board manufacturer, and by B.A.M.P. assembly department prior to shipping.

ELECTRICAL CORD AND PLUG: Hospital grade, U.L./C.S.A. listed. The cord is #16 AWG 3 conductor type SJT. The cord extends 92" from the end of the bed.

MATERIALS/CONSTRUCTION SPECIFICATIONS:

Base Frame: Welded tubular construction.

Main Frame: 10 Ga. (.135) high strength, low alloy steel (Roll formed).

Sleeping Surface 11 Ga. (.120), cold rolled steel (Roll formed).

Spring Fabric: Steel wire and steel coil spring assembly.

Springs: (12 Ga. coil)

Fabric: (080 dia.) doubled up wire, Approx. 2 x 4 spacing

Load Limits: 450# Evenly Distributed.

BED FINISH SPECIFICATIONS:

All finished parts are thoroughly cleaned in a five-stage wash before powder coating.

- **Stage 1:** Alkaline bath to clean grease and oil off of steel, aluminum, zinc, copper, and brass in spray washing machines.
- **Stage 2:** Fresh water rinse
- **Stage 3:** Iron phosphate conversion coating used for pre-paint treatment for ferrous metals.
- **Stage 4:** Cold water rinse
- **Stage 5:** Chem. Seal 3610, additional corrosive protection used to remove unreacted phosphate salts leaving surface ready to paint.

All parts are then coated with a taupe colored epoxy powder and baked 35 minutes at 375 degrees. The powder coating finish is to be approximately 2.5 mils thick. The coating will be a smooth, uniform finish without runs, wrinkles, or grit.

GENERAL SPECIFICATIONS:

DRIVE UNITS: There are 3 individual motors to operate the head, knee, and high/low functions. The motors have a plug in type connector to allow for easy removal in the event of a motor problem. The motors will be overload protected, with an automatic thermal reset.

FINAL ASSEMBLY AND TESTING: The bed is to be fully assembled and tested at the manufacturing facility before shipping. The only necessary assembly by the customer will be attachment of the head and footboards to the bed frame; all other components will be attached. All beds will be completely tested for proper operation. The bed will be tested for insulation and leakage current. The testing results for each bed will be recorded and kept on file at the manufacturing facility for proof that the bed has been tested and is operating properly at the time of shipment.

SECTION TWO

ASSEMBLY PRINTS/BILL OF MATERIALS

SLEEPING SURFACE ASSEMBLY

ITEM	QTY 76"	PART NUMBER	DESCRIPTION	PART NUMBER	QTY 80"	QTY 84"
18	4	806-0277-008	SELF WRENCHING NUT - BIG	806-0277-008	4	4
17	6	100-2500-002	NON-SKID TAPE 1" x 8" (NOT SHOWN)	100-2500-002	6	6
16*	24	100-7425-006	¼ x .250 GRIP AL RIVET & MANDREL	100-7425-006	24	24
15*	1	999-0644-013T	PAN, SEAT SECTION – TAUPE	999-0644-013T	1	1
14*	1	999-0644-012T	PAN, THIGH SECTION – TAUPE	999-0644-012T	1	1
13*‡‡	-	-	PAN, HEAD SECTION - TAUPE	999-0644-011T	1	1
12*‡	2	999-0644-010T	PAN, FOOT/HEAD SECTION – TAUPE	999-0644-010T	1	1
11	1	999-0633-940T	WELDMENT KNEE SECTION - TAUPE	999-0633-940T	1	1
10	1	999-0633-930T	WELDMENT, FOOT WING	999-0633-930T	1	1
9**	1	999-0633-925T	WELDMENT, HEAD WING – TAUPE	999-0633-920T	1	1
8	1	999-0633-054T	MATTRESS STOP – TAUPE	999-0633-054T	1	1
7	2	999-0633-048T	STRAP, FOOT END LEVELER – TAUPE	999-0633-048T	2	2
6†	1	999-0098-001	SPRING FABRIC	999-0032-059	1	1***
5†	68	999-0032-057	SIDE HELICAL – 10 COIL	999-0032-057	72	76
4	6	999-0032-010	SELF WRENCHING NUT - SMALL	999-0032-010	6	6
3†	12	806-0015-002	HELICAL SPRING – 22 TURN	806-0015-002	12	12
2	10	100-5431-002	5/16-18 X .375" HWHMS – ZINC	100-5431-002	10	10
1	4	100-4618-001	.125 X 1.00 X .812 CAP – BLACK	100-4618-001	4	4

PART NUMBER AND/OR QUANTITIES IN BOLD PRINT MAY BE DIFFERENT BETWEEN 80" AND 76" BEDS

*** ITEMS 12 – 16 USED ON PAN FABRIC BED INSTEAD OF ITEMS 3, 5, AND 6.**

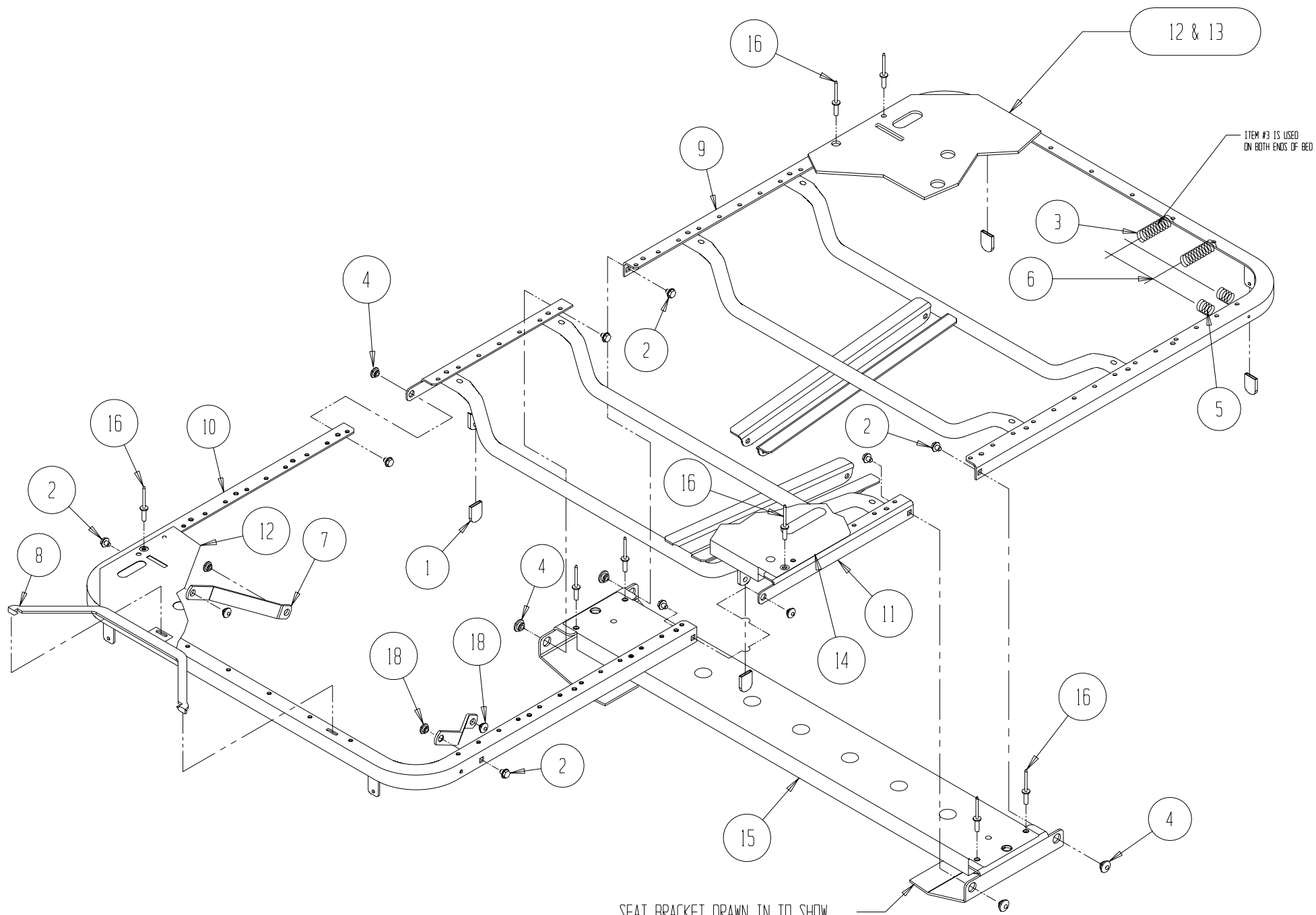
**** 84" PART NUMBER – 999-0633-924T.**

***** 84" SPRING FABRIC USES 80" SPRING FABRIC PLUS 4" ADDED DURING ASSEMBLY.**

† ITEMS 3,5,6 ARE USED ON SPRING FABRIC BEDS INSTEAD OF ITEMS 12 – 16.

‡ ON 80" AND 84" PAN FABRIC BEDS ITEM 12 IS USED ONLY FOR FOOT SECTION PAN.

‡‡ ITEM 13 (84" PAN HEAD SECTION – TAUPE PART NUMBER – 999-0644-014T.) IS FOR HEAD SECTION PAN.

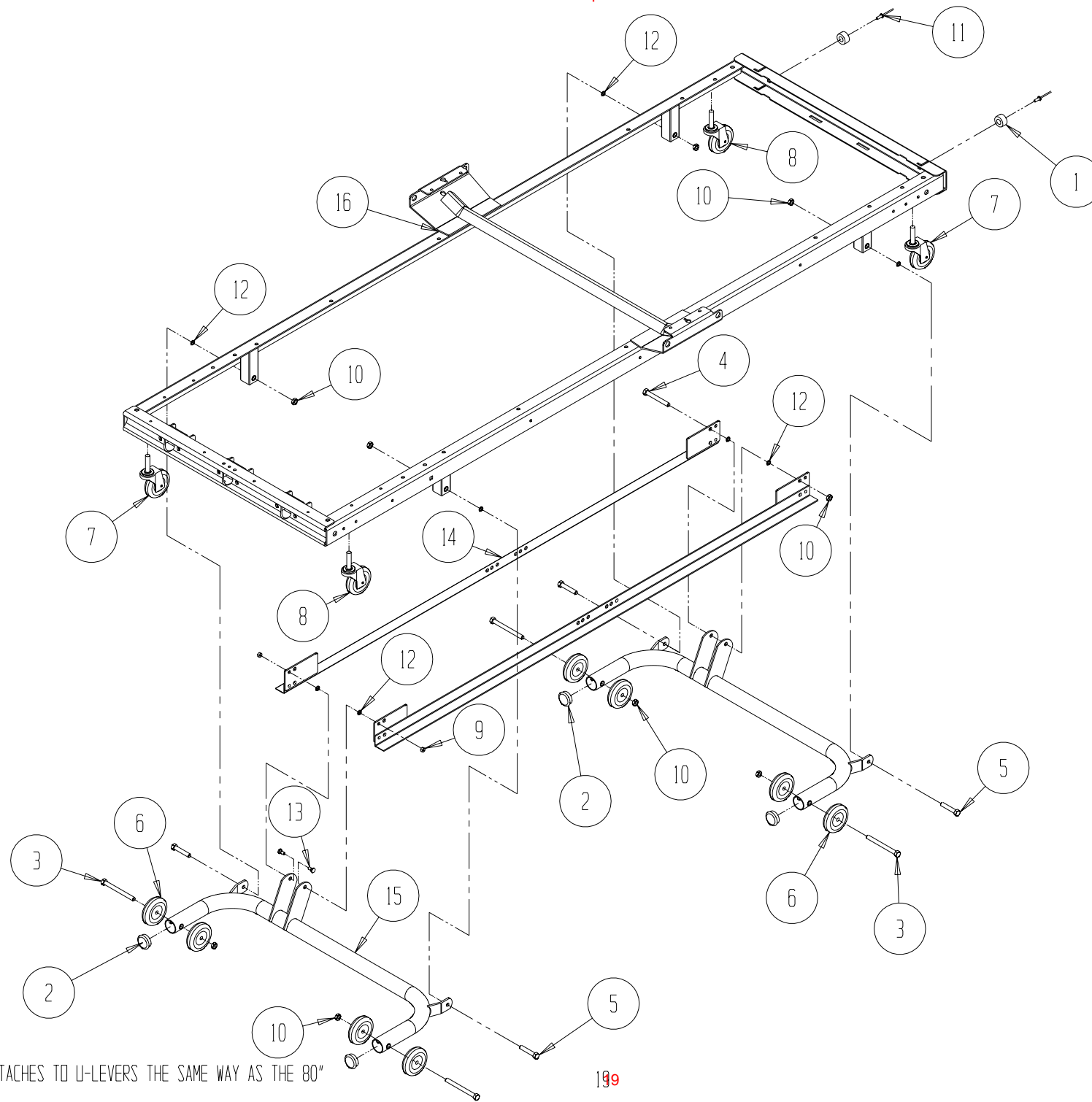


SEAT BRACKET DRAWN IN TO SHOW
HOW SLEEPING SURFACE IS ATTACHED
TO MAIN FRAME.

FRAME AND LIFT ASSEMBLY

ITEM	QTY 76"	PART NUMBER	DESCRIPTION	PART NUMBER	QTY 80"
16	1	999-0638-915T	WELDMENT, FRAME – TAUPE	999-0634-905T	1
15	2	999-0634-903T	WELDMENT, U-LEVER – LOMAX	999-0634-903T	2
14	2	999-0634-904T	WELDMENT, DRAG LINK – LOMAX	999-0634-904T	2
13	2	999-0633-100	SHOULDER BOLT	999-0633-100	2
12	8	100-8410-004	.625 OD x .4371 ID x .093 THICK WASHER	100-8410-004	8
11	2	100-7419-011	3/16 DIAMETER STEEL POP RIVET	100-7419-011	2
10	9	100-6738-003	3/8 – 16 NYLOCK JAM LOCKNUT	100-6738-003	9
9	2	100-6731-006	5/16 – 18 NYLON LOCKNUT THIN (.25)	100-6731-006	2
8	2	*	NON-LOCKING CASTERS, 3.00" DIA.	100-6325-002	2
7	2	*	LOCKING CASTERS, 3.00" DIA.	100-6325-001	2
6	8	100-6325-003	RUBBER WHEELS 2.50" DIA	100-6325-003	8
5	4	100-5438-027	3/8 – 16 x 2.00 HHCS	100-5438-027	4
4	1	100-5438-024	3/8 – 16 x 3.00 HHM SCREW	100-5438-024	1
3	4	100-5438-020	3/8 – 16 x 4.00" HHM SCREWS	100-5438-020	4
2	4	100-4715-002	END CAP – 1.5" OD 14 GA. BLACK	100-4715-002	4
1	2	100-4515-001	BUMPER – DELTA FLEX, PD	100-4515-001	2

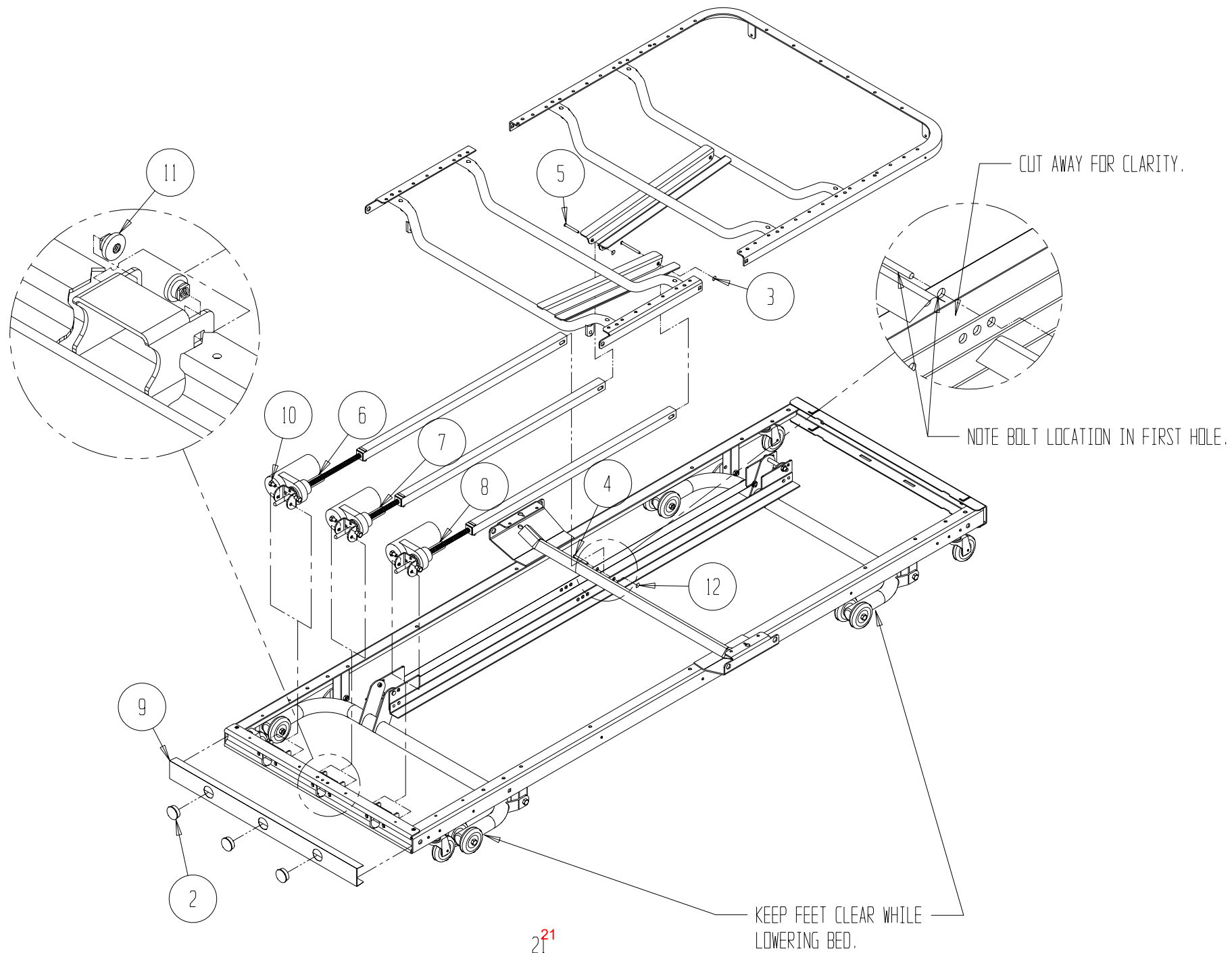
* - (999-0301-904) caster bag contains 2 locking and 2 non-locking casters



NOTE:
1. 76" FRAME ATTACHES TO U-LEVERS THE SAME WAY AS THE 80"
FRAME SHOWN.

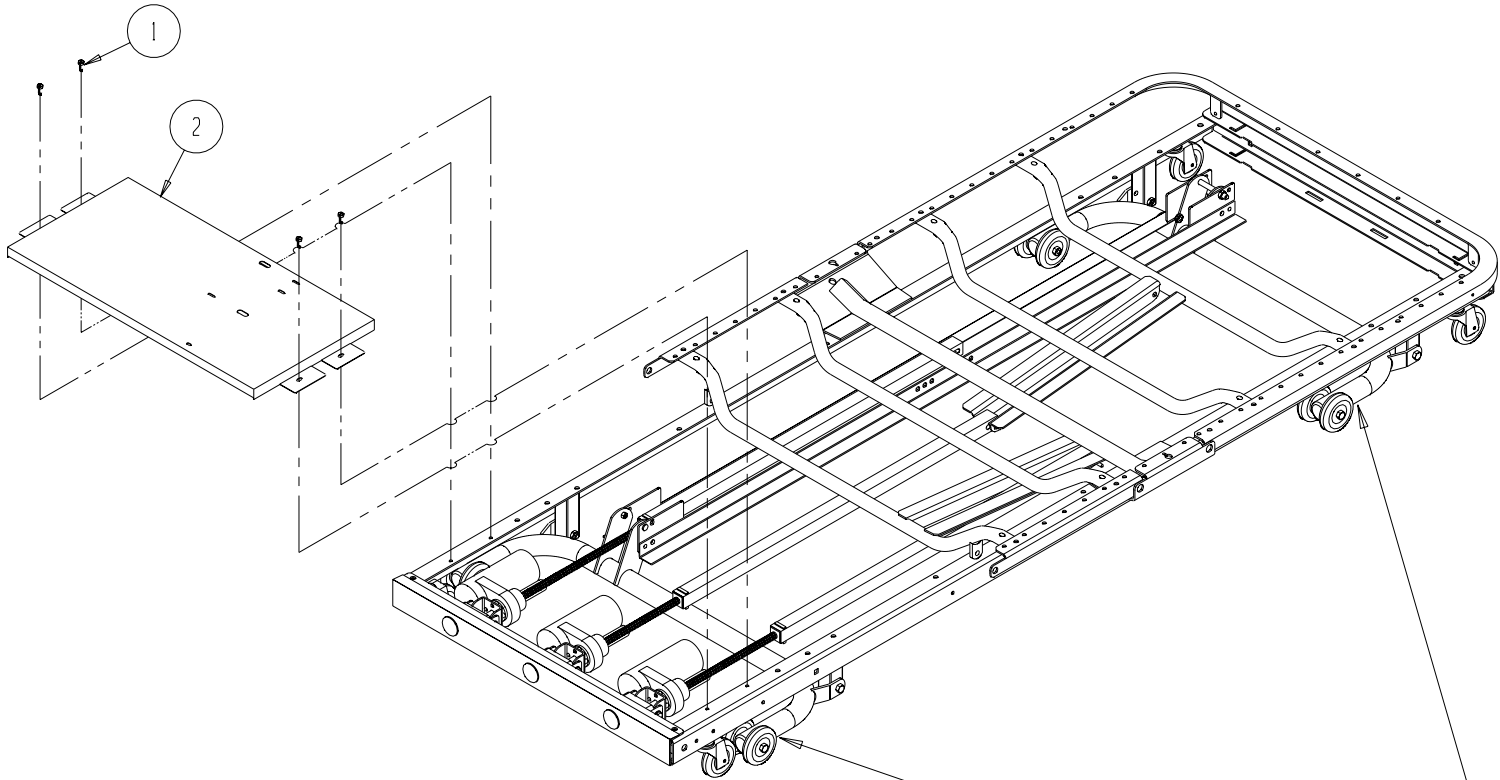
ELECTRIC DRIVE PACK/MAINFRAME ASSEMBLY

ITEM	QTY	PART NUMBER	DESCRIPTION
12	1	100-6738-003	3/8-16 NYLOCK JAM LOCKNUT
11	6	999-0032-010	SELF WRENCHING NUT
10	6	100-5431-002	5/16-18 x .375" HWHMS – ZINC
9	1	999-0651-099	NAME PLATE – COMMONIZED
8	1	SEE PAGE 26 & 27	ACTUATOR FOOT ASSEMBLY
7	1	SEE PAGE 26 & 27	ACTUATOR HEAD ASSEMBLY
6	1	SEE PAGE 26 & 27	ACTUATOR HI/LO ASSEMBLY
5	2	100-7938-009	CLEVIS PIN .375 x 2.25 ZINC
4	1	100-5438-024	3/8-16 x 3.0" HHCS
3	2	100-7518-001	CIRCLE COTTER – 7/16 – ½ SHAFT
2	3	100-4713-002	HEYCO 1.375 DIA. HOLE PLUG – BLACK
1	6	100-1100-018	CABLE TIE #84-1-0811 (NOT SHOWN)



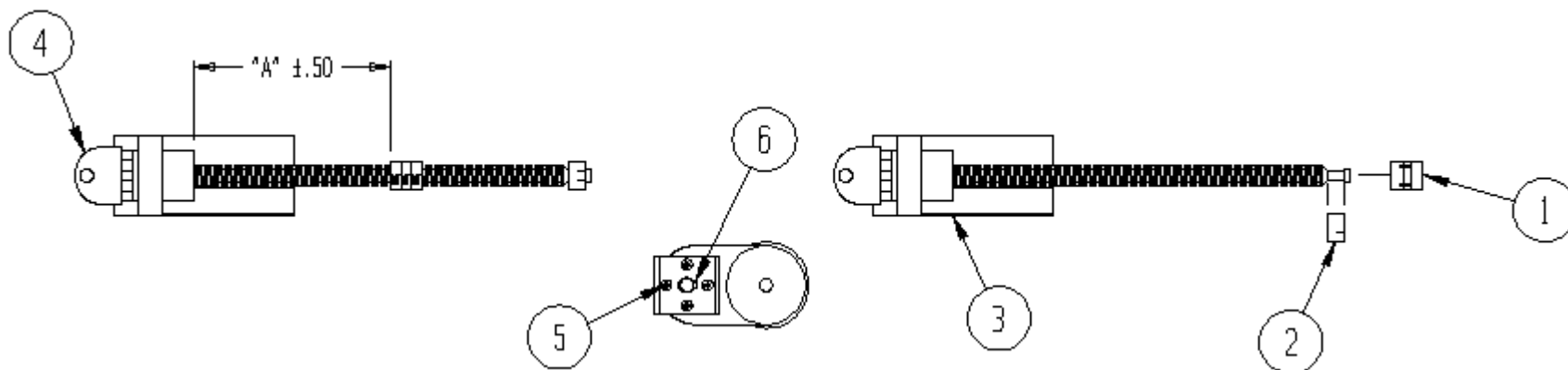
ELECTRIC MOTOR COVER/MAINFRAME ASSEMBLY

ITEM	QTY	PART NUMBER	DESCRIPTION
2	1	999-0651-950T	ASSEMBLY, MOTOR COVER – TAUPE
1	4	100-5425-087	¼ - 20 x .500 HH TYPE 23 EXTSEMS



KEEP FEET CLEAR WHILE
LOWERING BED.

LOMAX MOTOR SETTINGS



**NOTE: DIMENSION "A" REPRESENTS:
HEAD MOTOR – TOTALLY RETRACTED.
FOOT MOTOR – TOTALLY EXTENDED.
HI/LO MOTOR – TOTALLY EXTENDED.**

ITEM	QTY	PART NUMBER	DESCRIPTION
6	1	100-7718-005	.188 x .750 ROLL PIN (P01747-0002 VW PN)
5	4	R12023-0002	¼ x ½" SELF TAPPING SCREW
4	1	999-0651-015P	BRACKET, MOTOR MNTG.
3	1	Hd, Ft, Hi-Lo	MOTOR AND THREADED ROD
2	1	999-0301-007	STOP CLIP
1	1	999-0032-090	MAIN NUT – RH

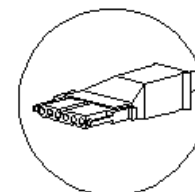
TABLE 1 (NUT DIMENSION) BEDS PRODUCED BEFORE JAN. 2004

115 VOLT PN	220 VOLT PN	DESCRIPTION	DIMENSION "A"
999-0651-952	999-0670-952	HEAD ACTUATOR	5.75"
999-0651-953	999-0670-953	FOOT ACTUATOR	7.75"
999-0651-955	999-0670-955	HI/LO ACTUATOR	10.625"

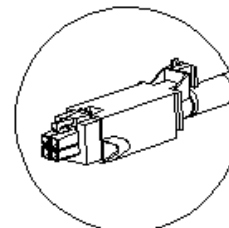
TABLE 1 (NUT DIMENSION) BEDS PRODUCED AFTER JAN. 2004

115 VOLT PN	220 VOLT PN	DESCRIPTION	DIMENSION "A"
999-0700-902	999-0752-902	HEAD ACTUATOR	5.75"
999-0700-903	999-0752-903	FOOT ACTUATOR	7.75"
999-0700-905	999-0752-905	HI/LO ACTUATOR	10.625"

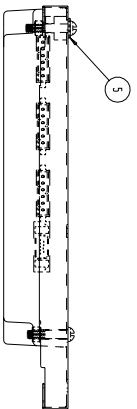
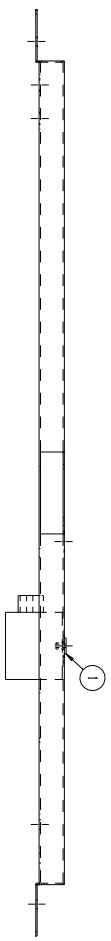
**BEDS PRODUCED BEFORE JAN. 2004
HAVE BURNDY BLACK FLAT MOTOR
PLUGS**



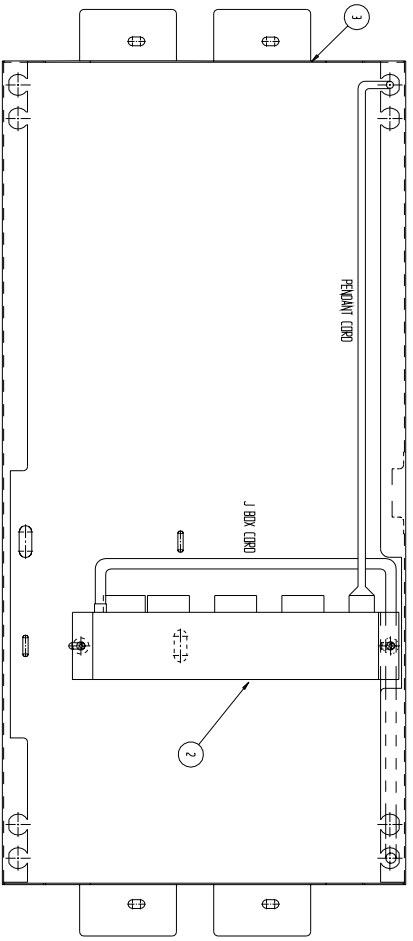
**BEDS PRODUCED AFTER JAN. 2004
HAVE MOLEX WHITE SQUARE
MOTOR PLUGS**



PREVIOUS MOTOR COVER ASSEMBLY BEFORE JAN. 2004



FLAT BURNDY MOTOR CONNECTORS

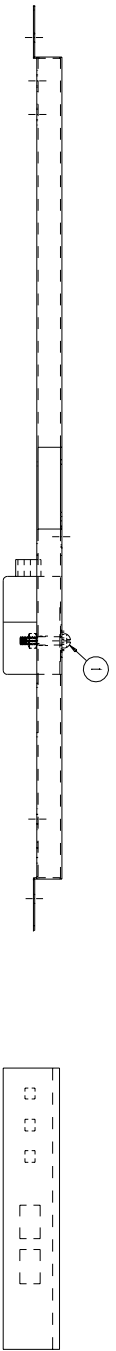


PARTS LIST

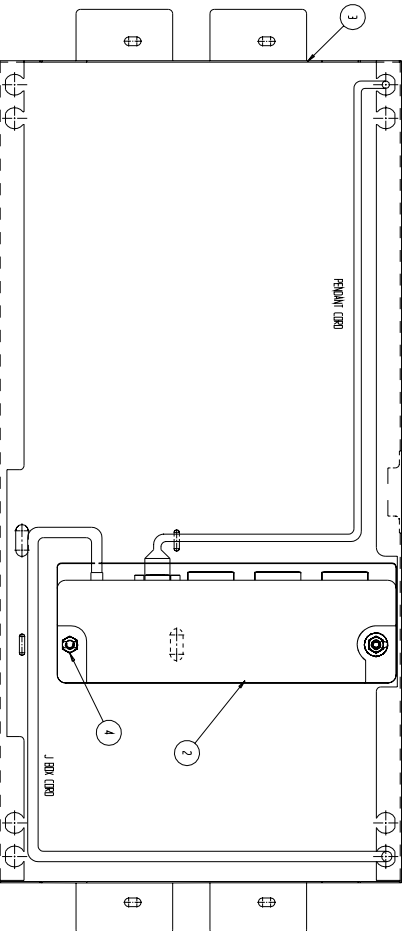
ITEM	QTY	PART NUMBER	DESCRIPTION
7*	1	999-0337-005	HAND CONTROL 6 BUTTON (NOT SHOWN)
6	1	999-0150-199	PANEL MT PEND HOLDER (NOT SHOWN)
5	1	999-0150-021	CAUTION LABEL (NOT SHOWN)
4	2	100-1138-001	STRAIN RELIEF PLUG (NOT SHOWN)
3	1	999-0651-050T	COVER, LOW VOLTAGE
2**	1	999-0530-003	JUNCTION BOX
1	2	100-7419-011	3/16 DIAMETER PDP RIVET

* FOUR BUTTON PENDANT FOR SEMI ELECTRIC BED PART # IS 999-0530-050.
 ** 1. 220 VOLT JUNCTION BOX PART # IS 999-0627-063 W/OUT PLUG AND 999-0627-063P W/PLUG.
 (THE PLUG IS ONLY SUPPLIED FOR PROBERS OF A SIGNIFICANT AMOUNT AND ALSO DEPENDS ON WHAT COUNTRY THE BED IS TO BE DELIVERED TO.)

NEW MOTOR COVER ASSEMBLY AFTER JAN. 2004



WHITE MOLEX SQUARE MOTOR CONNECTORS



999-0700-930T PARTS LIST

ITEM	QTY	PART NUMBER	DESCRIPTION	ITEM	QTY	PART NUMBER	DESCRIPTION	ITEM	QTY	PART NUMBER	DESCRIPTION
9	1	999-0700-305	6 FUNCTION PENDANT	9	1	999-0700-355	6 FUNCTION PENDANT W/PUL	9	1	999-0700-205	4 FUNCTION PENDANT
8	1	999-0700-199	PENDANT HOLDER 700	8	1	999-0700-199	PENDANT HOLDER 700	8	1	999-0700-199	PENDANT HOLDER 700
7	1	999-0150-021	CAUTION LABEL (NOT SHOWN)	7	1	999-0150-021	CAUTION LABEL (NOT SHOWN)	7	1	999-0150-021	CAUTION LABEL (NOT SHOWN)
6	1	100-1100-038	STRAIN RELIEF PLUG (NOT SHOWN)	6	1	100-1100-038	STRAIN RELIEF PLUG (NOT SHOWN)	6	1	100-1100-038	STRAIN RELIEF PLUG (NOT SHOWN)
5	1	100-8610-003	LOCKWASHER SHAKERPD	5	1	100-8610-003	10-32 LOCKWASHER SHAKERPD	5	1	100-8610-003	10-32 LOCKWASHER SHAKERPD
4	2	100-6710-001	10-32 NYLOCK NUT	4	2	100-6710-001	10-32 NYLOCK NUT	4	2	100-6710-001	10-32 NYLOCK NUT
3	1	999-0651-050T	COVER, LOW VOLTAGE	3	1	999-0651-050T	COVER, LOW VOLTAGE	3	1	999-0651-050T	COVER, LOW VLTAGE
2	1	999-0700-300	6 FUN. J-BOX 2601	2	1	999-0700-300	6 FUNCTION JUNCTION BOX	2	1	999-0700-300	6 FUNCTION JUNCTION BOX
1	2	100-5410-001	1.5" LONG 10-32 PHILLIPS HEAD	1	2	100-5410-001	1.5" LONG 10-32 PHILLIPS HEAD	1	2	100-5410-001	1.5" LONG 10-32 PHILLIPS HEAD

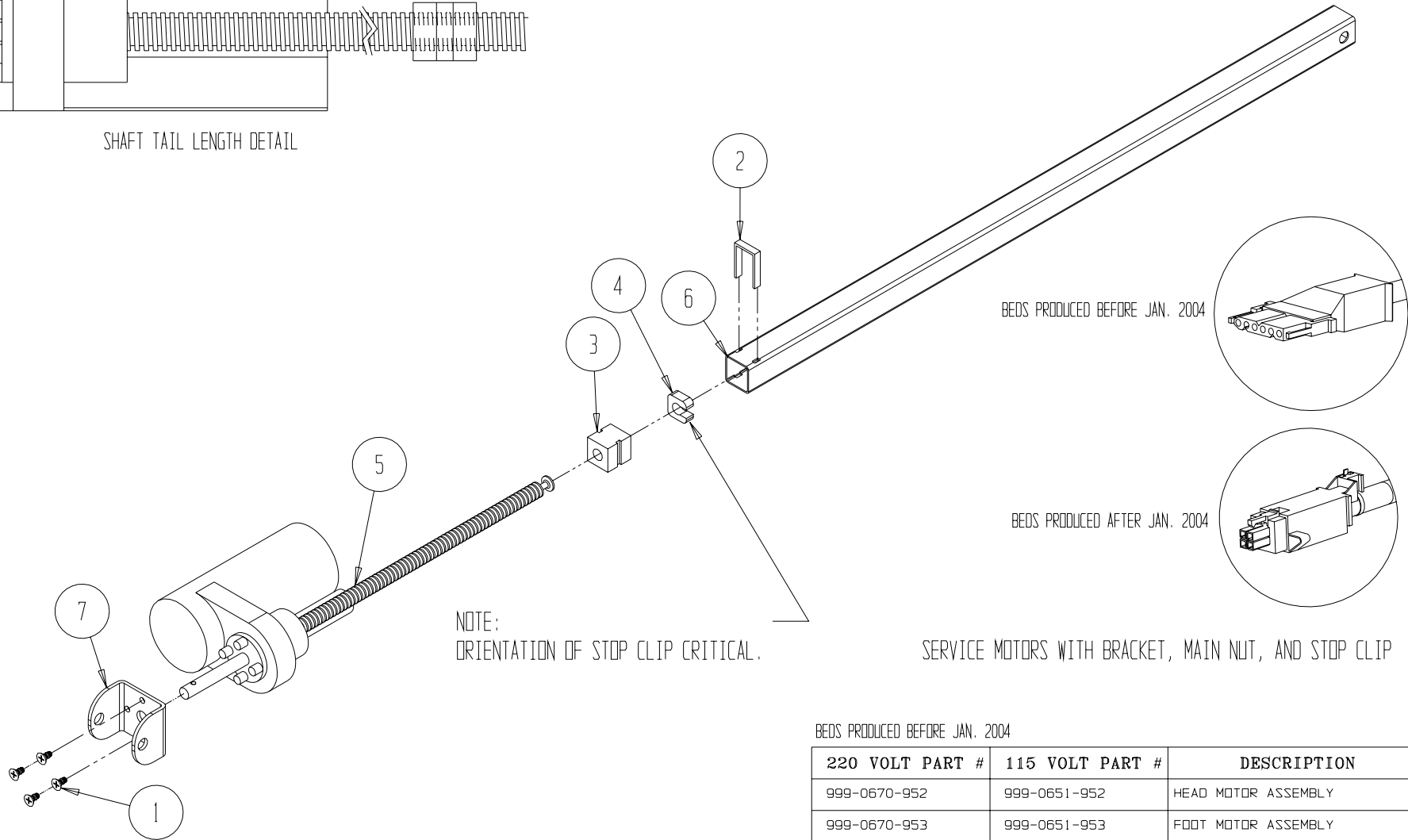
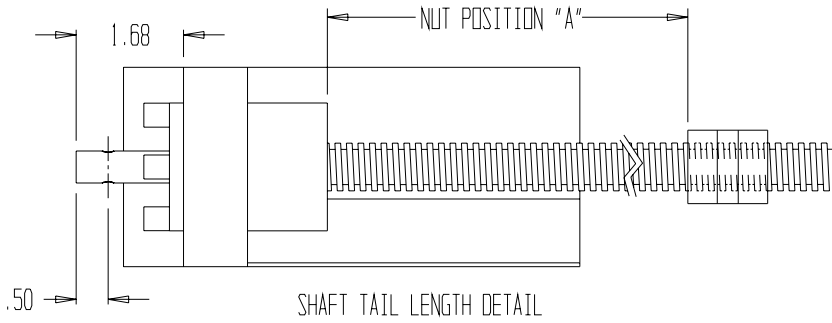
999-0700-935T PARTS LIST

999-0700-920T PARTS LIST

MOTOR ASSEMBLY

ITEM	QTY *	PART NUMBER	DESCRIPTION
7	1	999-0651-015P	BRACKET, MOTOR MOUNTING – PLATED
6	1	999-0651-010T	TORQUE TUBE, ELECTRIC – TAUPE
5	1	See chart on figure	MOTOR
4	1	999-0301-007	STOP CLIP
3	1	999-0032-090	MAIN NUT – RH
2	1	999-0032-062	RETAINER – NUT
1	4	100-5425-005	¼ -20 x .50” PRHMS – ZINC

*QTY ARE PER MOTOR



NUT POSITION "A"

BED	HI/LO MOTOR	HEAD MOTOR	FOOT MOTOR
L0MAX	10.625"	5.75"	7.75"

BEDS PRODUCED BEFORE JAN. 2004

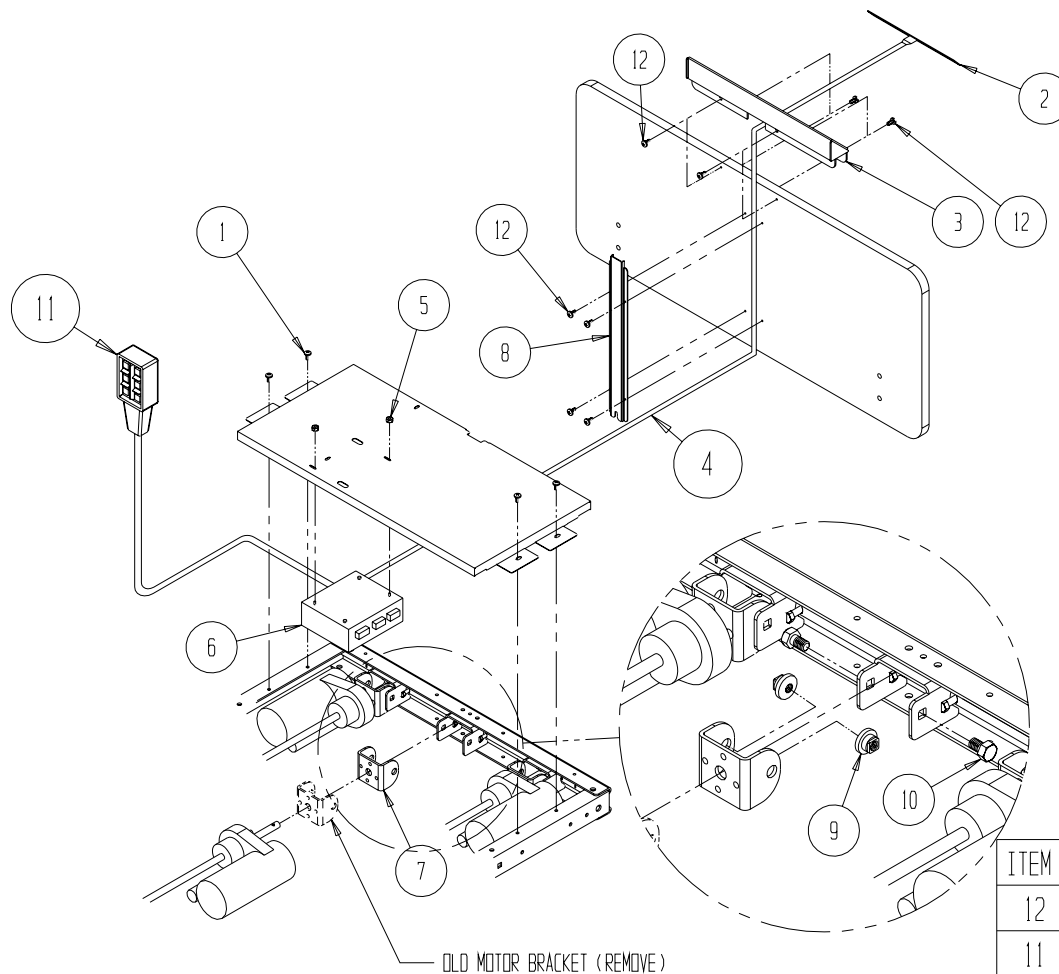
220 VOLT PART #	115 VOLT PART #	DESCRIPTION
999-0670-952	999-0651-952	HEAD MOTOR ASSEMBLY
999-0670-953	999-0651-953	FOOT MOTOR ASSEMBLY
999-0670-955	999-0651-955	HI/LO MOTOR ASSEMBLY

BEDS PRODUCED AFTER JAN. 2004

220 VOLT PART #	115 VOLT PART #	DESCRIPTION
999-0752-902	999-0700-902	HEAD MOTOR ASSEMBLY
999-0752-903	999-0700-903	FOOT MOTOR ASSEMBLY
999-0752-905	999-0700-905	HI/LO MOTOR ASSEMBLY

ASSEMBLY INSTRUCTIONS

ALPHA BOX HIGH MOUNT NURSE CONTROL KIT - GEN. 4



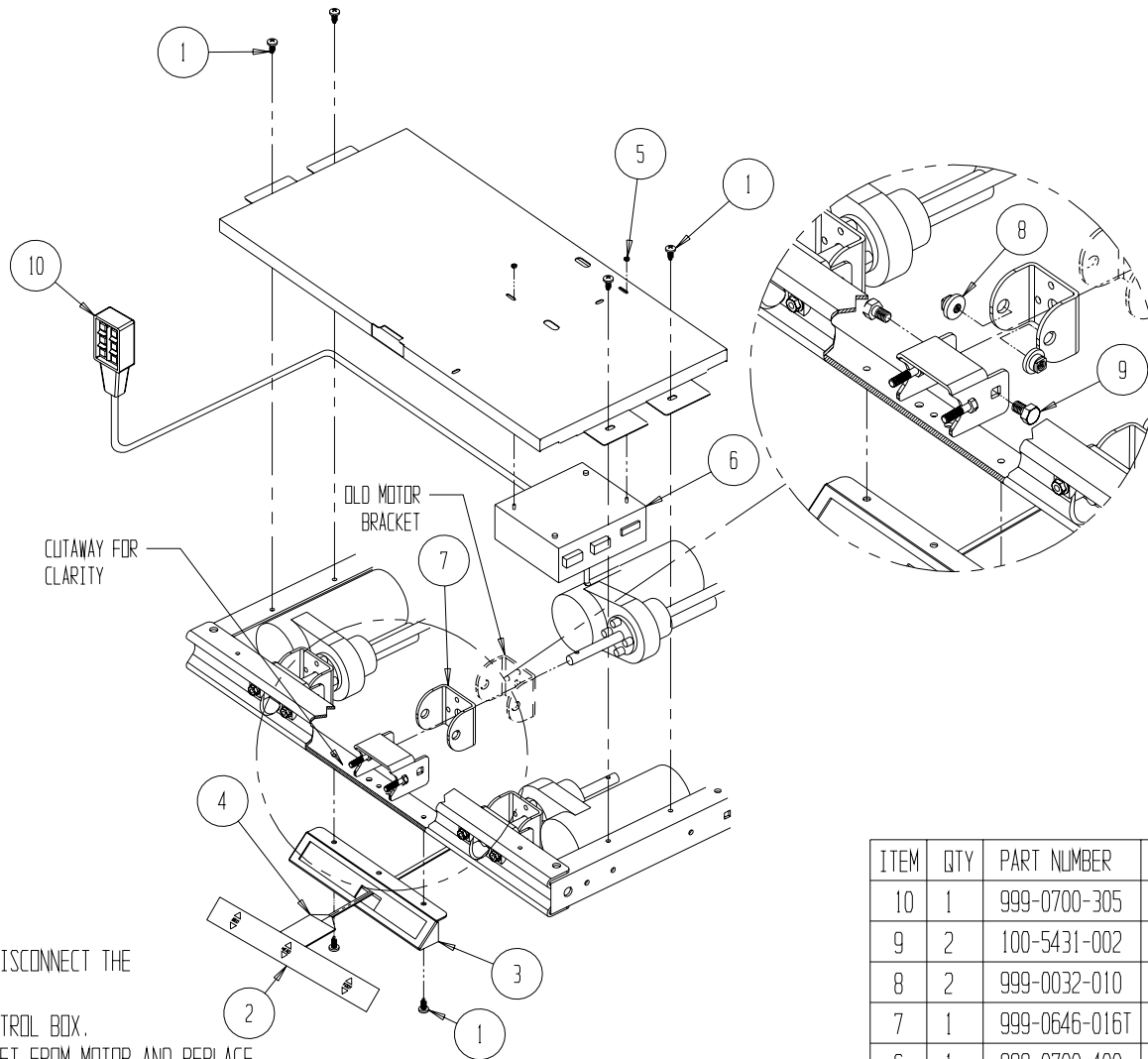
INSTRUCTIONS:

1. UNPLUG THE BED.
2. REMOVE THE MOTOR COVER FROM THE BED AND DISCONNECT THE MOTORS FROM THE OLD J-BOX.
3. REMOVE OLD J-BOX AND ATTACH THE ALPHA BOX.
4. REMOVE HEAD MOTOR, DISCONNECT PLATED MOTOR BRACKET FROM MOTOR, AND REPLACE WITH PAINTED BRACKET. ATTACH WITH NEW MOTOR BRACKET AS SHOWN.
5. RECONNECT THE MOTORS ACCORDING TO LABELS ON J- BOX.
6. REATTACH MOTOR COVER TO FRAME.
7. ATTACH NURSE CONTROL TO FOOTBOARD AS SHOWN.
8. CONNECT NURSE CONTROL SWITCH TO INTERFACE CABLE AS SHOWN ON PAGE 33. CONNECT INTERFACE CABLE TO ALPHA CONTROL BOX.
9. ATTACH THE CHANNEL TO THE FOOT BOARD AS SHOWN.

ITEM	QTY	PART NUMBER	DESCRIPTION
12	8	100-5506-001	# 6 x 1/2 PPHTF - AB - ZI SCREW
11	1	999-0700-305	HAND CONTROL 6 BUTTON
10	2	100-5431-002	5/16-18 X .375" HWHMS-ZINC
9	2	999-0032-010	SELF WRENCHING NUT
8	1	555-0254-012	CHANNEL
7	1	999-0646-016T	BRK'T, HD MOTOR MOUNT - ALPHA BOX
6	1	999-0700-400	CONTROL BOX, ALPHA, 2601
5	2	100-6706-001	#6-32 NYLOCK NUT
4	1	999-0646-070	INTERFACE CABLE - 34" - 18" BOARDS
3	1	555-0254-902	BEZEL WELDMENT
2	1	555-0254-001	NURSE CONTROL SWITCH
1	4	100-5425-087	1/4-20 X .500 PPH TYPE 23 EXTSEMS

ASSEMBLY INSTRUCTIONS

ALPHA BOX LOW MOUNT NURSE CONTROL KIT- GEN. 4



INSTRUCTIONS:

1. UNPLUG THE BED.
2. REMOVE THE MOTOR COVER FROM THE BED AND DISCONNECT THE MOTORS FROM THE OLD J-BOX.
3. REMOVE OLD J-BOX AND ATTACH THE ALPHA CONTROL BOX.
4. REMOVE HEAD MOTOR DISCONNECT PLATED BRACKET FROM MOTOR AND REPLACE WITH PAINTED BRACKET. ATTACH WITH NEW MOTOR BRACKET AS SHOWN.
5. RECONNECT THE MOTORS ACCORDING TO LABELS ON ALPHA CONTROL BOX.
6. REATTACH MOTOR COVER TO FRAME.
7. ATTACH NURSE CONTROL WELDMENT TO FRAME AND CONNECT NURSE CONTROL SWITCH TO INTERFACE CABLE. CONNECT INTERFACE CABLE TO ALPHA CONTROL BOX.

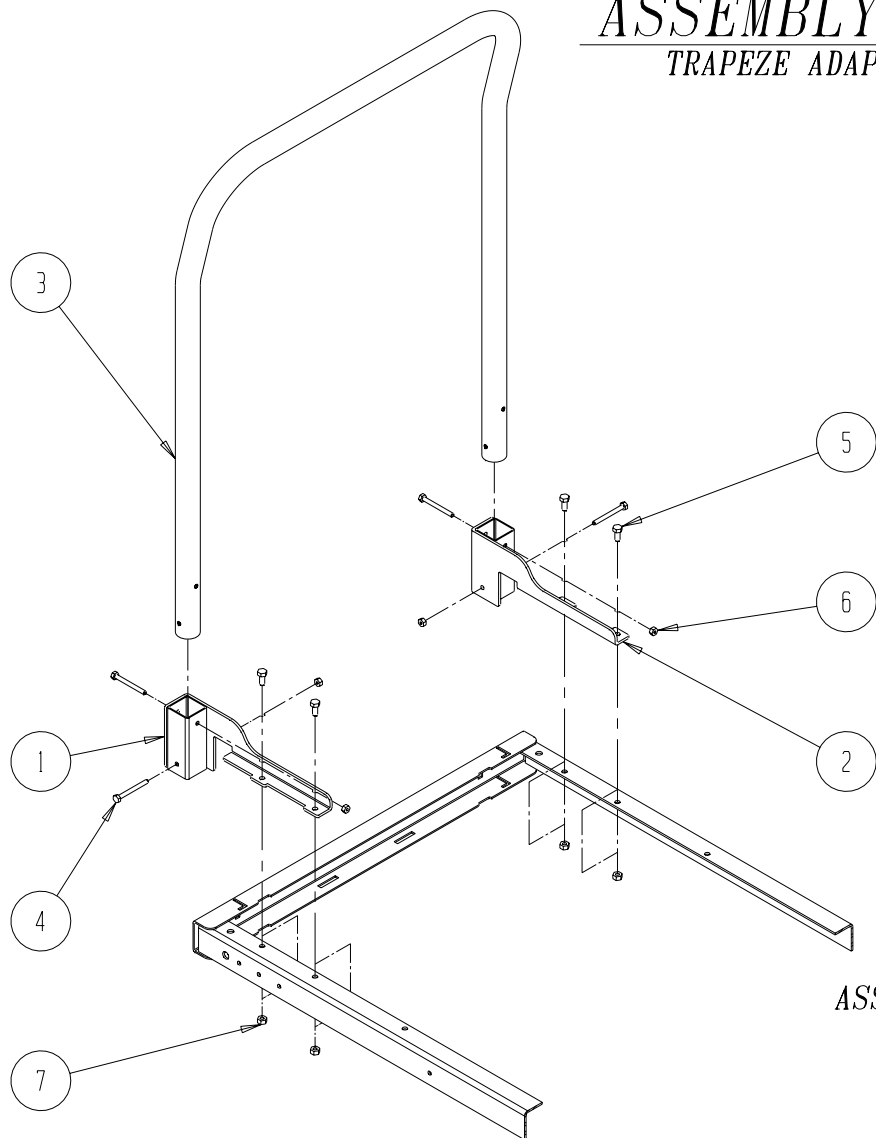
ITEM	QTY	PART NUMBER	DESCRIPTION
10	1	999-0700-305	HAND CONTROL 6 BUTTON
9	2	100-5431-002	5/16-18 X .375" HWHMS-ZINC
8	2	999-0032-010	SELF WRENCHING NUT
7	1	999-0646-016T	BRK'T, HD MOTOR MOUNT - ALPHA BOX
6	1	999-0700-400	CONTROL BOX, ALPHA, 2601
5	2	100-6706-001	#6-32 NYLOCK NUT
4	1	999-0646-070	INTERFACE CABLE - 34" - 18" BOARDS
3	1	555-0354-902	BEZEL WELDMENT
2	1	555-0254-001	NURSE CONTROL SWITCH
1	4	100-5425-087	1/4-20 X .500 PPH TYPE 23 EXTSEMS

SECTION THREE

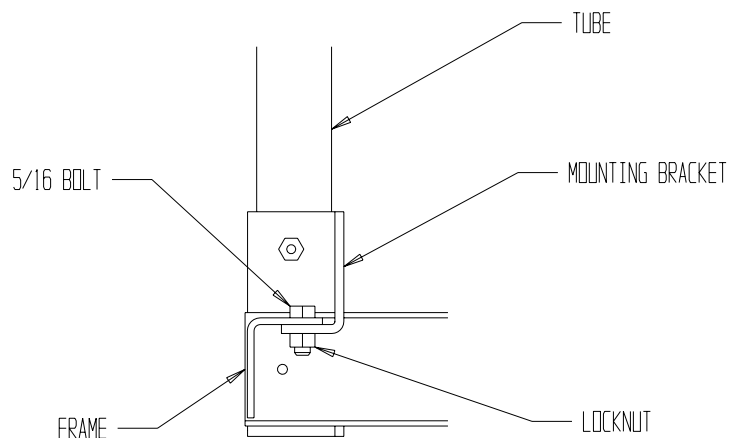
INSTRUCTION SHEETS/AVAILABLE ACCESSORIES

ASSEMBLY INSTRUCTIONS

TRAPEZE ADAPTOR (554-0639-000)



ASSEMBLY DIAGRAM



MOUNTING INSTRUCTIONS

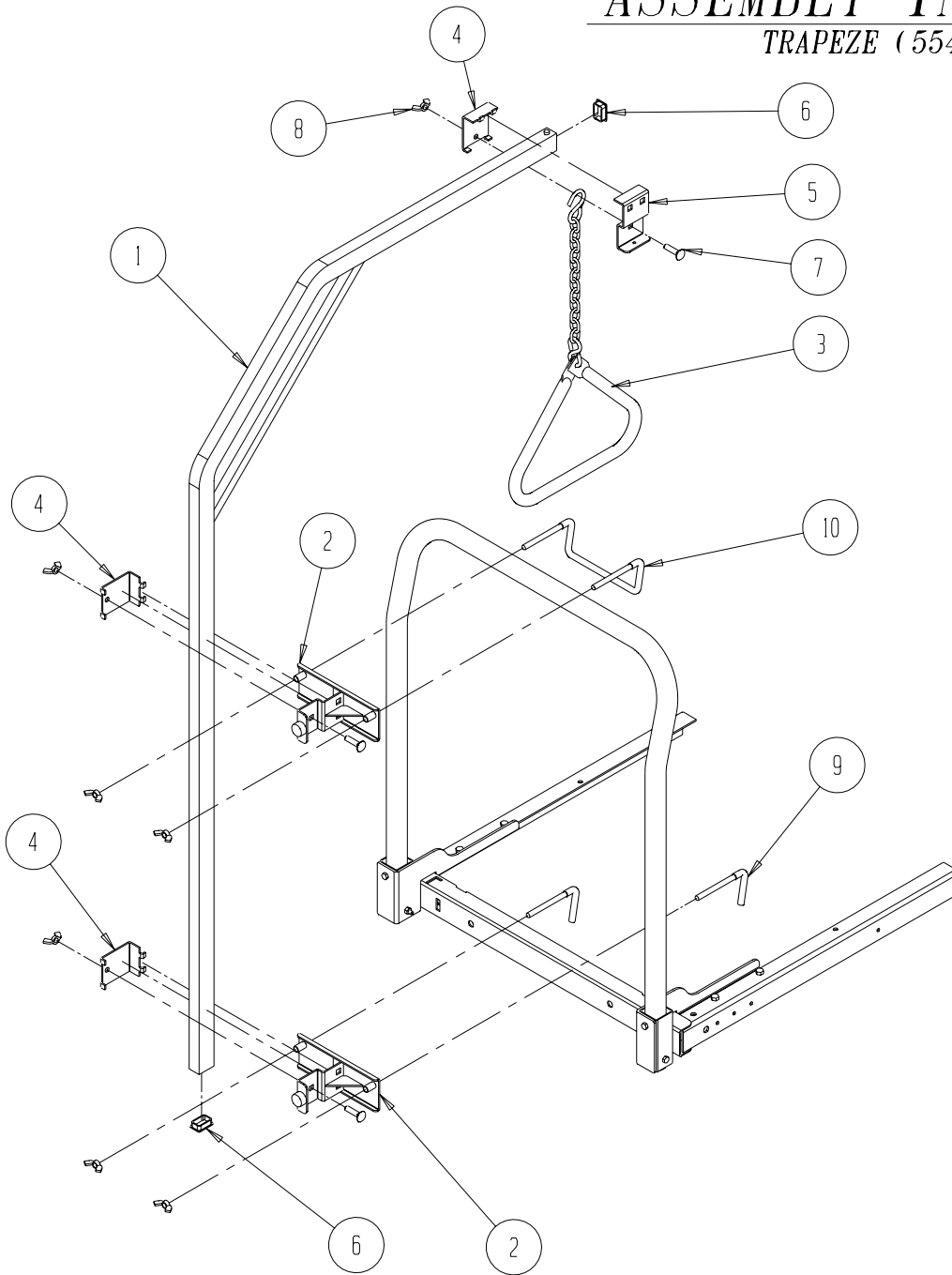
- 1 - ATTACH TUBE (3) TO MOUNTING BRACKETS (1 & 2) WITH THE FOUR 1/4 INCH BOLTS AND MATCHING LOCKNUTS.
- 2 - RAISE THE HEAD OF THE BED TO ITS HIGHEST POSITION.
- 3 - LOWER TRAPEZE ADAPTOR INTO THE FRAME OF THE BED, SO THAT THE FLAPS ON THE MOUNTING BRACKETS ARE UNDER THE FRAME (SEE DIAGRAM).
- 4 - ALIGN THE HOLES ON THE FRAME WITH THE HOLES ON THE MOUNTING BRACKETS, AND ATTACH WITH THE FOUR 5/16 INCH BOLTS AND MATCHING LOCKNUTS.

PARTS LIST

ITEM	QTY	DESCRIPTION	(PART #)
1	1	MOUNTING BRKT-RH	(999-0639-901T)
2	1	MOUNTING BRKT-LH	(999-0639-902T)
3	1	TUBE-30" TRAPEZE	(999-0639-003T)
4	4	1/4-20 X 2.50 HHMS	(100-5425-059)
5	4	5/16-18 X .75 HHMS	(100-5431-008)
6	4	1/4-20 LOCKNUT	(100-6725-002)
7	4	5/16-18 LOCKNUT	(100-6731-002)

ASSEMBLY INSTRUCTIONS

TRAPEZE (554-0143-000)



ASSEMBLY DIAGRAM

MOUNTING INSTRUCTIONS

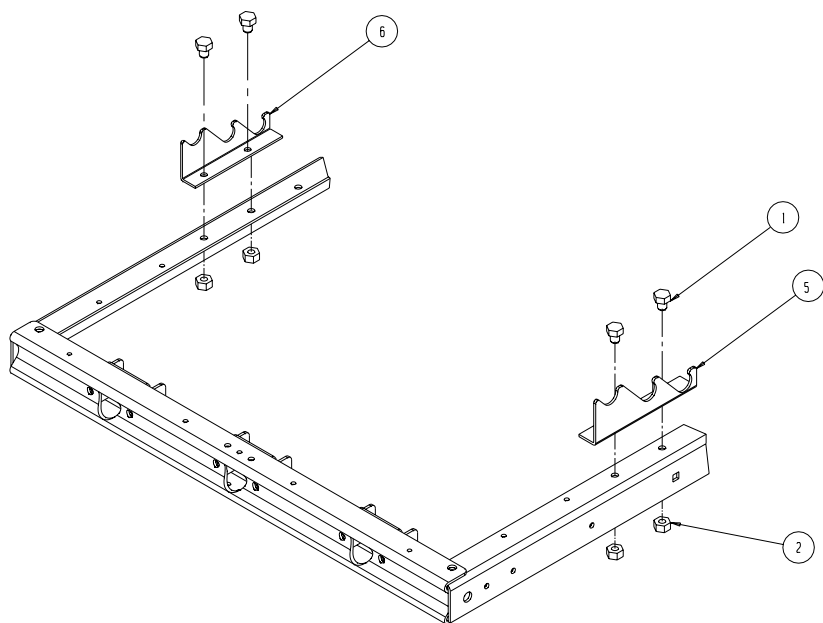
- 1 - ATTACH THE TWO TRAPEZE SUPPORT PLATE ASSEMBLIES (2) TO THE TRAPEZE SUB ASSEMBLY (1) WITH THE TRAPEZE CLAMPS (4), CARRIAGE BOLT (7) AND WING NUT (8). KEEP THE UPPER PLATE LOOSE SO THAT IT CAN BE ADJUSTED TO THE ADAPTER.
- 2 - PUT THE TWO LOWER CLAMP RODS (9) THROUGH THE HOLES ON THE LOWER SUPPORT PLATE ASSEMBLY (2). THEN SET THE CLAMP RODS ONTO THE HEAD END OF THE FRAME. CENTER THE SUPPORT PLATE ASSEMBLY AND TIGHTEN THE CLAMP RODS WITH TWO OF THE WING NUTS (8).
- 3 - PUT THE UPPER CLAMP ROD (10) THROUGH THE UPPER SUPPORT PLATE ASSEMBLY (2). THEN SET THE UPPER CLAMP ROD ON THE MAIN TUBE OF THE TRAPEZE ADAPTER. TIGHTEN THE UPPER CLAMP ROD USING TWO WING NUTS (8). ALSO TIGHTEN THE SUPPORT PLATE ASSEMBLY
- 4 - PUT THE REMAINING MALE AND FEMALE TRAPEZE CLAMPS (4 & 5) ONTO THE TRAPEZE SUB ASSEMBLY (1). TAKE THE REMAINING CARRIAGE BOLT (7) AND PUT IT THROUGH THE FEMALE TRAPEZE CLAMP. THEN PUT IT THROUGH THE HOOK AT THE END OF THE CHAIN ON THE TRIANGLE ASSEMBLY (3) AND FINALLY THROUGH THE MALE TRAPEZE CLAMP (4). THEN TIGHTEN USING THE LAST WING NUT (8).

PARTS LIST

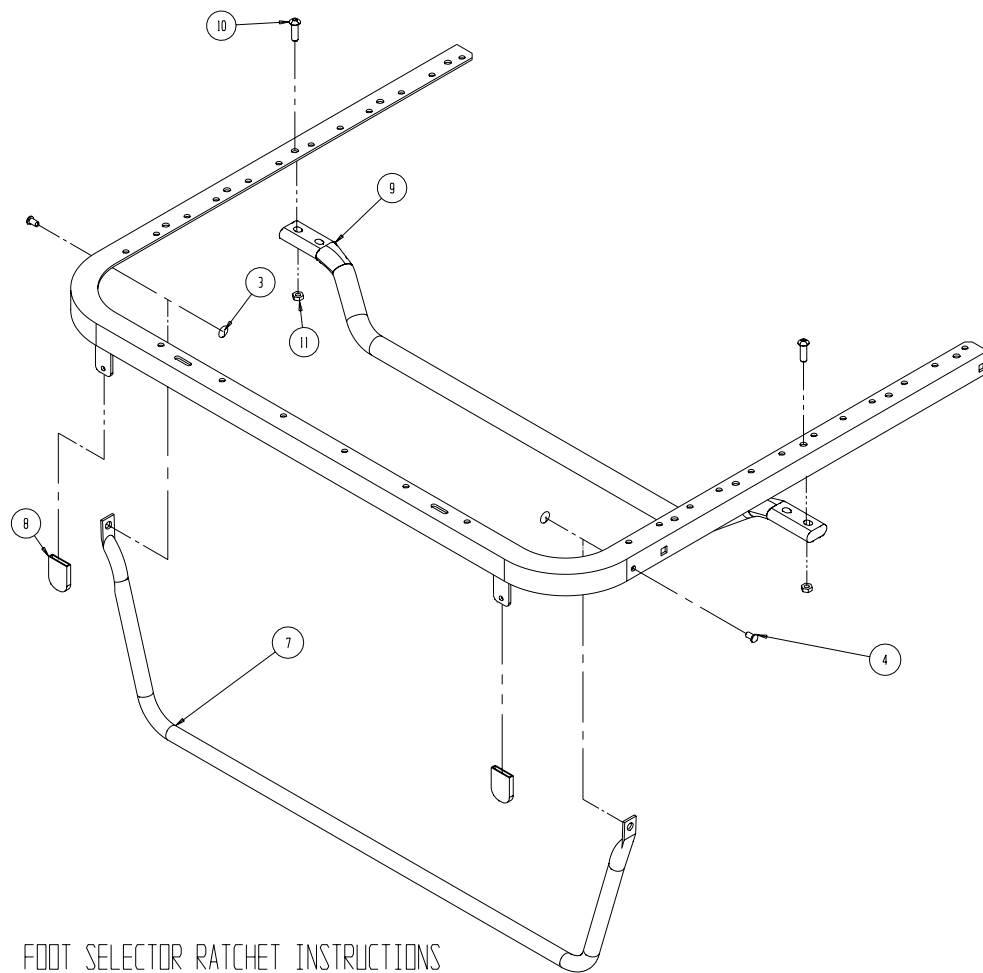
ITEM	QTY	DESCRIPTION	(PART #)
1	1	TRAPEZE SUB ASSEMBLY	(999-0143-901)
2	2	TRAPEZE SUPPORT PLATE ASSY	(999-0143-902)
3	1	TRIANGLE ASSEMBLY	(999-0143-903)
4	3	TRAPEZE CLAMP (MALE)	(999-0143-001)
5	1	TRAPEZE CLAMP (FEMALE)	(999-0143-002)
6	2	END CAP	(794-0001-004)
7	3	3/8-16 X 1.50 CARRIAGE BOLT	(100-5238-001)
8	7	3/8-16 UNC WING NUT	(100-6938-001)
9	2	LOWER TRAPEZE CLAMP ROD	(999-0143-005)
10	1	UPPER TRAPEZE CLAMP ROD	(999-0143-006)

ASSEMBLY INSTRUCTIONS

FOOT SECTION RATCHET KIT, 554-0658-000



ASSEMBLY INSTRUCTIONS FOOT SELECTOR RATCHET



FOOT SELECTOR RATCHET INSTRUCTIONS

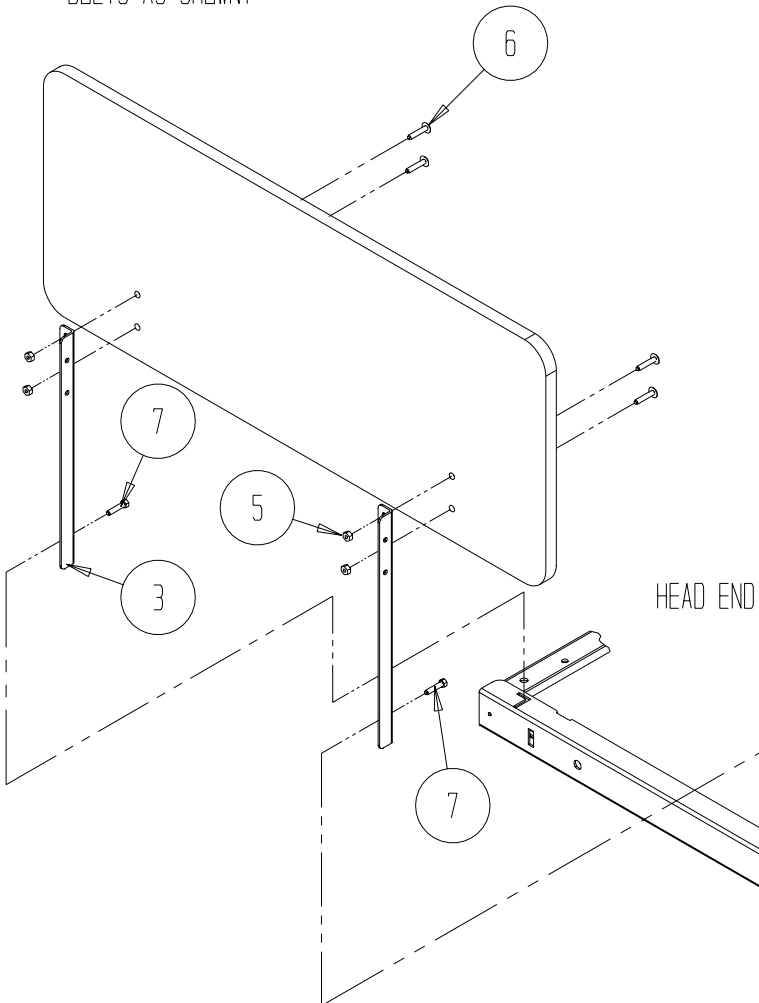
1. ATTACH 999-0658-019T, 020T RH AND LH FOOT RATCHET BRACKETS TO FOOT END OF BED RESPECTIVELY WITH HEX HEAD MACHINE SCREWS AND AND LOCKNUTS AS SHOWN IN DIAGRAM.
2. ATTACH 999-0658-021T TUBE TO FOOT WING OF BED USING CIRCLE COTTERS AND CLEVIS PINS AS SHOWN.
3. ATTACH 999-0633-021T TUBE TO FOOT WING OF BED USING BUTTON CAP SCREW AND LOCKNUTS.

PARTS LIST

ITEM	QTY	PART NUMBER	DESCRIPTION
1	4	100-5431-017	5/16-18 X 5/8 HHMS - ZINC
2	4	100-6731-002	5/16 NYLON LOCKNUT
3	2	100-7518-001	CIRCLE COTTER - 7/16 - 1/2 SHAFT
4	2	100-7925-001	CLEVIS PIN .25 X .5 ZINC
5	1	999-0658-019T	BRACKET, FOOT END RATCHET (LH)
6	1	999-0658-020T	BRACKET, FOOT END RATCHET (RH)
7	1	999-0658-021T	TUBE, FOOT RATCHET SELECT - TAUPE
8	2	100-4618-001	.125 X 1.00 X .812 CAP-BLACK
9	1	999-0633-021T	SLEEPING SURFACE CROSS BRACE
10	2	100-5431-016	5/16-18 1.25 BUTTON HEAD CAP SCREW
11	2	100-6731-006	5/16-18 NYLON LOCKNUT THIN (.25)

HEAD AND FOOT BOARD INSTRUCTIONS

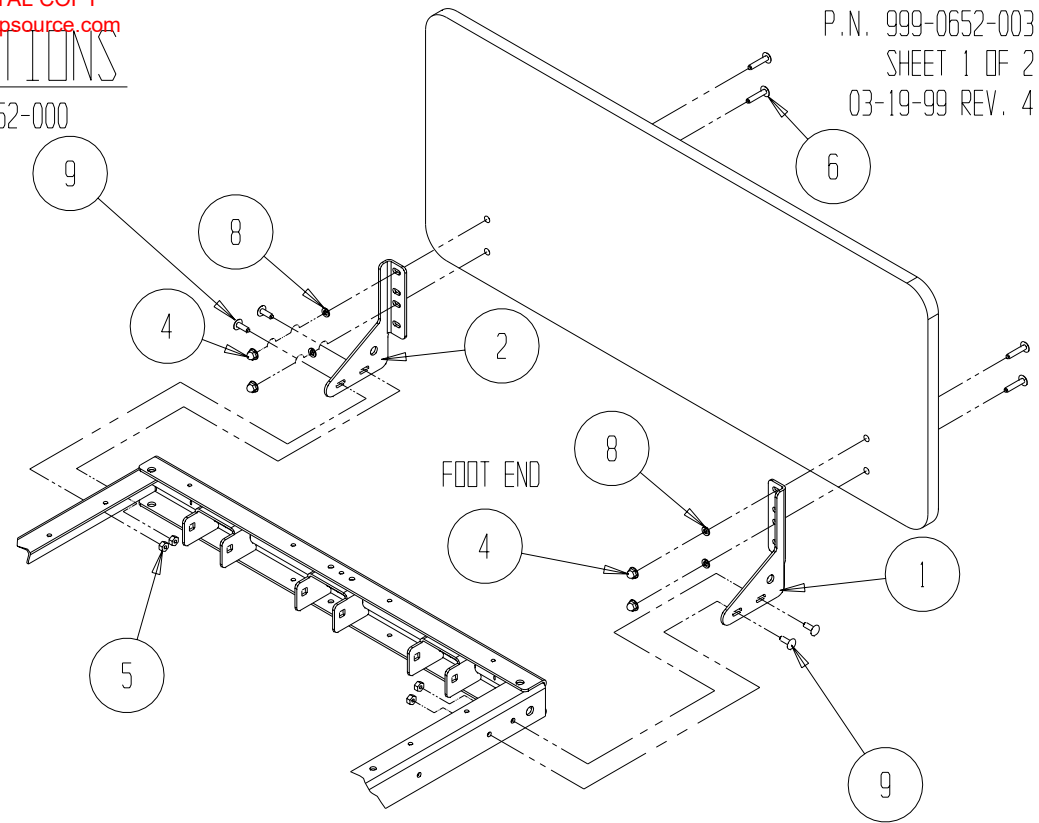
1. ATTACH 999-0652-001,002 BRACKETS TO FOOT BOARD AS SHOWN USING SLOTS INDICATED IN DIAGRAM
2. ATTACH BRACKETS TO FOOT END OF MAINFRAME AS SHOWN.
3. ATTACH 999-0145-002 BRACKETS TO HEAD BOARD AS SHOWN.
4. SLIDE HEAD BOARD ASSEMBLY INTO "L" SLOTS ON HEAD END OF MAINFRAME AS SHOWN.
5. SECURE HEAD BOARD WITH 100-5431-003 BOLTS AS SHOWN.



ASSEMBLY INSTRUCTIONS

FIXED PLACE PANEL MOUNTS 554-0652-000

DIGITAL COPY
www.mpsource.com



P.N. 999-0652-003
SHEET 1 OF 2
03-19-99 REV. 4

ASSEMBLY INSTRUCTIONS

HEAD AND FOOT BOARD

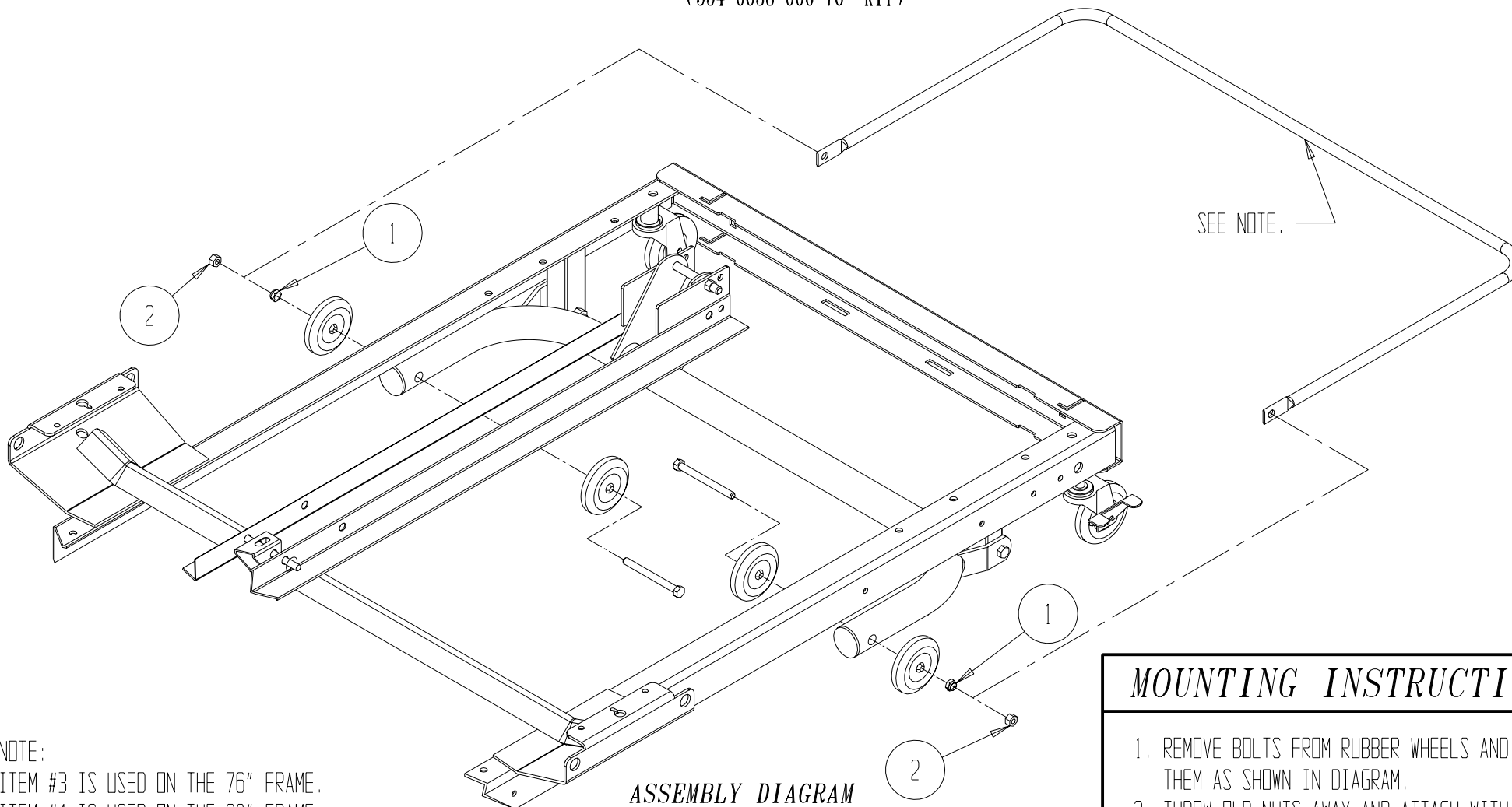
PARTS LIST

QTY	QTY	PART NUMBER	DESCRIPTION
9	4	100-5225-009	1/4-20 X 3/4 LG. CARRIAGE BOLTS
8	4	100-8525-001	1/4 LOCK WASHERS
7	2	100-5431-003	5/16-18 X 1.5" HHMS - FULL THREAD
6	8	100-5225-002	1/4-20 X 1 1/4 LG. CARRIAGE BOLTS
5	8	100-6625-002	1/4-20 HEX NUTS
4	4	100-6525-001	1/4-20 ACORN NUTS
3	2	999-0145-002T	L/H HEAD BRACKET
2	1	999-0652-002T	L/H FOOT BRACKET
1	1	999-0652-001T	R/H FOOT BRACKET

ASSEMBLY INSTRUCTIONS

WALL SAVER (554-0634-000 80" KIT)
(554-0638-000 76" KIT)

DWG # 999-0656-015
SHEET 1 OF 2
REV 2



NOTE:
ITEM #3 IS USED ON THE 76" FRAME.
ITEM #4 IS USED ON THE 80" FRAME.

MOUNTING INSTRUCTIONS

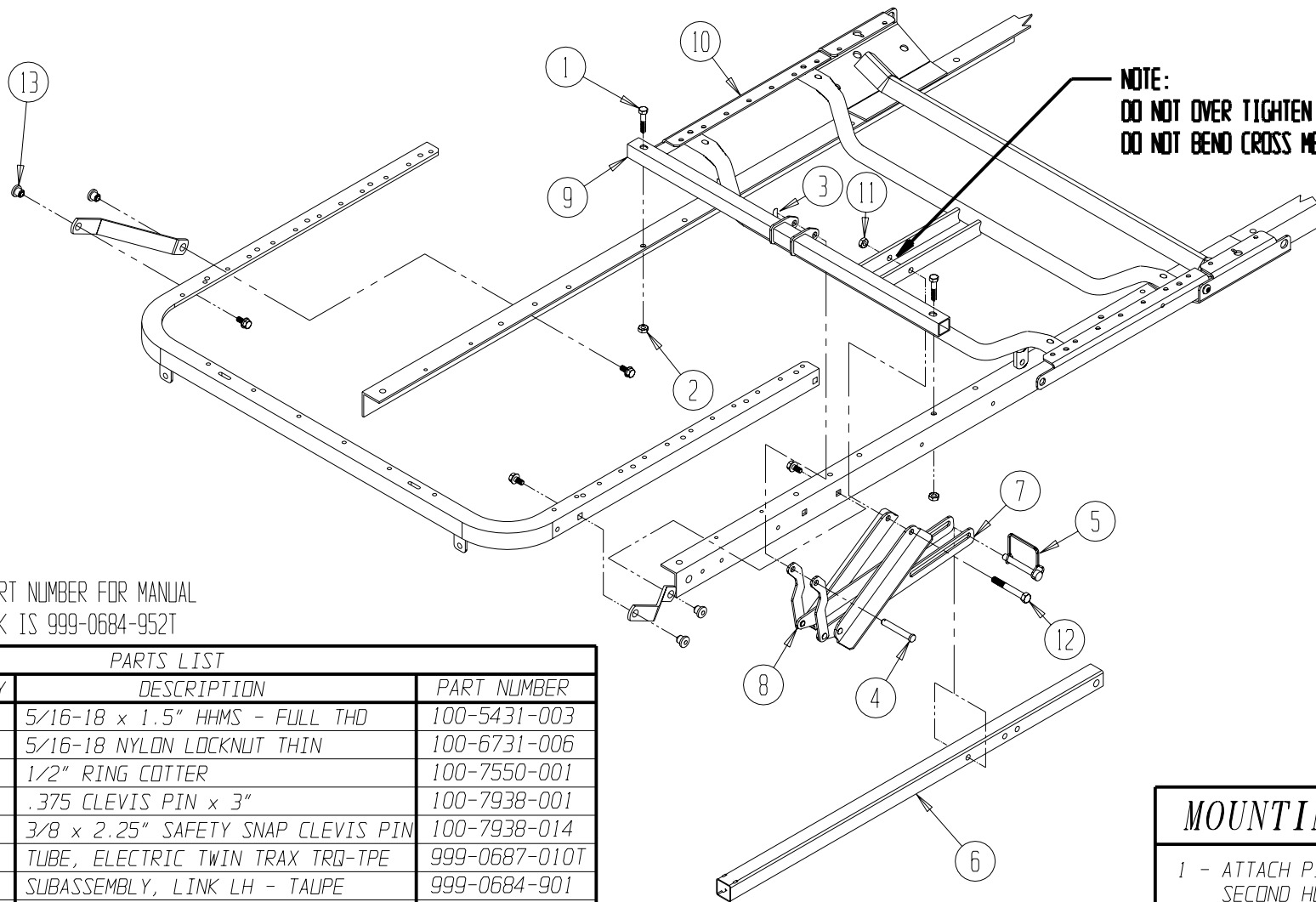
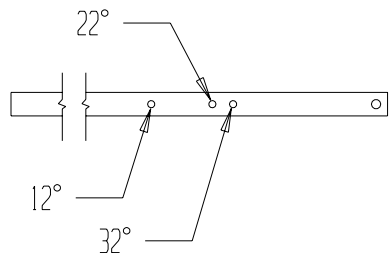
1. REMOVE BOLTS FROM RUBBER WHEELS AND ROTATE THEM AS SHOWN IN DIAGRAM.
2. THROW OLD NUTS AWAY AND ATTACH WITH NEW STEP NUTS. ORIENTATE SO THAT STEP FACES OUT.
3. ATTACH SAVER WITH JAM NUTS AND TIGHTEN SO THAT WALLSAVER CAN STILL ROTATE UP AND DOWN.

PARTS LIST

ITEM	QTY	DESCRIPTION	PART NUMBER
1	2	STEP NUTS	806-0424-002
2	2	3/8-18 NYLON JAM LOCKNUT	100-6738-003
3	1	LD-MAX 76" WALL SAVER	999-0656-076
4	1	LD-MAX 80" WALL SAVER	999-0656-080

ASSEMBLY INSTRUCTIONS

MANUAL TWIN TRAX ASSEMBLY (554-0684-000)
ELECTRIC TWIN TRAX ASSEMBLY (554-0687-000)



NOTE:
DO NOT OVER TIGHTEN NUT AND BOLT.
DO NOT BEND CROSS MEMBERS.

*NOTE: PART NUMBER FOR MANUAL
DRIVE PACK IS 999-0684-952T

PARTS LIST

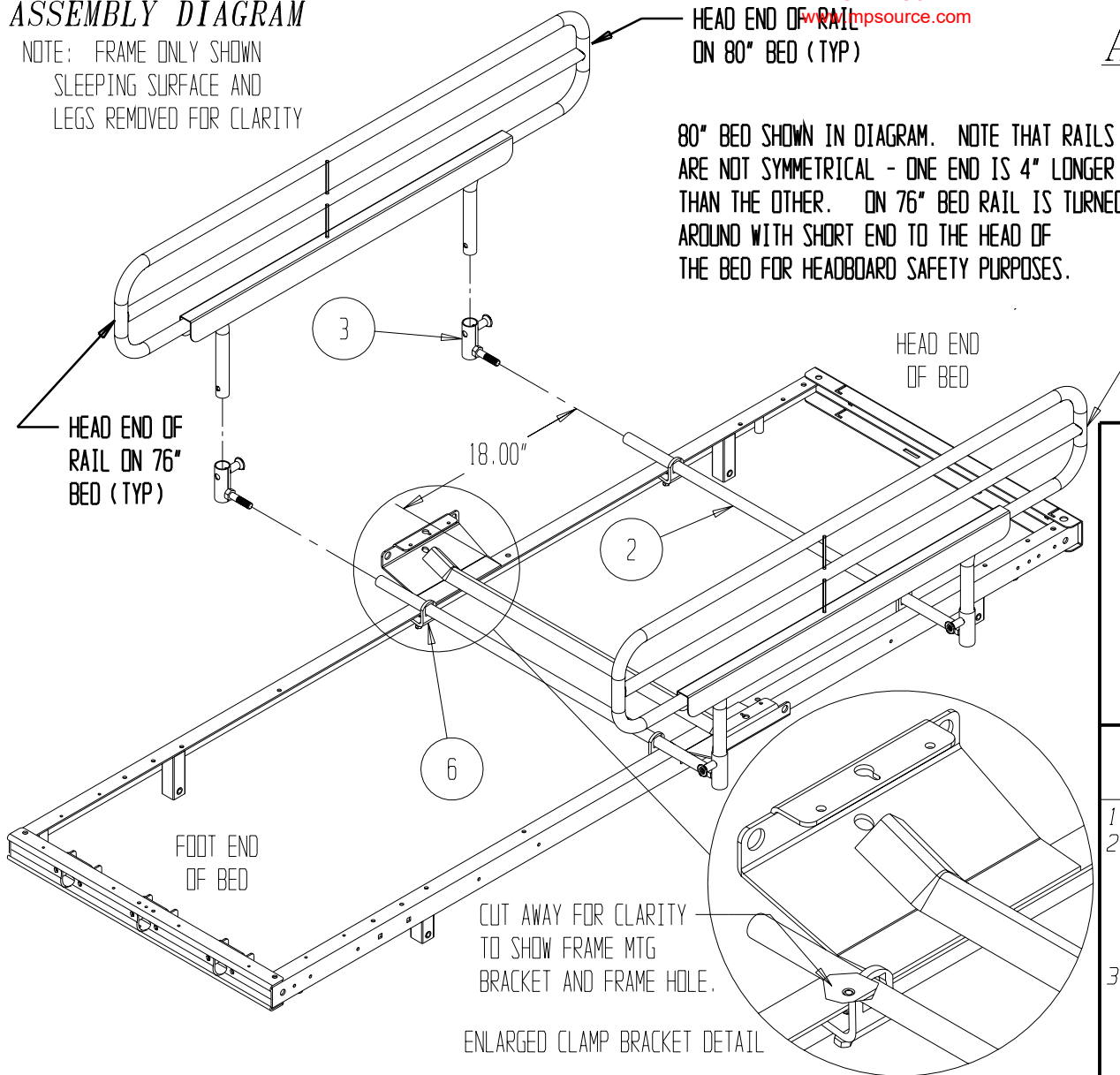
ITEM	QTY	DESCRIPTION	PART NUMBER
1	2	5/16-18 x 1.5" HHMS - FULL THD	100-5431-003
2	2	5/16-18 NYLON LOCKNUT THIN	100-6731-006
3	1	1/2" RING COTTER	100-7550-001
4	1	.375 CLEVIS PIN x 3"	100-7938-001
5	1	3/8 x 2.25" SAFETY SNAP CLEVIS PIN	100-7938-014
6*	1	TUBE, ELECTRIC TWIN TRAX TRQ-TPE	999-0687-010T
7	1	SUBASSEMBLY, LINK LH - TAUPE	999-0684-901
8	1	SUBASSEMBLY, LINK RH - TAUPE	999-0684-902
9	1	WELDMENT, TUBE PIVOT BRACE - TAUPE	999-0684-905T
10	1	WELDMENT, THIGH SECTION - TAUPE	999-0684-940T
11	1	3/8-16 NYLOCK NUT	100-6738-003
12	1	3/8-16 x 3.00" HEX HD. MCH. SCREW	100-5438-024
13	4	SELF WRENCHING NUT	806-0277-008

MOUNTING INSTRUCTIONS

- 1 - ATTACH PIVOT BRACE TUBE TO FRAME IN SECOND HOLE FROM SEAT BRACKET AS SHOWN.
- 2 - ATTACH LEFT AND RIGHT HAND SUBASSEMBLY TO CROSS BRACE AND THIGH SECTION AS SHOWN.
- 3 - ATTACH TO TORQUE TUBE AS SHOWN USING SAFETY SNAP CLEVIS PIN

ASSEMBLY DIAGRAM

NOTE: FRAME ONLY SHOWN
SLEEPING SURFACE AND
LEGS REMOVED FOR CLARITY



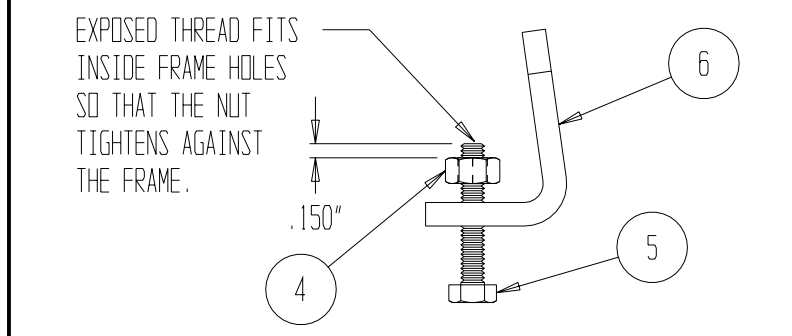
80" BED SHOWN IN DIAGRAM. NOTE THAT RAILS ARE NOT SYMMETRICAL - ONE END IS 4" LONGER THAN THE OTHER. ON 76" BED RAIL IS TURNED AROUND WITH SHORT END TO THE HEAD OF THE BED FOR HEADBOARD SAFETY PURPOSES.

ASSEMBLY INSTRUCTIONS

THREE QUARTER LENGTH REMOVABLE RAIL

P.N. 999-0695-015
1 OF 1
REV. A 2-28-01

ENLARGED VIEW OF CLAMP BRACKET, BOLT, AND NUT. PRE-ASSEMBLE AS SHOWN BEFORE SLIDING OVER SIDERAIL TUBE. EXCESS 1.50" OF THREAD IS USED TO ALIGN BRACKETS WITH HOLES IN FRAME.



MOUNTING INSTRUCTIONS

- 1- PRE-ASSEMBLE ITEMS 4,5 AND 6 AS SHOWN ABOVE.
- 2- SLIDE PRE-ASSEMBLED CLAMP BRACKETS OVER SIDERAIL TUBE WELDMENT (ITEM 2). TWO BRACKETS SLIDE ONTO EACH SIDERAIL TUBE. MAKE SURE TO ORIENT THEM FACING AWAY FROM EACH OTHER SO THAT THE BOLT CAN HOOK UNDER THE FRAME.
- 3- --LOOSELY-- ATTACH SIDERAIL TUBE WELDMENTS WITH CLAMP BRACKETS TO THE FRAME AS SHOWN IN DIAGRAM. MAKE SURE THAT THE CLAMP BRACKET BOLTS ARE ALIGNED IN THE HOLES ON THE FRAME - USE THE HOLES THAT ARE 18.00" FROM THE SEAT SECTION TOWARD THE HEAD, AND THE HOLES THAT ARE NEXT THE THE SEAT SECTION TOWARD THE FOOT.
- 4- ATTACH RAIL MTG BRACKETS (ITEM 3) TO CROSS TUBES ADJUSTING THEM PROPERLY SO THAT THE RAIL CAN BE POSITIONED THE CORRECT DISTANCE FROM THE SLEEPING SURFACE. (SEE DIAGRAM FOR PROPER ORIENTATION)
- 5- ATTACH SIDERAILS (ITEM 1) INTO THE RAIL MTG BRACKETS ALLOWING PLUNGER PINS ON BRACKETS TO FIT INSIDE HOLES ON RAIL TUBES (THIS WILL HOLD THE RAIL UP TO ITS MAX HEIGHT). ONCE THE RAIL HAS BEEN POSITIONED, TIGHTEN ALL BOLTS TO SECURE RAIL.

PARTS LIST

ITEM	QTY	DESCRIPTION	PART NUMBER
1	2	RAIL WELDMENT, 3/4 LENGTH	999-0695-901
2	2	WELDMENT, SIDERAIL TUBE	999-0131-901
3	4	RAIL MOUNTING BRKT ASSEMBLY	999-0035-902
4	4	5/16 - 18 NYLOCK LOCKNUT	100-6731-002
5	4	5/16 - 18 X 1.50" HH BOLT	100-5431-003
6	4	CLAMP BRACKET	999-0083-002

ASSEMBLY INSTRUCTIONS

LOMAX MOUNT HALF TRIGGER RAIL (554-0702-000)

DWG # - 999-0702-015
REV. 2
10-02-03

SIDE RAIL INSPECTION PLAN

INSPECTION OF ALL COMPONENTS

- CHECK COMPONENTS FOR OBVIOUS DAMAGE.
- CHECK HARDWARE PACKAGE ASSURING ALL HARDWARE IS AVAILABLE FOR ASSEMBLY.

SIDE RAIL ASSEMBLY

- INSPECT SIDE RAILS FOR STRESS FRACTURES.
- INSPECT ALL FASTENERS FOR WEAR AND LOOSENESS, REPLACE AND TIGHTEN AS NEEDED.
- BENT SIDE RAIL SHOULD BE REPLACED IMMEDIATELY.
- LUBRICATE ALL PIVOT POINTS AS NEEDED.

NOTE: CONTACT BASIC AMERICAN METAL PRODUCTS CUSTOMER SERVICE DEPARTMENT FOR TECHNICAL SUPPORT AT (800) 365-2338.

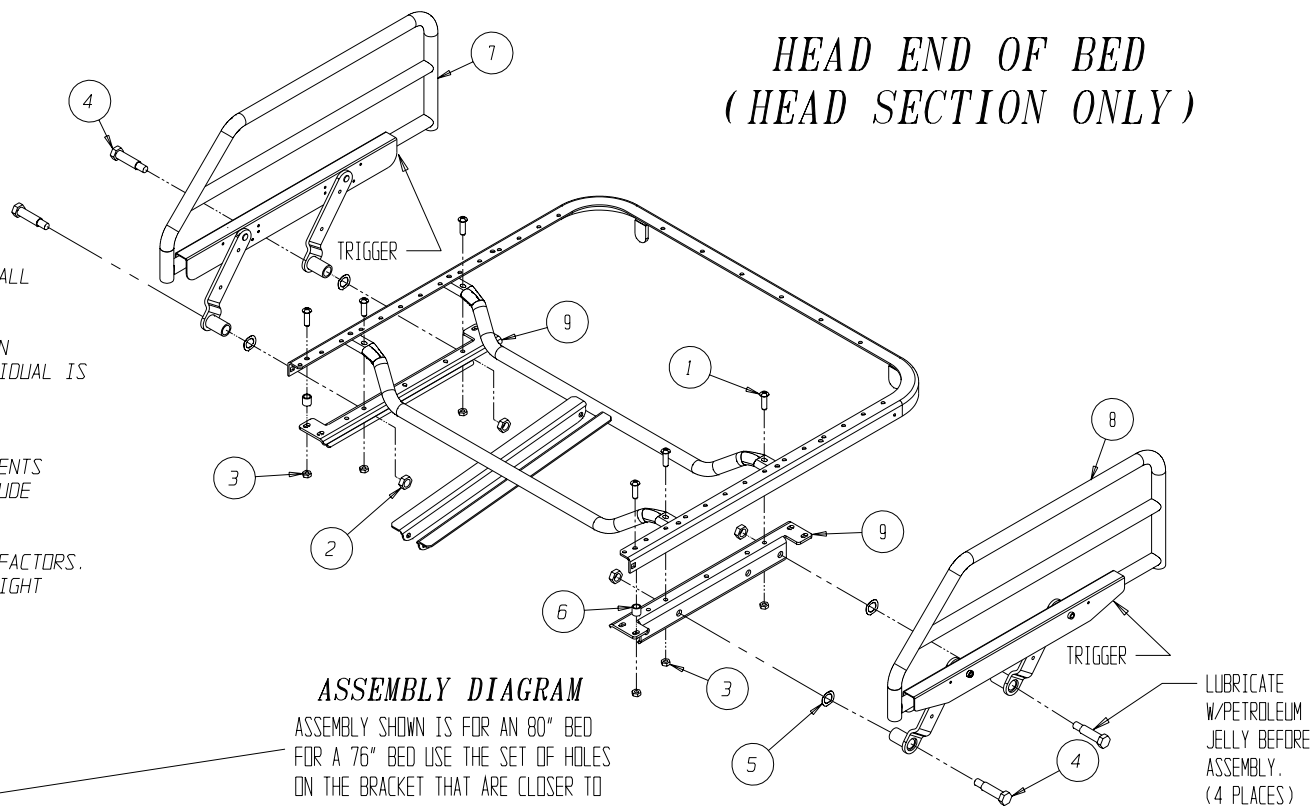
SAFETY SUMMARY

SIDE RAILS, WHEN USED WITH A MANUAL/ELECTRIC BED DO NOT FALL WITHIN ANY WEIGHT LIMITATIONS. SIDE RAILS CAN BE DEFORMED OR BROKEN IF EXCESSIVE SIDE PRESSURE IS EXERTED ON THE SIDE RAILS. THESE SIDE RAILS ARE FOR THE PURPOSE OF PREVENTING AN INDIVIDUAL FROM ROLLING/CLIMBING OUT OF A BED. IF AN INDIVIDUAL IS CAPABLE OF HURTING HIMSELF/HERSELF, AN ALTERNATIVE MEANS OF PREVENTING THE PATIENT FROM ROLLING/CLIMBING OUT OF A BED SHOULD BE INITIATED.

ADDITIONAL SAFETY MEASURES SHOULD BE CONSIDERED FOR PATIENTS IDENTIFIED AS HIGH RISK FOR ENTRAPMENT. SUCH PATIENTS INCLUDE THOSE WITH PRE-EXISTING CONDITIONS SUCH AS CONFUSION, RESTLESSNESS, LACK OF MUSCLE CONTROL, ALTERED MENTAL STATUS (ORGANIC OR MEDICATION RELATED), OR A COMBINATION OF THESE FACTORS. INCREASED RISK ALSO OCCURS WHEN THE PATIENT'S SIZE AND OR WEIGHT ARE INAPPROPRIATE FOR THE BED'S DIMENSIONS.

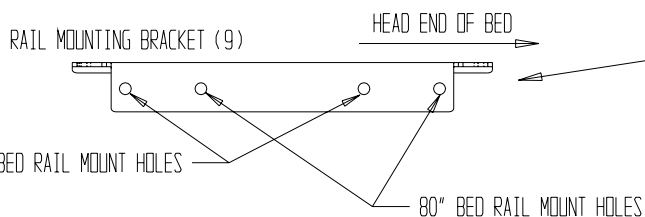
DO NOT USE SIDE RAILS AS PUSH HANDLES FOR MOVING THE BED.

HEAD END OF BED (HEAD SECTION ONLY)



ASSEMBLY DIAGRAM

ASSEMBLY SHOWN IS FOR AN 80" BED FOR A 76" BED USE THE SET OF HOLES ON THE BRACKET THAT ARE CLOSER TO THE FOOT END OF THE BED.



MOUNTING INSTRUCTIONS

- LUBRICATE AS INDICATED IN DIAGRAM.
- SECURE ONE RAIL BRACKET (9) TO INSIDE EDGE OF HEAD WING USING HEX HEAD CAP SCREWS (1), NYLOCK NUTS (3) AND SPACER (6). NOTE THE MOUNTING HOLES THAT ARE USED. (SEE DIAGRAM)
- ATTACH RAIL USING SHOULDER BOLT (4) WAVE WASHER (5) AND NYLOCK NUT (2). (POSITION RAIL SO THAT TRIGGER IS LOCATED TOWARDS HEAD END OF BED.) USE THE PROPER BRACKET HOLES FOR YOUR (76" OR 80") BED. TIGHTEN BOLT.
- FOLLOW STEPS 1, 2 AND 3 FOR THE OTHER RAIL.

PARTS LIST

ITEM	QTY	DESCRIPTION	PART NUMBER
1	6	5/16-18 1.25 BUTT HD SCREW	100-5431-016
2	4	1/2-13 NYLOCK NUT	100-6750-005
3	6	5/16-18 NYLON LOCKNUT THIN (.25)	100-6731-006
4	4	SHOULDER BOLT- RAIL MOUNTING	999-0637-100
5	4	WAVE WASHER	555-1000-122
6	2	1/2 ID 5/8 DD SPACER X 0.625" LONG	999-0637-105
7	1	RAIL ASSEMBLY, 1/2 RIGHT	999-0702-907T
8	1	RAIL ASSEMBLY, 1/2 LEFT	999-0702-908T
9	2	BRACKET, 1/2 RAIL MTG.	999-0704-006T

NOTE: THERE ARE TWO HARDWARE BAGS PACKAGED WITH YOUR RAILS. THERE WILL BE EXTRA PARTS IN THE 0702 HARDWARE BAG THAT YOU DO NOT USE - THEY ARE USED ON A DIFFERENT MODEL BED.

PARTS NOT USED LIST

QTY	DESCRIPTION	PART NUMBER
8	5/16 X 1.75 BTN HD SCREW	100-5431-036
2	1/2ID X 5/8DD X 1.00 SPCR	999-0702-105

SECTION FOUR
TROUBLE SHOOTING GUIDE

Actuator and Control Box Troubleshooting Guide

1. Confirm the **Power Cord** is **properly** connected.
2. Confirm the **Pendant** is **properly** connected.
3. Do a **Visual Inspection** of the **Control Box**.
 - Do all the **Actuator Connectors** have six (6) pins, and are they straight?
 - Does the **Pendant Connector** have nine (9) pins, and are they straight?
 - Is the **Power Cord** or **Plug** damaged?
 - Is the **Control Box** damaged?

All Functions Inoperative

1. When a **Pendant Button** is pushed and a “**clicking**” sound is heard, but the **Actuator** does not move
 - Replace the **Control Box**
 - Bad relay
2. When a **Pendant Button** is pushed, and there is no “**clicking**” sound, and/or **Actuator** movement
 - Replace the **Pendant**

Head Up or Head Down Function Inoperative

Step 1: Actuator

Disconnect the **Head Actuator** from the **Control Box**

Disconnect the **Foot Actuator** from the **Control Box**

Reconnect the **Head Actuator** into the **Foot Actuator** connector on the **Control Box**

Then activate the **Foot Buttons** on the **Pendant**

- If the **Actuator** does not function
- Replace the **Actuator**
- If the **Actuator** functions
- Reconnect all cords to original positions
- Press the head up and/or down button again
- If you hear a “**clicking**” sound
- Replace the **Control Box**
- If you hear no “**clicking**” sound
- Replace the **Pendant**

Foot Up or Foot Down Function Inoperative

Step 1: Actuator

Disconnect the **Foot Actuator** from the **Control Box**

Disconnect the **Head Actuator** from the **Control Box**

Reconnect the **Foot Actuator** into the **Head Actuator** connector on the **Control Box**

Then activate **the Head Buttons** on the **Pendant**

- If the **Actuator** does not function
- Replace the **Actuator**
- If the **Actuator** functions
- Reconnect all cords to original positions
- Press the foot up and/or down button again
- If you hear a “**clicking**” sound
- Replace the **Control Box**
- If you hear no “**clicking**” sound
- Replace the **Pendant**

Hi/Lo Function Inoperative

Step 1: Actuator

Disconnect the **Hi/Lo Actuator** from the **Control Box**

Disconnect the **Foot** and/or **Head Actuator** from the **Control Box**

Reconnect the **Hi/Lo Actuator** into the **Foot** and/or **Head Actuator** connector on the **Control Box**

Then activate **the Head and/or Foot Buttons** on the **Pendant**

- If the **Actuator** does not function
- Replace the **Actuator**
- If the **Actuator** functions
- Reconnect all cords to original positions
- Press the hi/lo up and/or down button again
- If you hear a “**clicking**” sound
- Replace the **Control Box**
- If you hear no “**clicking**” sound
- Replace the **Pendant**