

Maxi Move

Parts List

ARJOHUNTLEIGH
GETINGE GROUP



Design Policy and Copyright

® and ™ are trademarks belonging to the ArjoHuntleigh group of companies.

© ArjoHuntleigh AB 2017.

As our policy is one of continuous improvement, we reserve the right to modify designs without prior notice. The content of this publication may not be copied either whole or in part without the consent of ArjoHuntleigh AB.

General Information

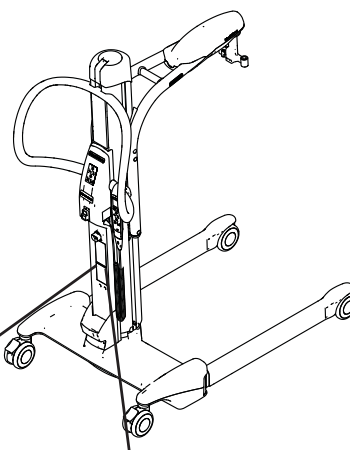
Before ordering spare parts, study the exploded view closely and make sure that you are familiar with all the spare parts involved.

Please note that gaskets and o-rings normally are included in kits and can not be ordered separately.

Before contacting the ArjoHuntleigh Parts Sales department, always have the following information at hand:

- Product number: See label.
- Serial number: See label.

Product Number Codification




Product Number Nomenclature

K M C X X X


- JIB OPTION
 - N - STANDARD JIB
 - E - EXTENDED JIB
- SCALE OPTION
 - X - WITHOUT SCALE
 - A - WITH CERTIFIED SCALE (CLASS III)
 - U - WITH NON-CERTIFIED SCALE
- WHEEL OPTION
 - S - STANDARD HEIGHT (WHEEL Ø 100MM)
 - L - LOW HEIGHT (WHEEL Ø 86 MM)
 - E - EXTRA LOW HEIGHT (WHEEL Ø 49 MM)
- MAXI MOVE

Example of ID label

REF **KMCXXX** ← Product number



SN **XXXXXXXXXX** ← Serial number




ArjoHuntleigh AB ← Manufacturer information
Hans Michelsensgatan 10
211 30 Malmö
SWEDEN

2014 - 09 ← Date of manufacture


MADE IN CANADA

Example of old ID label

REF **KMCXXX** ← Product number



SN **KMC-XXXXXX** ← Serial number



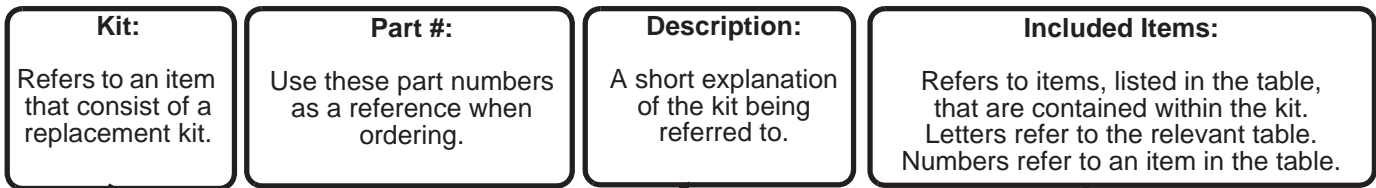
ArjoHuntleigh AB ← Manufacturer information
Verkstadsvägen 5
241 38 Eslöv
SWEDEN

2012 - 04 ← Date of manufacture

MADE IN CANADA

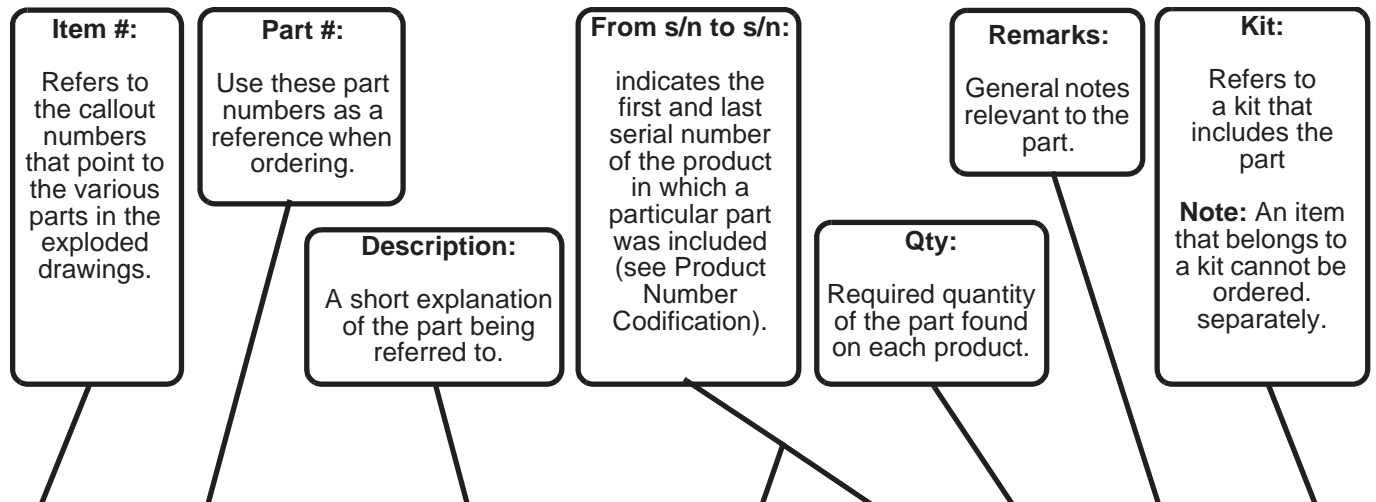
Modifications made to the equipment without ArjoHuntleigh's express acknowledgement will invalidate supplier's product liability.

How to Read Parts List Tables



A **REPLACEMENT KITS TABLE**

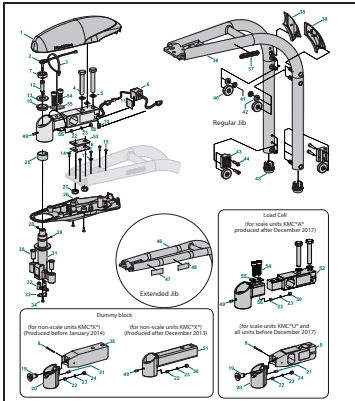
Kit	Part #	Description	Included Items
K1	700-00001	FIRST REPLACEMENT KIT	B2
K2	700-00002	SECOND REPLACEMENT KIT	B6-B7
K3	700-00003	THIRD REPLACEMENT KIT	B1, B3-B4
K4	700-00004	FOURTH REPLACEMENT KIT	B5
K1	700-00001	FIRST REPLACEMENT KIT	B2



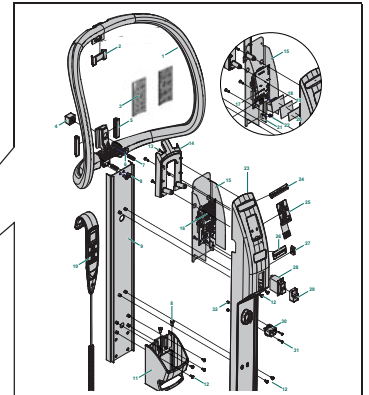
B **PARTS DETAIL TABLE**

Item	Part #	Description	From s/n	To s/n	Qty	Remarks	Kit
1	001-00001	FIRST PART			2	This part was replaced	K3
2	001-00002	SECOND PART			1		K1
3	001-00003	THIRD PART			1		K3
4	001-00004	FOURTH PART			1		K3
5	001-00005	FIFTH PART			1	Include item 13	K4
6	001-00006	SIXTH PART	-	KMC-00123	1		K2
7	001-00007	SEVENTH PART	KMC-00124	-	1	Not Illustrated	K2

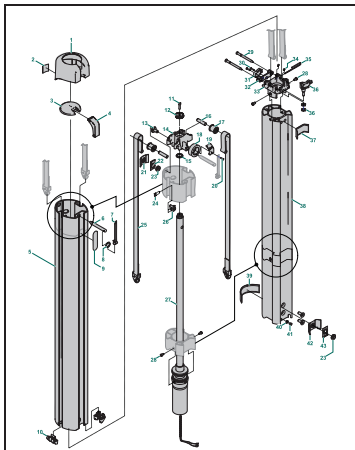
D - Jib Assembly Page 12



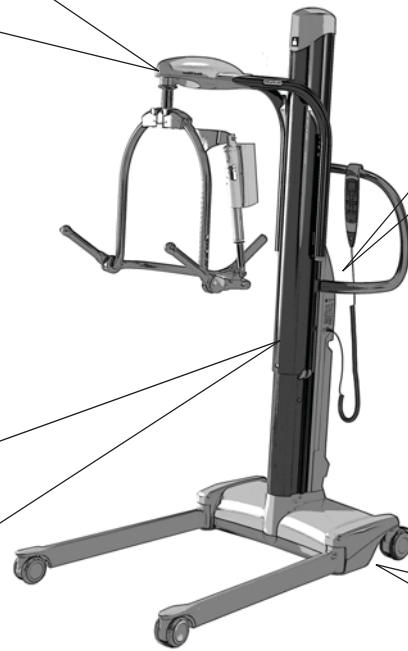
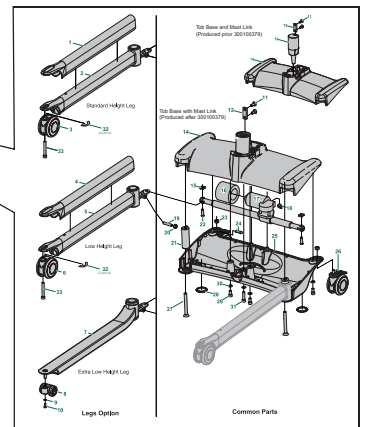
E - Backplate Assembly Page 15



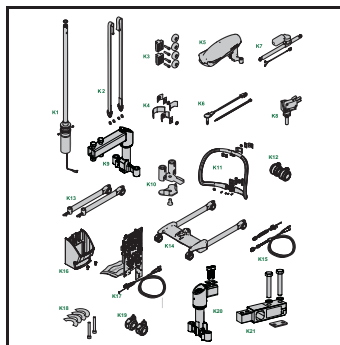
C - Mast Assembly Page 10



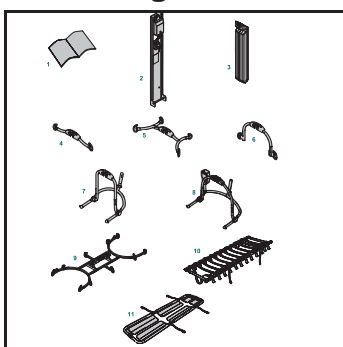
F - Leg and Chassis Assembly Page 17



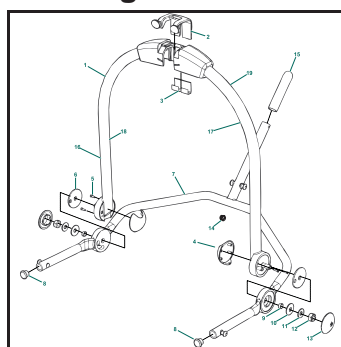
A - Replacement Kits Page 6



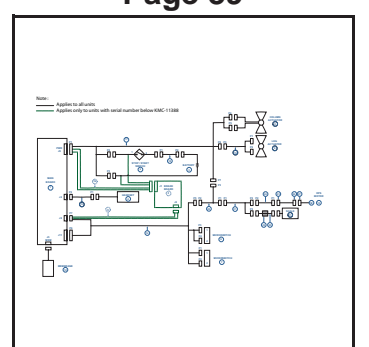
B - Accessories Page 8



G - Spreader Bars Page 19 - 38

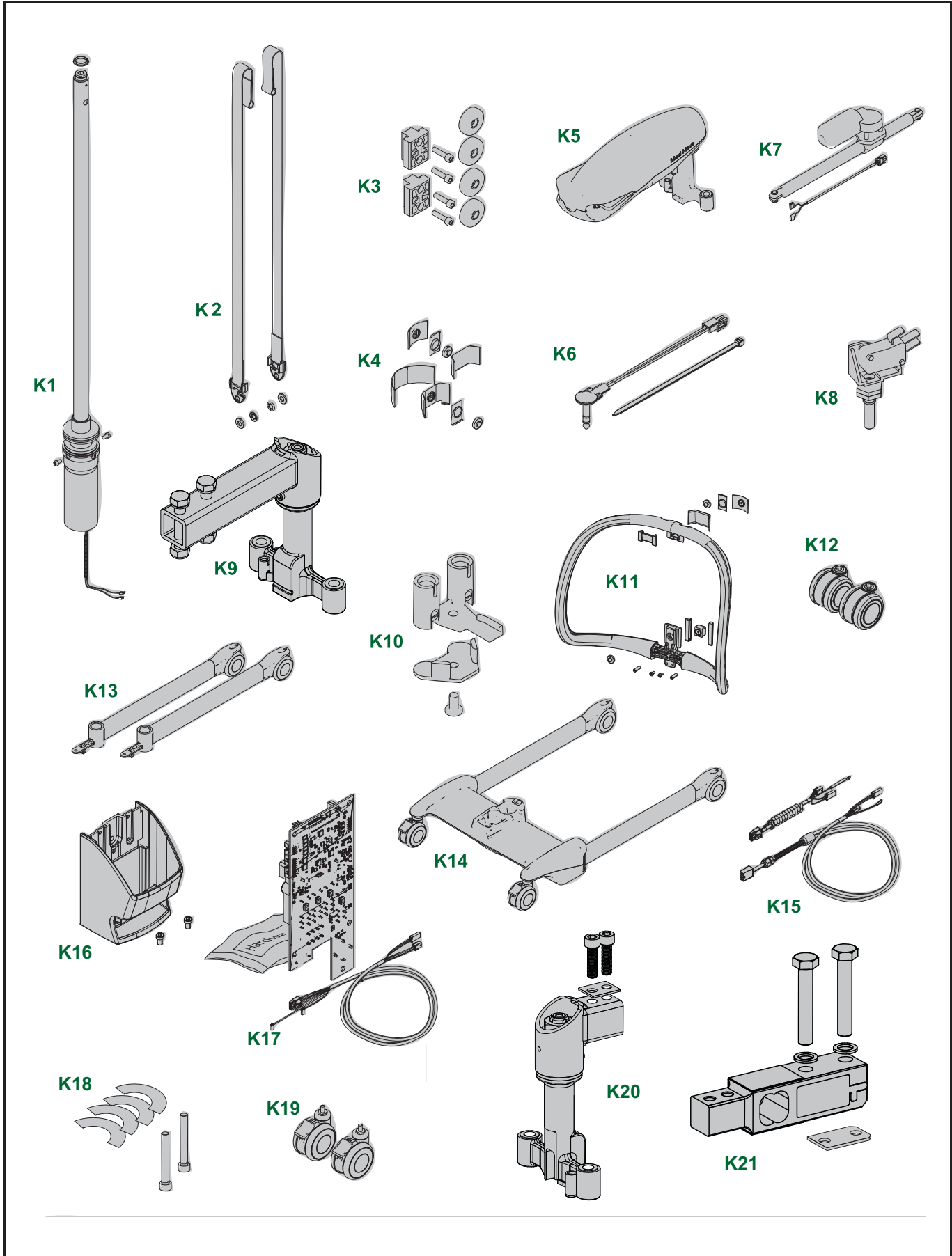


H - Electrical Wiring Diagram Page 39



Part Designations

A - Replacement Kits



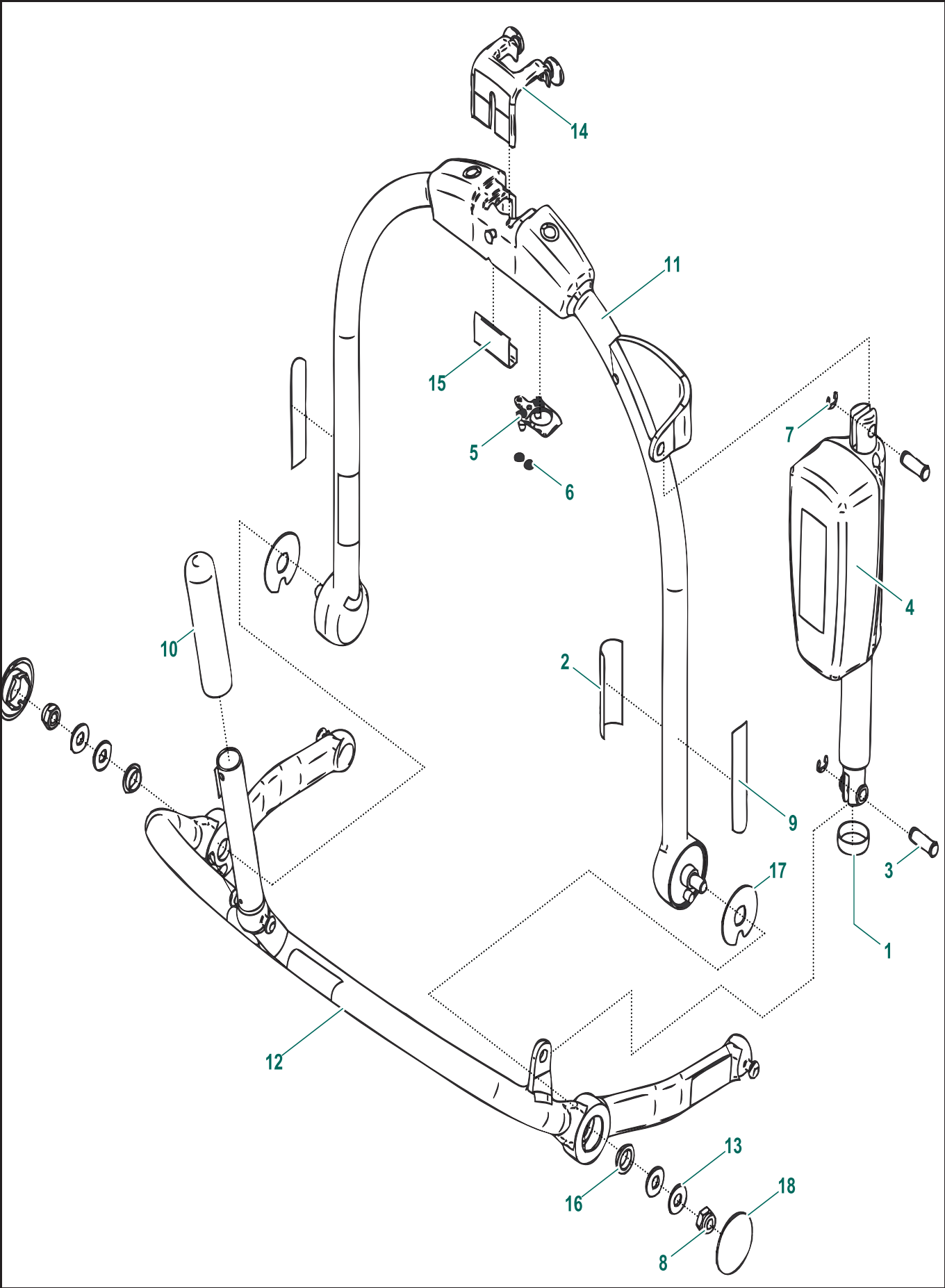
Part Designations

A			
REPLACEMENT KITS			
Kit	Part #	Description	Included Items
K1	700-25305	Column actuator replacement kit	C15, C27 - C28
K2	700-25306	Band replacement kit	C25, D41 - D42
K3	700-25310	Roller jib replacement kit	D40, D43 - D44
K4	700-25307	Slider replacement kit	C21 - C23, C37, C39, C42 - C43
K5	700-25312	Class III scale replacement kit (US)	D1 - D9, D11 - D15, D18 - D34
	700-25320	Class III scale for standard jib replacement kit (CE)	D1 - D7, D11- D15, D18, D22 - D34, D49 - D50, D52 - D56
	700-25325	Class III scale for extended jib replacement kit (CE)	D1 - D7, D11 - D15, D18, D22 - D34, D49 - D50, D52 - D56
	700-25335	Scale for standard jib upgrade kit (CE)	D1 - D7, D11 - D15, D18, D22 - D34, D49 - D50, D52 - D56
	700-25340	Scale for standard jib upgrade kit (NON-CE)	D1 - D9, D11 - D15, D18 - D34
	700-25350	Scale for extended jib upgrade kit (CE)	D1 - D 7, D11 - D15, D18, D22 - D34, D49 - D50, D52 - D56
K6	700-25027	Combi harness replacement kit	D2 - D3
K7	700-25302	Chassis actuator replacement kit	F15 - 17, F22
K8	700-25345	Upper limit switch replacement kit	C36
K9	700-25329	Dummy block replacement kit	D22 - 23, D49 - 51
K10	700-25351	DPS electric connector kit	D32 - D34
K11	700-25311	Handle replacement kit	E1, E3 - E7, E9
K12	700-00088	Front caster replacement kit -100 mm Swivel (KMCS _{**})	2x F3
	700-00089	Front caster replacement kit - 86 mm Swivel (KMCL _{**})	2x F6
	700-25110	Front caster replacement kit - 49 mm Swivel (KMCE _{**})	2x F8
K13	700-25301	Standard height leg replacement kit (KMCS _{**})	2x (F1 - F3, F19 - F20), F32, F33
	700-25300	Low height leg replacement kit (KMCL _{**})	2x (F4 - F6, F19 - F20) , F32, F33
	700-25313	Extra Low height leg replacement kit (KMCE _{**})	2x (F7 - F10, F19 - F20)
K14	700-25304	Standard base replacement kit	F1 - F3, F11 - F33
	700-25303	Low height base replacement kit	F4 - F6, F11 - F33
K15	700-25360	Flexible cable for standard jib kit	H20 - H21
	700-25361	Flexible cable for extended jib kit	
K16	700-25001	Battery support replacement kit	E8, E11
K17	700-00084-01	UMC PCB replacement kit for KMC*UN & KMC*XN	H1, H17 (modified), hardware and replacement instructions
	700-00084-02	UMC PCB replacement kit for KMC*XE	
	700-00084-33	UMC PCB replacement kit for KMC*AN	
	700-00084-34	UMC PCB replacement kit for KMC*AE	
K18	700-25002	Leg Aligment Kit	F32, F33
K19	700-00094	Rear caster replacement kit	2x (F23, F26)
K20	700-25168	Scale attachment replacement kit (CE)	D18, D25, D28 - D34, D54 - D56
K21	700-25205	Class III load cell replacement kit (CE)	D4, D5, D27, D52 - D54

Note: -XX in listed part number refers to color code suffix: 24 = Cache (light) Blue, 31 = Dark Blue

Part Designations

B - Accessories

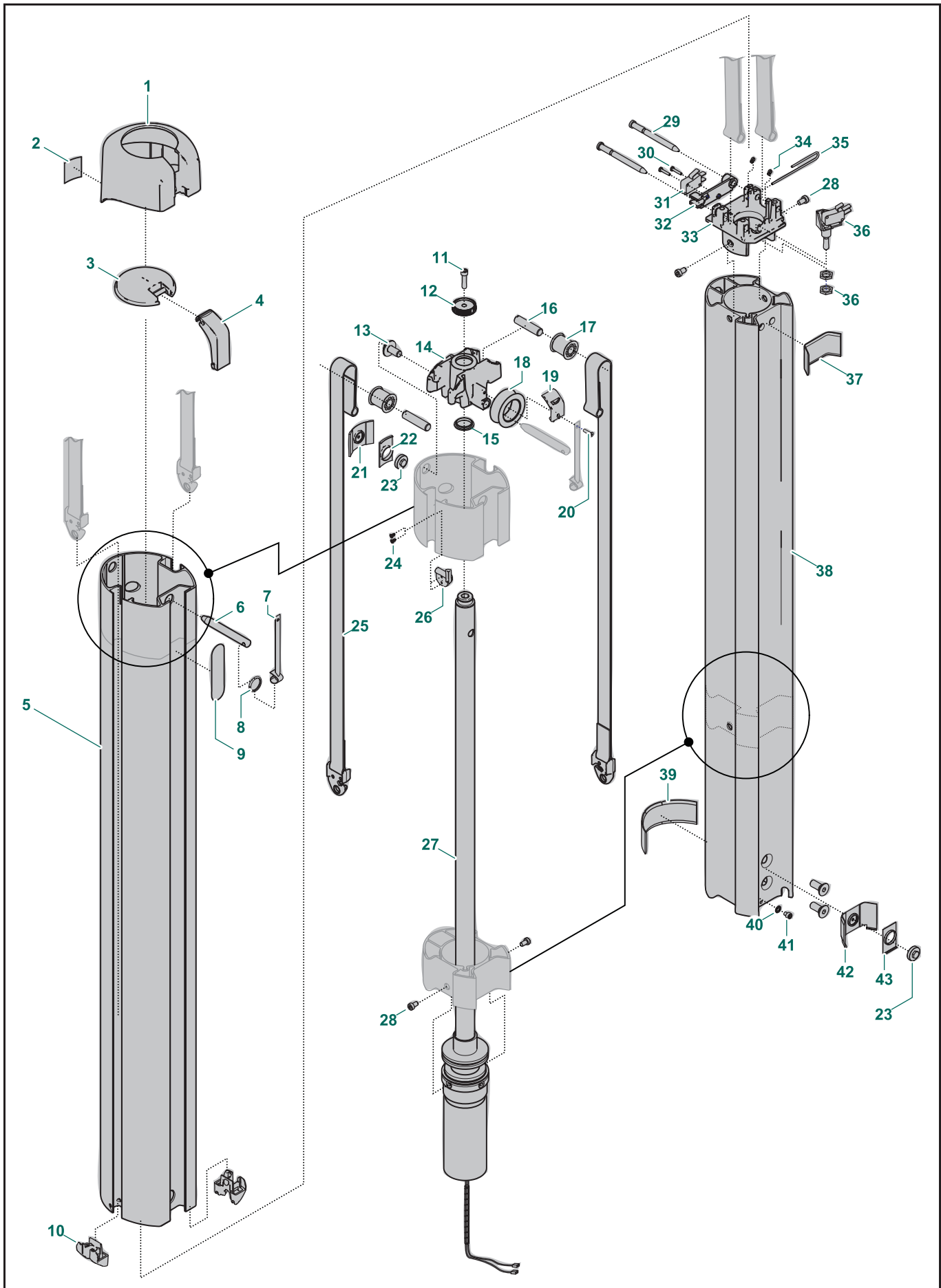


Part Designations

B		ACCESSORIES					
Item	Part #	Description	From s/n	To s/n	Qty	Remarks	Kit
1	001.25060	Maxi Move Instruction for Use			1		
	001.25065	Maxi Move Preventive Maintenance Schedual			1		
	001.25075	Maxi Move Service and Repair Manual			-		
2	NDA8200-INT	Universal wall charger			1		
3	NDA0100-20	Battery Pack			1		
	NDA0200-20		obsolete				
4	KMA82387-24	Two-Point Spreader Bar			-	Page 19 (obsolete)	
	700.19326	Two-Point Spreader Bar (227 kg)			-	Page 20	
5	KMA82203-24	Four-Point Spreader Bar				Page 21 (obsolete)	
	700.19331	Four-Point Spreader Bar (227 kg)				Page 22	
6	700.19303	Loop Medium Combi Spreader bar (227 kg)				Page 23	
	700.19306	Combi Medium Manual DPS Spreader Bar (227kg)				Page 24	
7	KMA82338-XX	Small Manual DPS Spreader Bar				Page 25 (obsolete)	
	KMA82159-24	Medium Manual DPS Spreader Bar				Page 25 (obsolete)	
	700.19301	Small Manual DPS Spreader Bar (227 kg)				Page 27	
8	KMA82165-24	Medium Powered DPS Spreader Bar				Page 29 (obsolete)	
	KMA82205-31	Large Powered DPS Spreader Bar				Page 29 (obsolete)	
	700.19311	Combi Medium Powered DPS Spreader Bar (227 kg)				Page 31	
	700.19316	Combi Large Powered DPS Spreader Bar (227 kg)				Page 33	
9	700-19302	Stretcher Frame (160 kg)				Page 35	
	KMA82334	Stretcher Frame				Page 36 (obsolete)	
10	KMA1003-20	Strap Stretcher				Page 37 (obsolete)	
11	KRA2210-20	Scoop Stretcher				Page 38 (obsolete)	

Part Designations

C - Mast Assembly

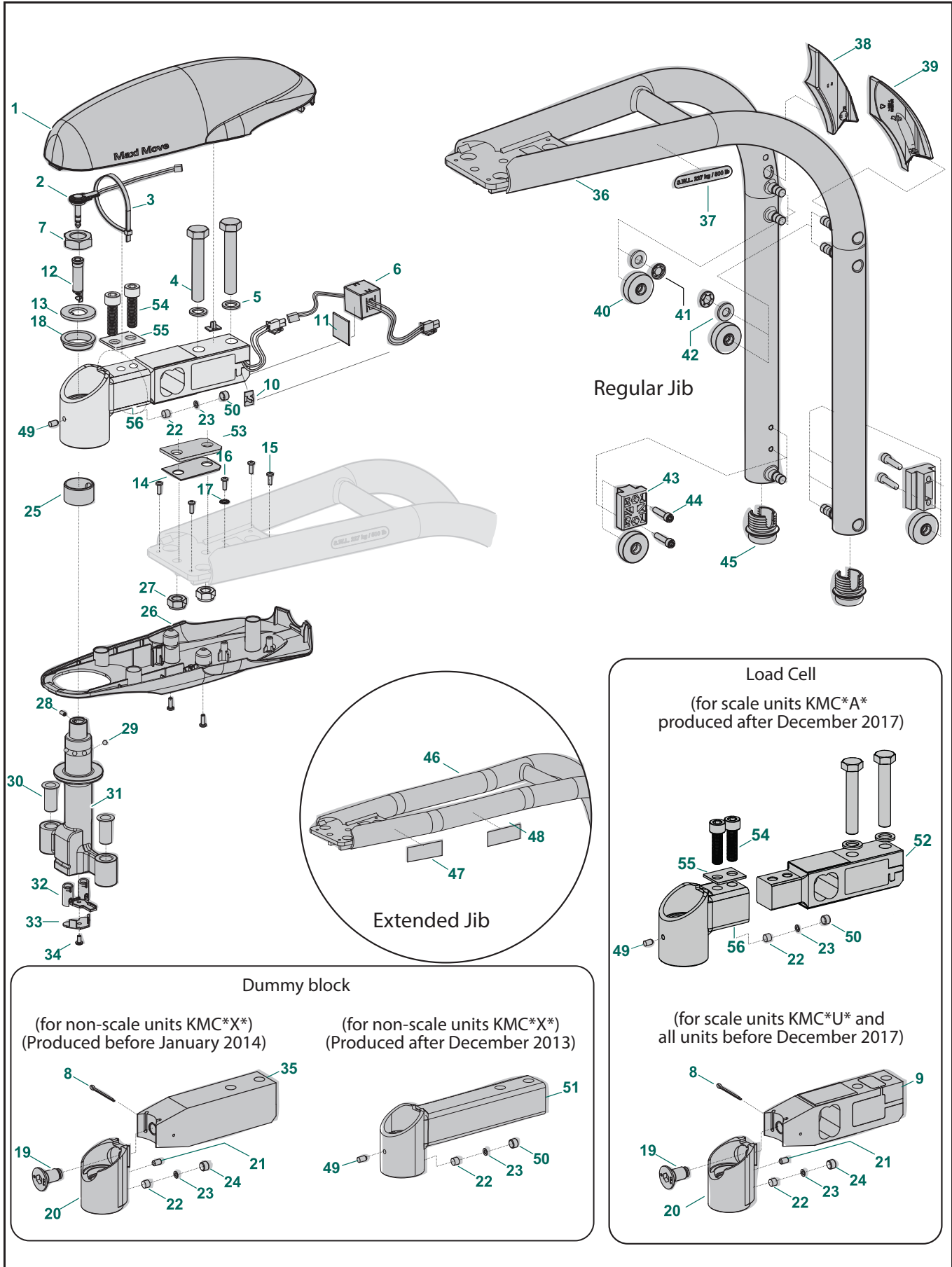


Part Designations

C		MAST ASSEMBLY					
Item	Part #	Description	From s/n	To s/n	Qty	Remarks	Kit
1	200.25026	Column top cover			1		
2	001.25012	Scale Option label			1		
3	200.25031	Emergency lowering cover			1		
4	200.25030	Emergency lowering lever			1		
5	240.25017	Outer mast			1		
6	203.25025	Emergency lowering locking pin			1		
7	362.25086	Emergency lowering strap pin			1		
8	000.00921	Split ring			1		
9	001.25015	Emergency Lowering sticker			1		
10	200.25044	Outer mast protector insert			2		
11	000.03135	M6 x 25 zinc socket screw			1		
12	200.25027	Hex interface emergency lowering			1		
13	200-25094	Top casting retaining bolt			1		
14	202.25022	Top outer bracket			1		
15	000.25005	22-25 x 4.5 mm flange bushing			1		
16	200.25024	Roller Pin			2		
17	MX01560-00	Roller			2		
18	200.25083	Cable guide roller			1		
19	200.25084	Cable cover plate			1		
20	000.02511	M4 x 16 flat Phillips zinc screw			1		
21	200.25037	Upper slider - front			1		K4
22	203.25040	Upper slider adjust. block			1		K4
23	204.25042	Adjustment screw slider			2		K4
24	000.25045	4-20 1/4 flat zp Torx screw			2		
25	362.25018	Lift band assembly			2		K2
26	200.25086	Flexible cable slide			1		
27	400-25000 (000.25035)	Actuator assembly (with 150 mm spiral wire wrap)			1		K1
28	000-00023	M6 x 12 socket low zp adhesive screw			4		
29	200.25043	Lift strap pin			2		
30	000.02105	M3 x 16 pan Phillips zinc screw			2		
31	460-25020	Micro switch			1		
32	KPX00110-00	Plate switch mounting			1		
33	202.25021	Top inner bracket			1		
34	E0275	3.9" Tie wrap			2		
35	200.25066	Lower limit spring wire			1		
36	600-25345	Mounted micro switch panel			1		K8
37	200.25036	Upper slider - rear			1		K4
38	240.25011	Inner mast			1		
39	200.25039	Lower slider - front			1		K4
40	000.02915	M5 zinc starwasher	KMC-03000 300000000	KMC-23000 -	1		
41	000.02545	M5 x 6 socket screw	KMC-03000 300000000	KMC-23000 -	1		
42	200.25038	Lower slider - rear			1		K4
43	203.25041	Lower slider adjustment block			1		K4

Part Designations

D - Jib Assembly



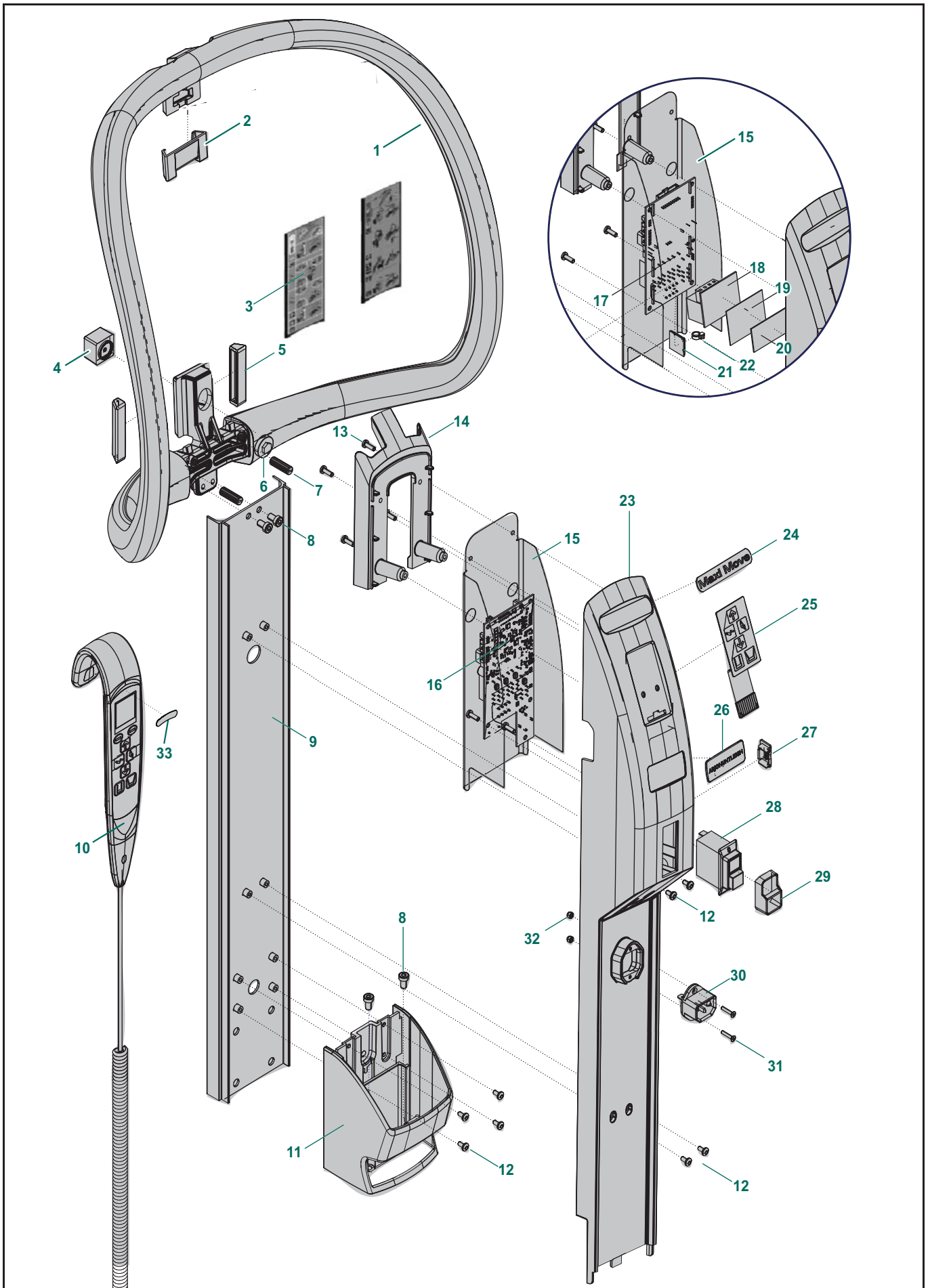
Part Designations

D JIB ASSEMBLY							
Item	Part #	Description	From s/n	To s/n	Qty	Remarks	Kit
1	200.25056	Jib top cover			1		
2	402-25027	Combi wire harness interface			1		K6
3	E0289	Tie wrap			1		
4	000.25028	M12 x 70 zinc button head bolt			2		
5	000.04750	M12 zinc flat washer (20 od)			2		
6	405.20801	Ferrite			1		
7	000.25025	M20 zp (11 mm th) jam locknut			1		
8	000.25026	3/32 x 2 zp cotter pin			1	Not used after FEB 2016	
9	200.25200	Single-point load cell	KMC-00000	KMC-23000	1	KMC-*A*	
			300000000	-			
9	200-25255-US	Single Point Load Cell - US			1	KMC-*U*	K5
10	450-00159	Wire-clip latch			2		
11	001.00260	Tape 3M			1		
12	402-25028	T-Bar Socket			1		
13	203.25078	Combi flat washer			1		
14	204.25202	Load cell shim			0 to 3	According to the assembly	
15	000.02480	4.0 x 12 tap screw			6		
16	000.02545	M5 x 6 socket screw	KMC-03000	KMC-23000	1		
			300000000	-			
17	000.02915	M5 zinc starwasher	KMC-03000	KMC-23000	1		
			300000000	-			
18	000.25042	Top combi bushing adaptor			1		
19	000.25020	M14 X 27 flat zp adhesive screw	KMC-00000	KMC-23000	1	KMC-*A*	
			300000000	300134998			
			KMC-00000	KMC-23000			
			300000000	300095304			
	000-30250	M14 X 27 flat zp adhesive screw	300134999	300237359	1	KMC-*A*	
			300095305	-		KMC-*U*	
20	236.25034	Combi adaptor			1		K5, K9
21	000.03030	M6 x 10 zinc setscrew			1		
22	200.25035	Friction lug			1		
23	000.25010	4.2 x 8.0 x 0.4 mm spring washer			1		
24	000.25015	M10 x 8 zinc flathead setscrew			1		
25	000.25030	30-34 x 20 mm bushing with hole			1		
26	200.25080	Combi jib bottom cover			1		
27	000.04855	M12 zinc FUJILOK locknut			2		
28	6190538	M4 x 8 flat ss dri-loc setscrew			1		
29	000.19950	ø5 mm ball bearing			5		
30	200.25093	12-14 x 31 mm flange bushing (qfm)			2		
31	239.25074	Machined T-bar			1		K5, K9, K20
32	KMX82161-00	Pick-up assembly			1		K10
33	200-25152	T-bar connector guard			1		K10
34	000.02501	M4 x 8 zinc pan Torx screw			1		K10
35	204.25072	Dummy block (for non-scale units KMC-*X*)	Before Feb-2014		1		K9
36	240.25060	Jib			1		
37	001.25000	SWL (227 kg [500 lb]) label			2	KMC-*S	
38	200.25069	Jib right finger antipinch			1		
39	200.25068	Jib left finger antipinch			1		
40	200.25079	Machined jib roller			4		K3
41	KPX02180-00	10 mm starlock push-on fastener			2		
42	000.04450	M10 2.5t Nylon flat washer			2		

Part Designations

D							
JIB ASSEMBLY							
Item	Part #	Description	From s/n	To s/n	Qty	Remarks	Kit
43	200-25095	Block guide			2		K3
44	000.03135	M6 x 25 zinc socket screw			4		
45	200-25110	Jib cap			2		
46	240.25075	Extended jib (for KMC**E)			1		
47	001.25005	SWL (130 kg [287 lb]) label			2	KMC**E	
48	001.25045	"No Stretcher" label			2	KMC**E	
49	000-03032	M6 x 6 zinc setscrew	After Dec-2013		1		
50	200-25057	M10 x 5 zinc flathead setscrew	After Dec-2013		1		
51	236-25120	Dummy block (for non-scale units KMC*X*)	After Dec-2013		1		K9
52	400-25205	Scale Assembly 500lb	300237360		1	KMC-*A*	K5,K21
53	203-25173	Scale Spacer			1		K5,K21
54	000-25174	M10 x 35 zinc socket screw			2		K5,K20,K21
55	203-25190	Cover plate			1		K5,K21
56	236-25168	Scale Attachment			1		K5,K21

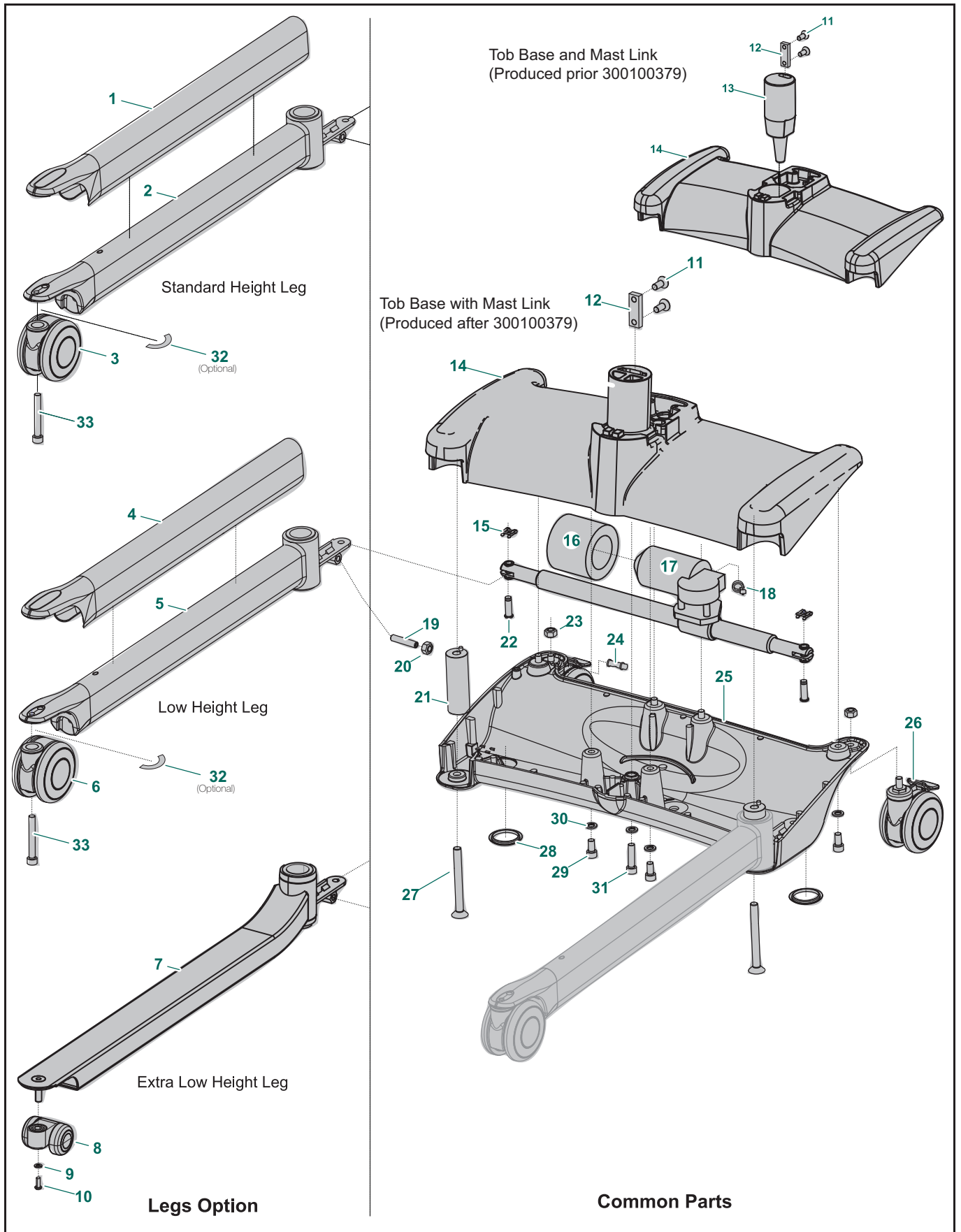
E - Backplate Assembly



Part Designations

E BACKPLATE ASSEMBLY							
Item	Part #	Description	From s/n	To s/n	Qty	Remarks	Kit
1	239.25020	Handle	KMC-00000	KMC-23000	1		K11
			300000000	300100379			K11
	239-25025	Handle	300100379	-			K11
2	200.25045	Slider for handle			1		
3	700.25044	Abridged instructions for clip slings			1	included with Maxi Move	
	700.25047	Abridged instructions for loop slings				included with loop-sling spreader bar	
4	200.25046	Adjustable slider handle			1		
5	KPX00290-00	Slipper			2		
6	204.25042	Adjustment screw slider			1		
7	000.03607	M8 x 16 nylon flat setscrew	KMC-00000	KMC-23000	2		
			300000000	300100379			
	000-03158	M8 x 25 nylon flat setscrew	300100379	-			
8	000-00023	M6 x 12 low zp adhesive socket screw			4		
9	236.25050	Backplate assembly			1		
10	700.13700	ArjoHuntleigh floor lift DPS LCD handset			1		
11	200.24121	Battery support			1		K16
12	000.02501	M4 x 8 zinc pan Torx screw			8		
13	000.02480	4.0 x 12 tap screw			7		
14	200.25052	Control box top	KMC-00000	KMC-23000	1		
			300000000	300100379			
	200-26201	Control box top w/o tag	300100379	-			
15	200.25089	Plastic protection film			1		
16	492-00084-XX	ArjoHuntleigh UMC PCB	KMC-16388	KMC-23000	1	see section H for details	
			300000000	-			
17	492-00066-XX	ArjoHuntleigh UMC PCB	KMC-00000	KMC-16387	1	see section H for details	K17
18	492.00070	PCBA brake board for motor 1	KMC-00000	KMC-16387	1		K17
19	001.00261	Adhesive rubber tape	KMC-00000	KMC-16387	1		K17
20	001.00260	Tape 3M VHB 4952 white 25mm wide	KMC-00000	KMC-16387	1		K17
21	000.01120	Tie wrap mount adhesive 19mm	KMC-00000	KMC-16387	1		K17
22	E0280	Tie wrap 1/8 x 4 black	KMC-00000	KMC-16387	1		K17
23	200.24120	Control box	KMC-00000	KMC-23000	1		
			300000000	300100379			
	200-24301	Control box with handle opening	300100379	-			
24	001.25010	Maxi Move sticker			1		
25	001.24100	Control box membrane			1		
26	8418700	STICKER - ArjoHuntleigh LOGO			1		
27	200.24128	Handset door			1		
28	KKX10730-00	15 A On/Off switch			1		
29	KKX21360-00	Bezel			1		
30	450.00321	Connector with insulating pin			1		
31	000.02100	M3 x 16 zinc flat Phillips screw			2		
32	000.02420	M3 zinc locknut			2		
33	001.13715	Sticker Handset Scale 227kg			1	included with model KMCXAN	
	001.13720	Sticker Handset Scale 130kg				included with model KMCXAE	

F - Leg and Chassis Assembly

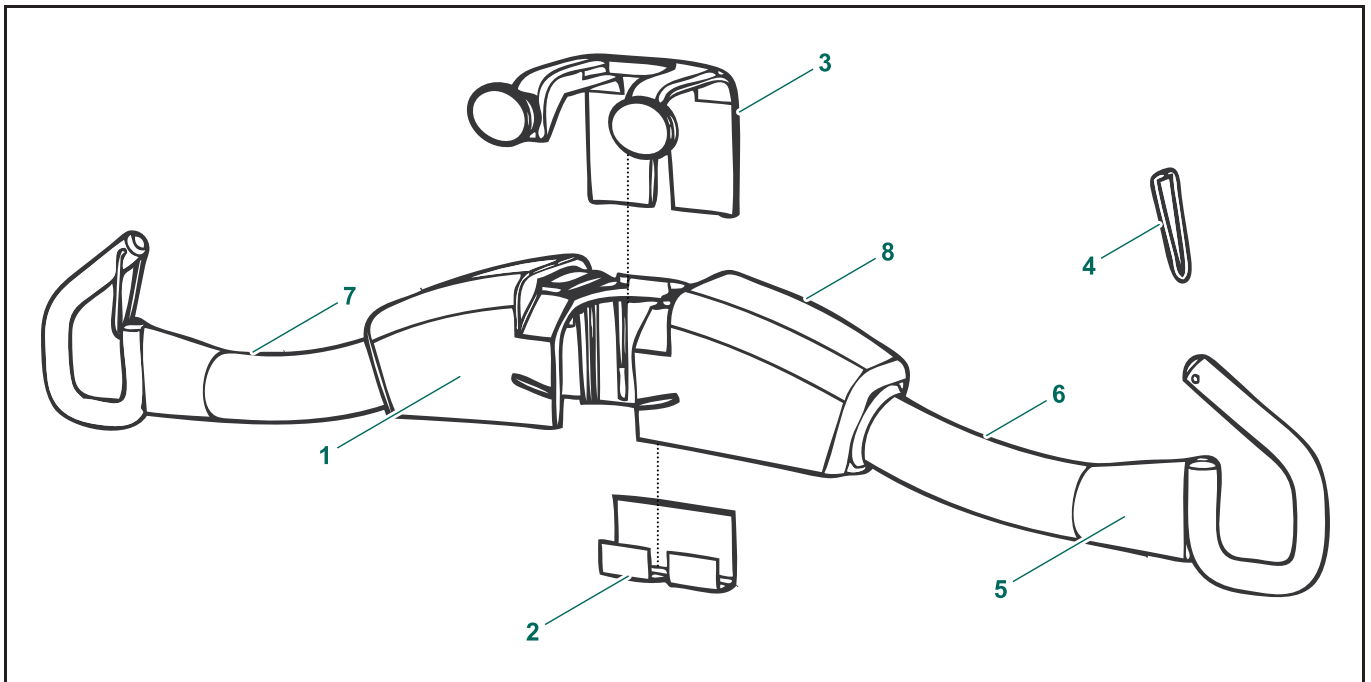


Part Designations

F LEG AND CHASSIS ASSEMBLY							
Item	Part #	Description	From s/n	To s/n	Qty	Remarks	Kit
1	200.25100	Leg cover (for KMCS _{**})			2		
2	700.25000	Leg assembly (for KMCS _{**})			2	includes 2 x 000.25000 pivot bushings	K13
3	000.20480	100 mm light grey swivel wheel (for KMCS _{**})			2		K12, K13
4	200.25101	Low height leg cover (for KMCL _{**})			2		
5	700.25003	Low height leg assembly (for KMCL _{**})			2	includes 2 x 000.25000 pivot bushings	K13
6	000.20475	86 mm light grey swivel wheel (for KMCL _{**})			2		K12, K13
7	700-25105	Extra Low Height Leg (for KMCE _{**})			2	includes 2 x 000.25000 pivot bushings	K13
8	600-25110	49 mm Swivel Wheel (for KMCE _{**})			2		K12, K13
9	000.03420	M6 Zinc Lock Washer			2		
10	000.03105	M6 x 16 Zinc Nutton Head Screw			2		
11	000.04095	M10 x 25 flat zp adhesive screw	KMC-00000	KMC-23000	2		
			300000000	300100379			
	000-25163	M10 x 35 zp flat adhesive screw	300100379	-			
12	203.25082	Mast link plate			1		
13	204.25007	Mast link	KMC-00000	KMC-23000	1		
			300000000	300100379			
14	236.25005	Base top	KMC-00000	KMC-23000	1		
			300100379	300100379			
	236-25175	Base top with mast link	300100379	-			
15	JX68800-00	Safety fastener			2		
16	200.25033	Foam ring			1		
17	KRX10280-00	Doubled-ended actuator			1		K7
18	E0275	Tie wrap black 1/8 x 3 in			1		
19	000.04275	M10 x 50 flat zinc setscrew			2		
20	000.04416	M10 zinc locknut			2		
21	200.25009	Leg pivot assembly			2		
22	200.25059	Leg-opening clevis pin			2		
23	000.04410	M10 zinc locknut			2		
24	200.25087	Directional lock plug	-	KMC14349	1		
25	220.25006	Base bottom			1		
26	000.20485	ø100 mm total-lock grey wheel			2		K19
27	000.04720	M12 x 120 flat zp adhesive screw			2		
28	000.01058	1 3/4 in snap-in black hole plug			2		
29	000.04075	M10 x 20 zinc socket screw			6		
30	000.04425	M10 zinc lockwasher			7		
31	000.04253	M10 x 40 zinc socket screw Adhesive			1		
32	001-25011	Shim			4	Optional	K18
33	001-05111	Bolt M10 X 65 Socket Zinc			2		K18

Part Designations

G1 - KMA82387-24 Two-Point Spreader Bar

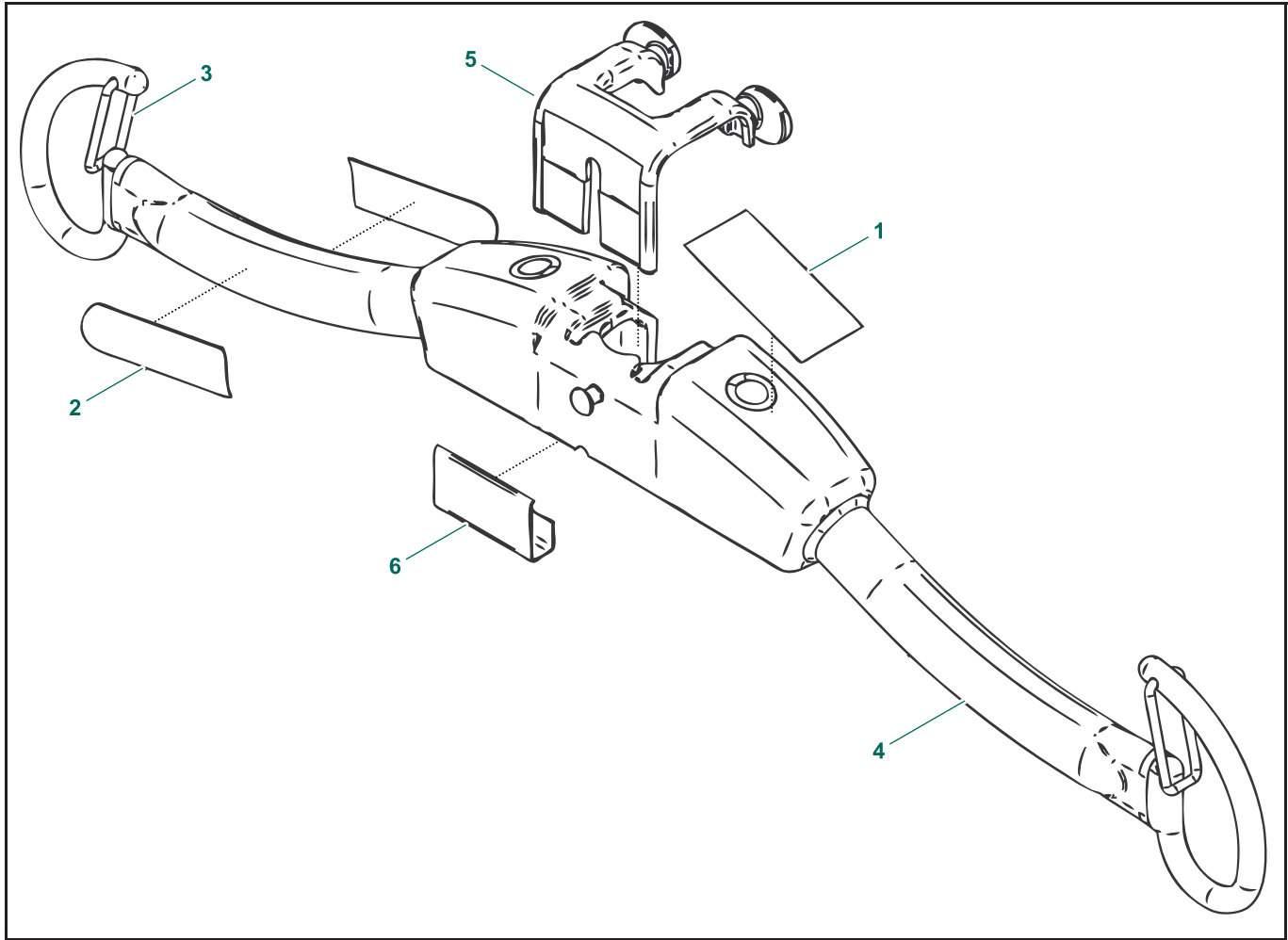


G1 **KMA82387-24 Two-Point Spreader Bar**

Item	Part #	Description	From s/n	To s/n	Qty	Remarks	Kit
1	KMX82385-24	Two-hook spreader bar assembly			1		
2	KPX20430-00	Leaf spring			2		
3	KMX82050-20	Locking clip			1 Pair		
4	LCX81092-00	Safety latch - triangular			1		
	8459263	Safety latch - rectangular					
5	KMX82451-00	200 kg SWL loop sling label			1		
6	8418630	Data label			1		
7	8418640	"May only be used" label			1		
8	8418642	Serial number label			2		

Part Designations

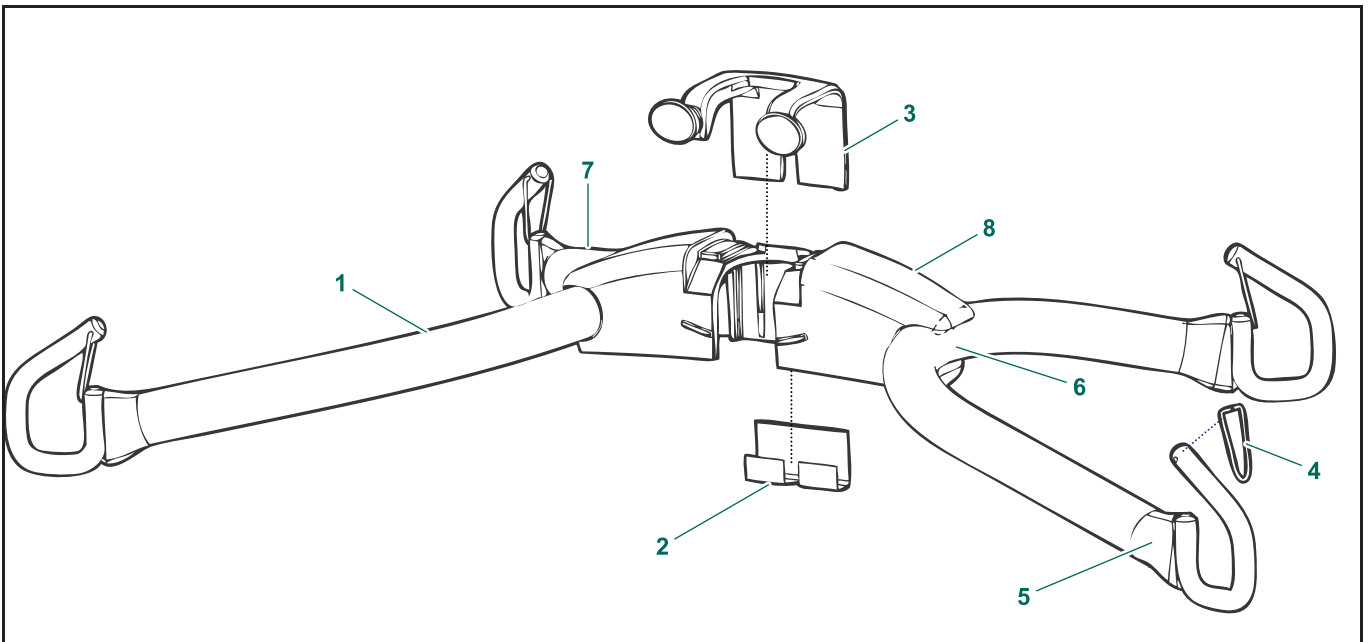
G2 - 700.19326 Two-Point Spreader Bar (227 kg)



G2 700.19326 Two-Point Spreader Bar (227 KG)							
Item	Part #	Description	From s/n	To s/n	Qty	Remarks	Kit
1	001-00164	Product number 700.19326			1		
2	001.19320	Loop sling size label			2		
3	200.05466	Safety latch			2		
4	239.19340	Two-hook spreader bar			1		
5	KMX82050-20	Locking clip			1		
6	KPX20430.0	Leaf spring			1		
-	700.25047	Abridged loop instructions assembly			1		

Part Designations

G3 - KMA82203-24 Four-Point Spreader Bar

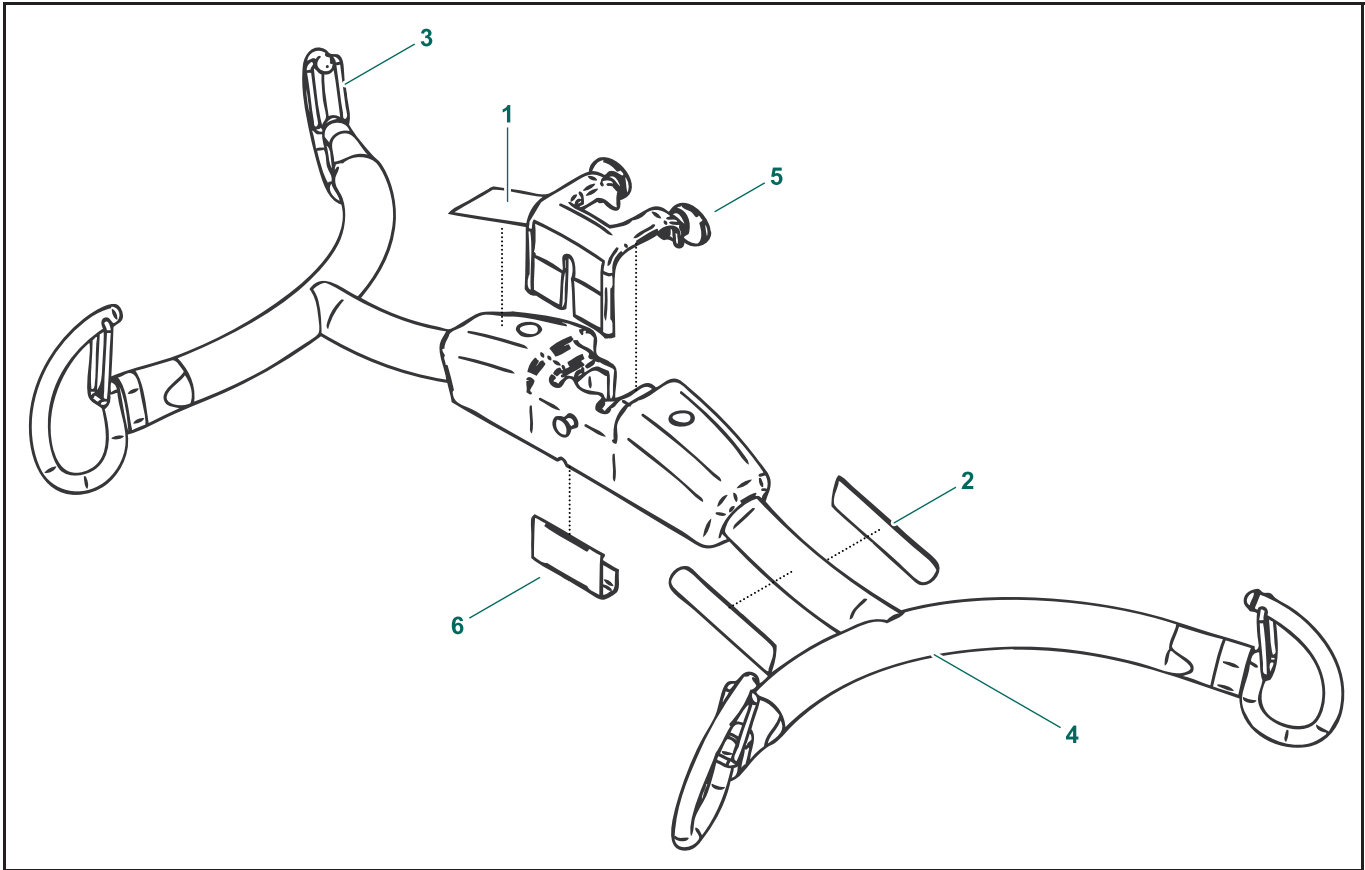


G3 *KMA82203-24 FOUR-POINT SPREADER BAR*

Item	Part #	Description	From s/n	To s/n	Qty	Remarks	Kit
1	KMX82375-XX	Four-hook spreader bar assembly			1		
2	KPX20430-00	Leaf spring			1		
3	KMX82050-20	Locking clip			1		
4	LCX81092-00	Safety latch - triangular			4		
	8459263	Safety latch - rectangular					
5	KMX82451-00	200 kg SWL loop sling label			1 Pair		
6	8418631	Data label			1		
7	8418640	"May only be used" label			1		
8	8414716	Serial number label					

Part Designations

G4 - 700.19331 Combi Four-Point Spreader Bar (227 kg)

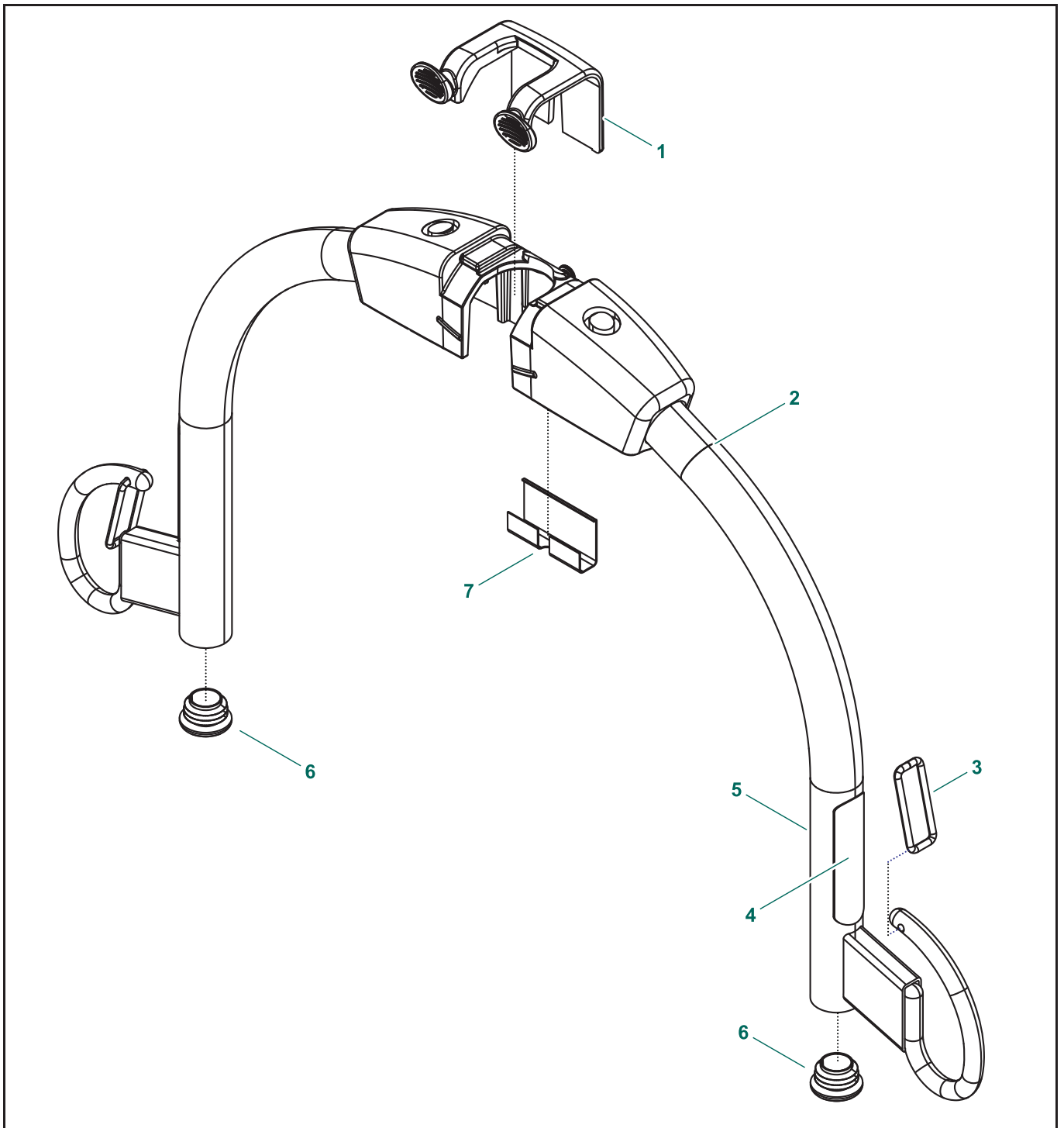


G4 700.19331 COMBI FOUR-POINT SPREADER BAR (227 KG)

Item	Part #	Description	From s/n	To s/n	Qty	Remarks	Kit
1	001-00164	Product number 700.19331			1		
2	001.19320	Loop sling size label			2		
3	200.05466	Safety latch			4		
4	239.19342	Four-hook spreader bar			1		
5	KMX82050-20	Locking clip			1		
6	KPX20430.0	Leaf spring			1		
-	700.25047	Abridged loop instructions assembly			1		

Part Designations

G5 - 700-19303 Loop Medium Combi Spreader Bar (227 kg)

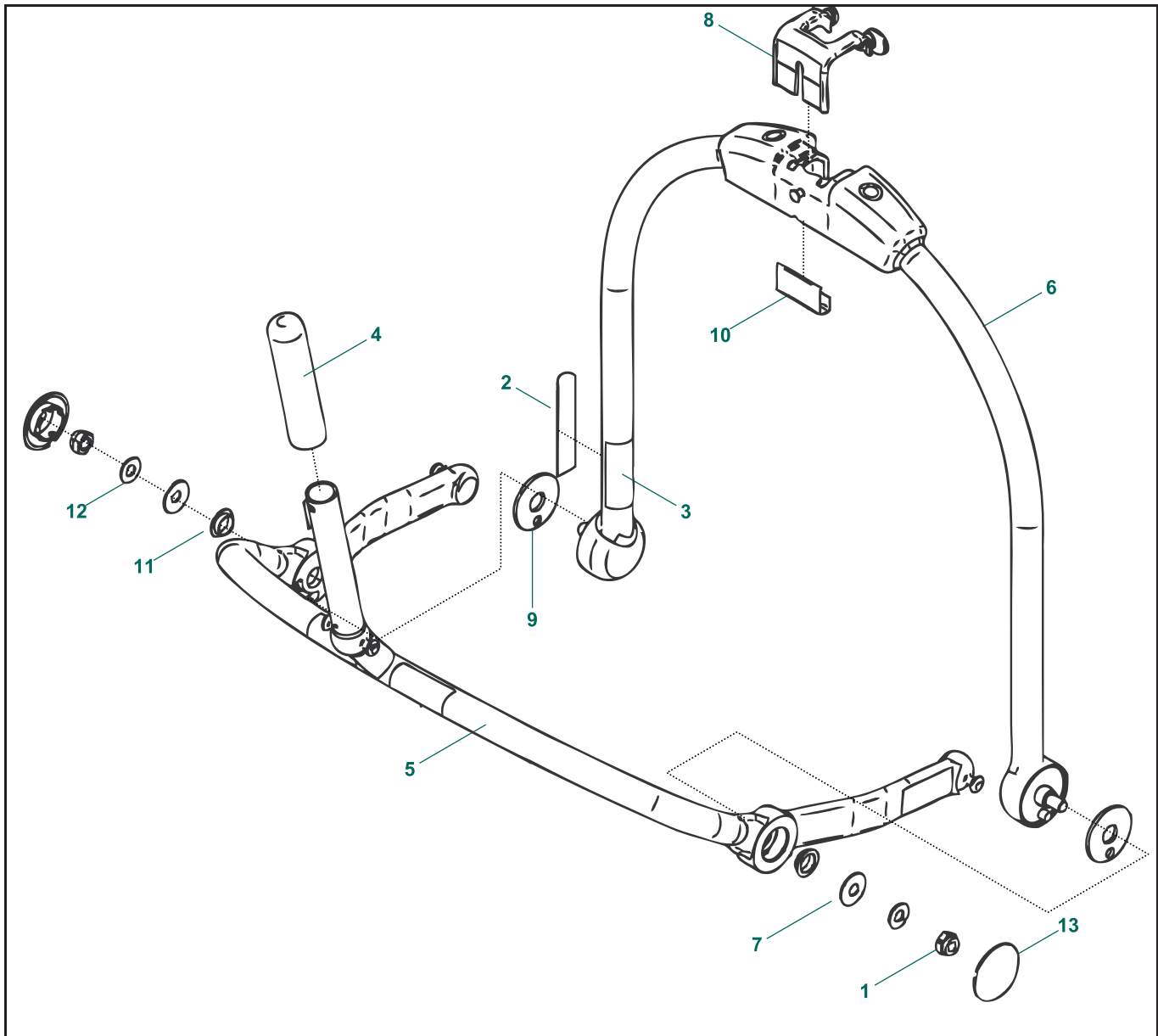


G5 700-19303 LOOP MEDIUM COMBI SPREADER BAR (227 KG)

Item	Part #	Description	From s/n	To s/n	Qty	Remarks	Kit
1	KMX82050-XX	Locking Clip			1		
2	239-19303	Loop Medium Combi Frame			1		
3	200.05466	Safety Latch			2		
4	001-05406	Sticker Sling Size Loop Med			2		
5	001-00613	Product Label 600-19303			1		
6	000-19303	Plastic Plug			2		
7	KPX20430-00	Leaf Spring			1		

Part Designations

G6 - 700.19306 Combi Medium Manual DPS Spreader Bar (227 kg)



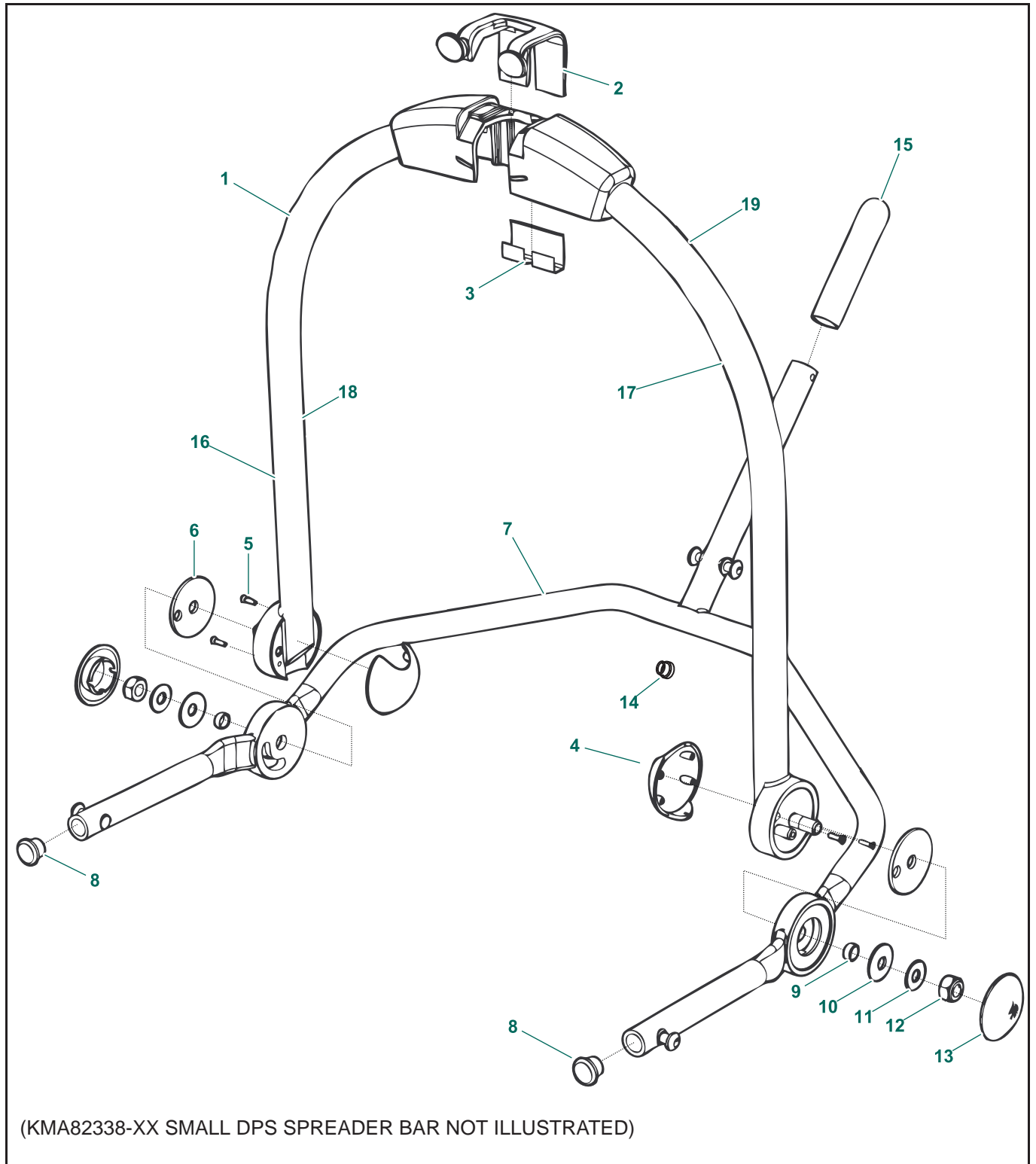
G6 700.19306 COMBI MANUAL DPS MEDIUM SPREADER BAR (227 KG)

Item	Part #	Description	From s/n	To s/n	Qty	Remarks	Kit
1	000.04410	M10 zp locknut			2		
2	001.19310	Medium DPS sling size label			2		
3	001.19333	700.19306 product number label			1		
4	200.19320	DPS handle			1		
5	239-19409	Manual DPS medium lower frame			1		
6	239-19410	Manual DPS medium upper frame			1		
7	GX20460.0	Disk spring washer			2		
8	KMX82050-20	Locking clip			1		
9	KMX82671-00	Friction disk			2		
10	KPX20430.0	Leaf spring			1		
11	KPX67540.0	16-18 X 6 flange bushing			2		
12	MX01450.0	Washer			2		
13	MX01460.20	Plastic cap (grey)			2		

Part Designations

G7 - KMA82338-XX* Small Manual DPS Spreader Bar

G8 - KMA82159-24 Medium Manual DPS Spreader Bar



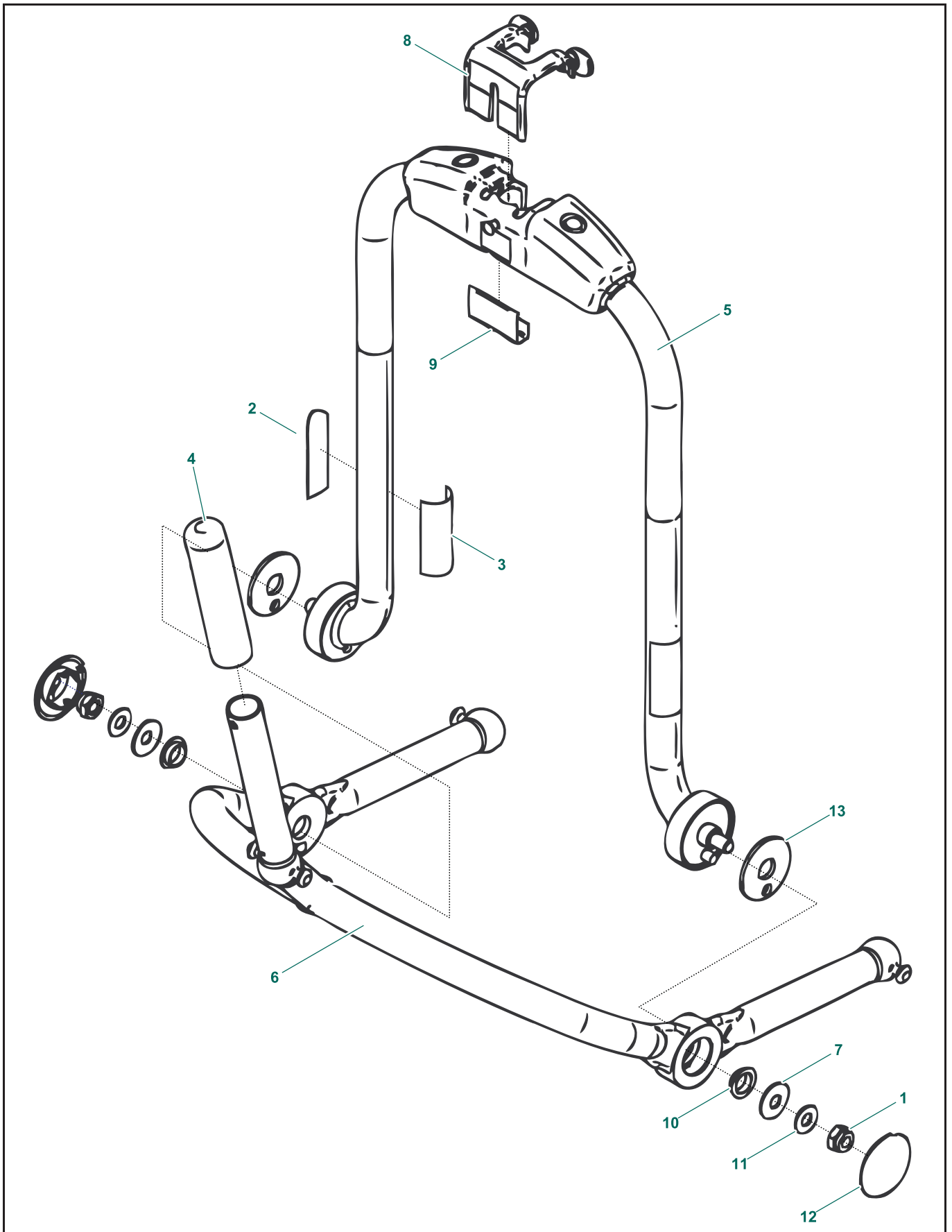
Part Designations

G7 KMA82338-XX* SMALL MANUAL DPS SPREADER BAR G8 KMA82159-24 MEDIUM MANUAL DPS SPREADER BAR							
Item	Part #	Description	From s/n	To s/n	Qty	Remarks	Kit
1	KMX82365-XX	Combi lift support-small (not illustrated)			1		
	KMX82158-24	Combi lift support-medium					
2	KMX82050-20	Locking clip			1		
3	KPX20430.0	Leaf spring			1		
4	KMX82129-20	End cap			2		
5	KLX01830.0	3x12 screw			4		
6	KMX82671-00	Friction washer			2		
7	KMX82360-XX	Lift frame assembly-small (not illustrated)			1		
	KMX82317-24	Lift frame assembly-medium					
8	KPX20310.0	End plug			2		
9	KPX67540.0	Bush			2		
10	GX50460.0	Washer disc spring			2		
11	MX01450.0	Washer			2		
12	AX01201.0	Nut M10 nyloc type			2		
13	MX01460.20	Cap			2		
14	KMX01080.0	Plug			1		
15	KPX20100.20	Hand grip			1		
16	KMX82450-00	125 kg SWL label (KMA82338)			1 pair		
	KMX82444-00	228 kg SWL label (KMA82159)					
17	8418633	Data label-KMA82338			1		
	8418635	Data label-KMA82159					
18	8418640	"May only be used" label			1		
19	8414716	Serial number label			1		

Note: -XX in listed part number refers to color code suffix: 24 = Cache (light) Blue, 31 = Dark Blue

Part Designations

G9 - 700.19301 Small Manual DPS Spreader Bar (227 kg)



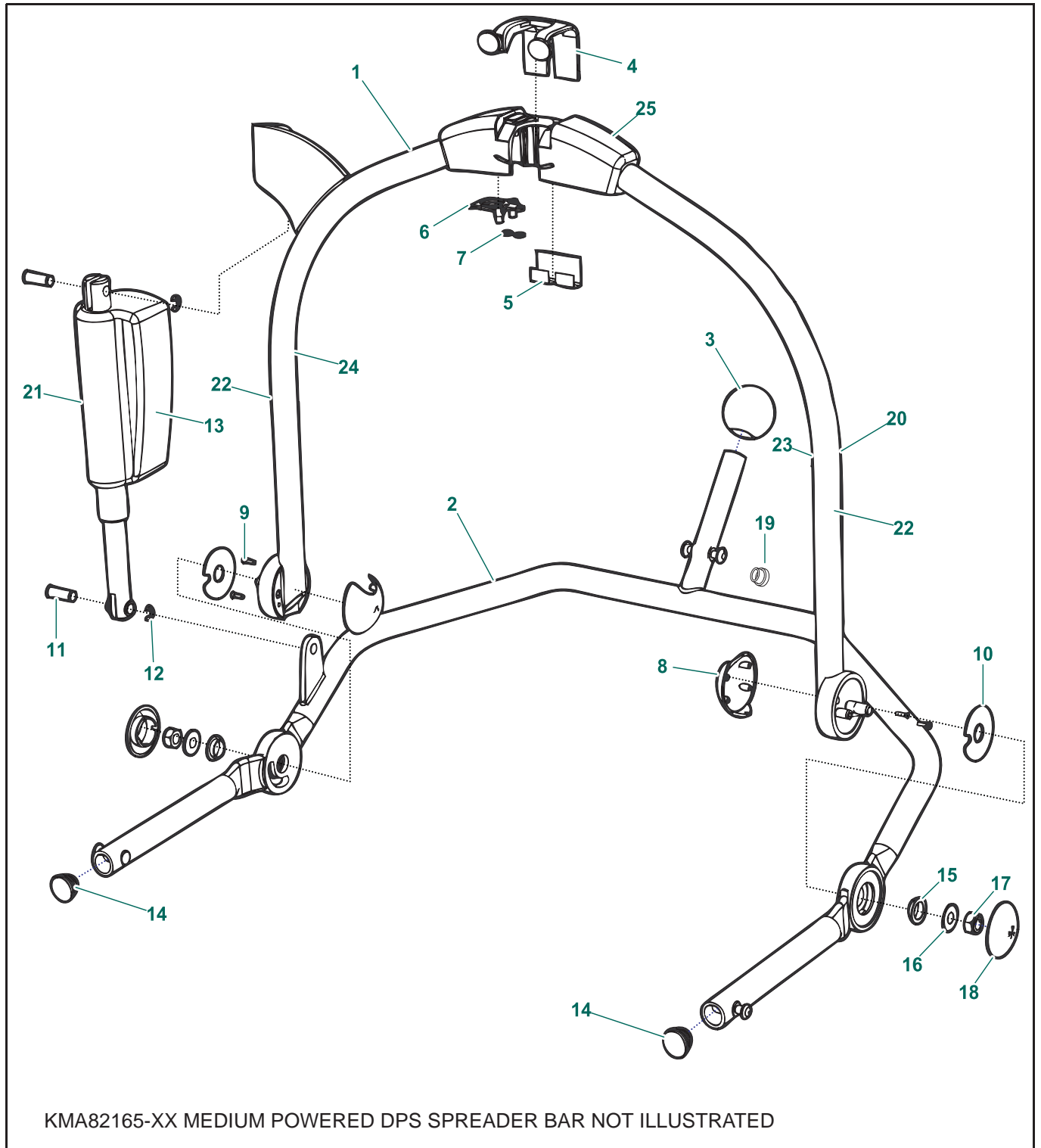
Part Designations

G9 700.19301 SMALL MANUAL DPS SPREADER BAR (227 KG)							
Item	Part #	Description	From s/n	To s/n	Qty	Remarks	Kit
1	000.04410	M10 zp locknut			2		
2	001.19305	Small DPS sling size label			2		
3	001.19331	700.19301 product number label			1		
4	200.19320	DPS handle			1		
5	239.19312	Combi manual DPS small upper frame			1		
6	239.19314	Combi manual DPS small lower frame			1		
7	GX20460.0	Disk spring washer			2		
8	KMX82050-20	Locking clip			1		
9	KPX20430.0	Leaf spring			1		
10	KPX67540.0	16-18 X 6 flange bushing			2		
11	MX01450.0	Washer			2		
12	MX01460.20	Plastic cap (grey)			2		
13	KMX82671-00	Friction disk			2		

Part Designations

G10 - KMA82165-24 Medium Powered DPS Spreader Bar

G11 - KMA82205-31 Large Powered DPS Spreader Bar



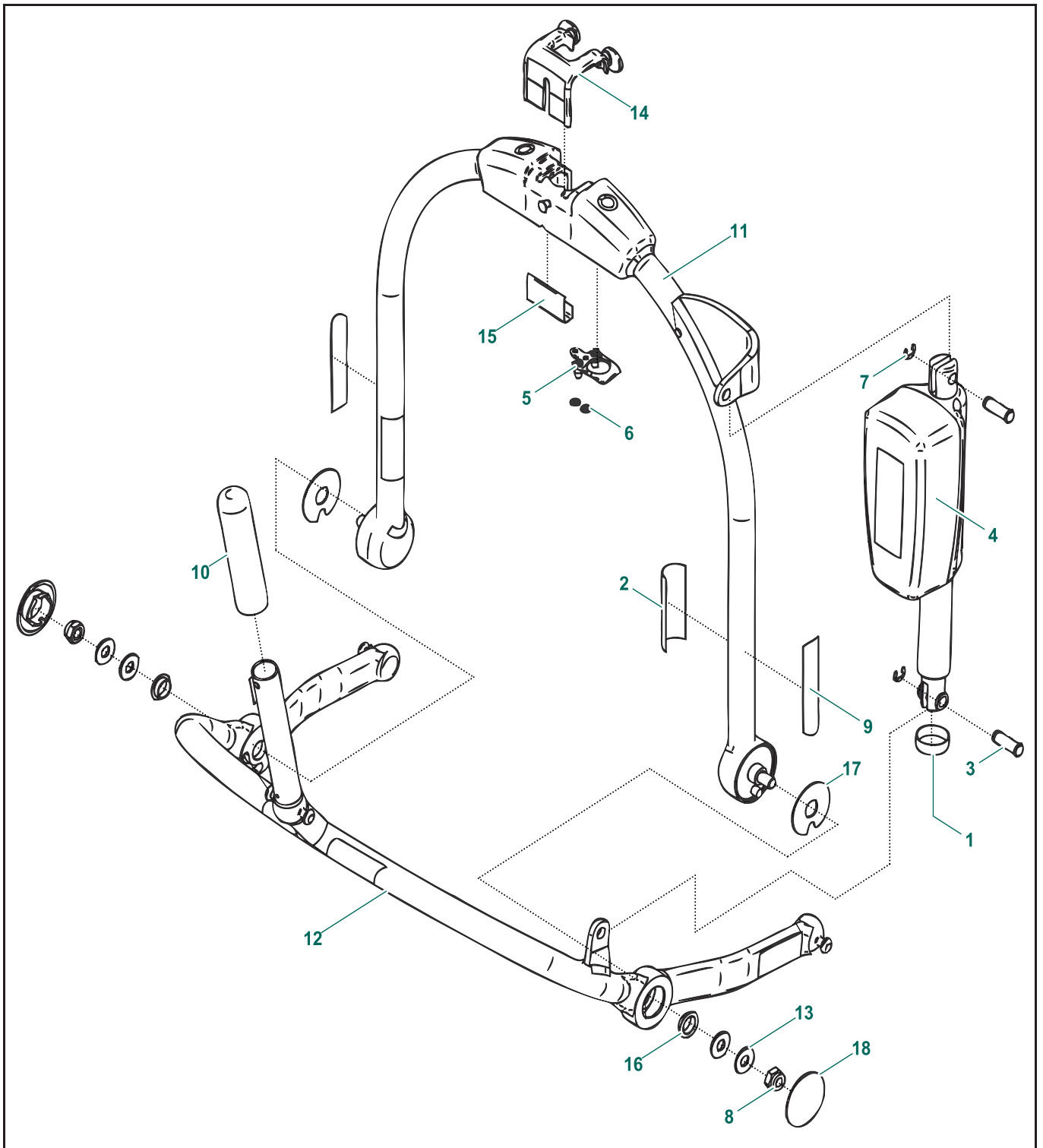
Part Designations

G10 KMA82165-24 MEDIUM POWERED DPS SPREADER BAR **G11 KMA82205-31 LARGE POWERED DPS SPREADER BAR**

Item	Part #	Description	From s/n	To s/n	Qty	Remarks	Kit
1	KMX82163-24	Combi powered DPS-medium (not illustrated)			1		
	KMX82281-31	Combi powered DPS-large					
2	KMX82329-24	Frame powered DPS-medium (not illustrated)			1		
	KMX82350-31	Frame powered DPS-large					
3	KPX67120.20	Knob			1		
4	KMX82050-20	Locking clip			1		
5	KPX20430.0	Leaf spring			1		
6	KMX82160-00	Combi pick-up assembly			1		
7	KMX82164-00	Fastener			2		
8	KMX82129-20	End cap			2		
9	KLX01830.0	3 x12 screw			4		
10	KPX67640.0	Friction washer			2		
11	KPX67200.0	Pin			2		
12	KPX67210.0	E-clip			2		
13	KMX82154-00	Actuator			1		
14	KPX20310.0	End plug-medium			2		
	KTX05210.0	End plug-large					
15	KPX67540.0	Bush			2		
16	AX05700.0	Washer M10			2		
17	AX01201.0	Nut M10 nyloc type			2		
18	MX01460.20	Cap			2		
19	KMX01080.0	Plug			1		
20	LBX05550.0	"Wet environment" label			1		
21	KMX82687-00	Heat shrink tubing			1		
22	KMX82446-00	Label SWL 228 kg			1 Pair		
	KMX82444-00	Label SWL 228 kg					
23	8418634	Data label			1		
24	8418640	"May only be used" label			1		
25	8414716	Serial number label			1		

Part Designations

G12 - 700.19311 Combi Medium Powered DPS Spreader Bar (227 kg)



Part Designations

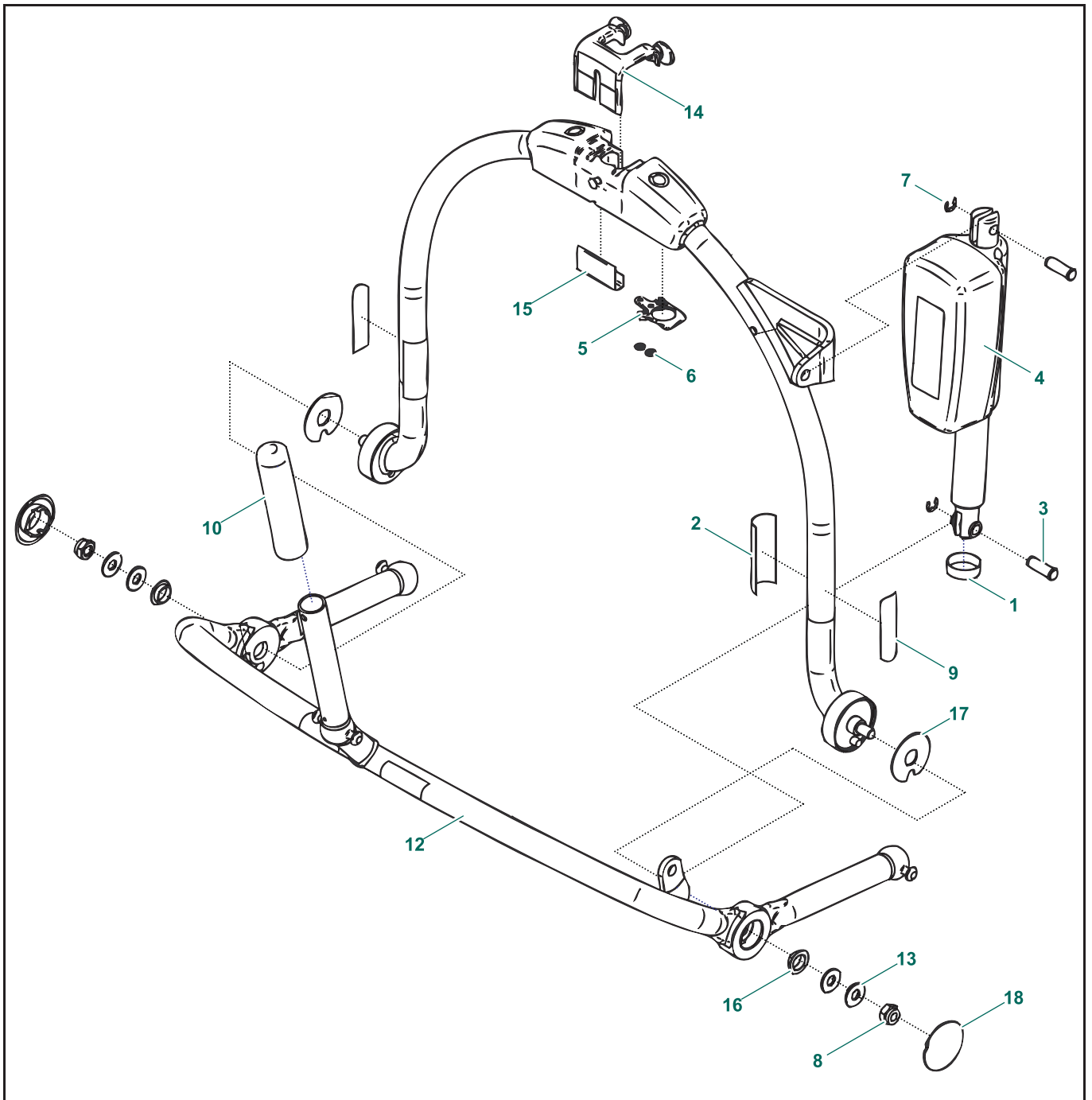
G12 700.19311 COMBI MEDIUM DPS POWERED SPREADER BAR (227 KG)

Item	Part #	Description	From s/n	To s/n	Qty	Remarks	Kit
1	001.19300	DPS water level label			1		
2	001.19335	700.19311 product number label			1		
3	200.19348	Actuator pin			2		
4	400.19300	DPS actuator			1		
5	KMX82160-00	Combi pickup assembly			1		
6	KMS82164-00	3 mm starlock			2		
7	KPX67210.0	E-clip D1500-0070			2		
8	000.04410	M10 zp locknut			2		
9	001.19310	Medium DPS sling size label			2		
10	200.19320	1" grey hand grip			1		
11	239-19365	Powered DPS medium upper frame			1		**
12	239-19370	Powered DPS medium lower frame			1		**
13	AX05700.0	M10 st/st washer (form C)			4		
14	KMX82050-20	Locking clip			1		
15	KPX20430.0	Leaf spring			1		
16	KPX67540.0	16-18 X 6 flange bushing			2		
17	KPX67640.0	Nylon friction washer			2		
18	MX01460.20	Plastic cap (grey)			2		

**Sellable only through kit 700-19311-BOX

Part Designations

G13 - 700.19316 Combi Large Powered DPS Spreader Bar (227 kg)

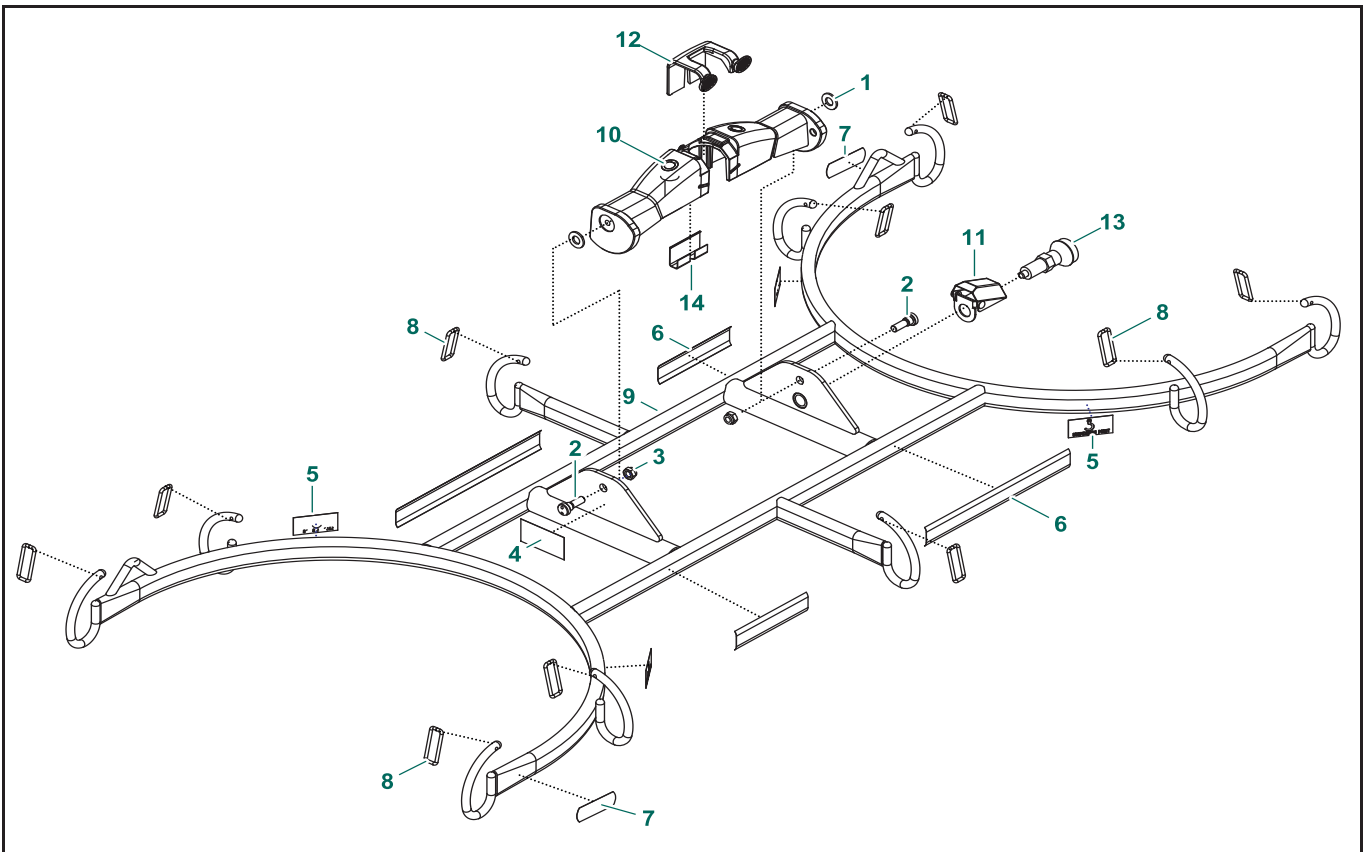


Part Designations

G13 700.19316 COMBI LARGE POWERED DPS SPREADER BAR (227 KG)							
Item	Part #	Description	From s/n	To s/n	Qty	Remarks	Kit
1	001.19300	DPS water level label			1		
2	001.19337	700.19316 product number label			1		
3	200.19348	Actuator pin			2		
4	400.19300	DPS actuator			1		
5	KMX82160-00	Combi pickup assembly			1		
6	KMS82164-00	3 mm starlock			2		
7	KPX67210.0	E-clip D1500-0070			2		
8	000.04410	M10 zp locknut			2		
9	001.19315	Large DPS sling size label			2		
10	200.19320	1" grey hand grip			1		
11	239.19331	Powered DPS medium upper frame			1		
12	239.19336	Powered DPS medium lower frame			1		
13	AX05700.0	M10 st/st washer (form C)			4		
14	KMX82050-20	Locking clip			1		
15	KPX20430.0	Leaf spring			1		
16	KPX67540.0	16-18 X 6 flange bushing			2		
17	KPX67640.0	Nylon friction washer			2		
18	MX01460.20	Plastic cap (grey)			2		

Part Designations

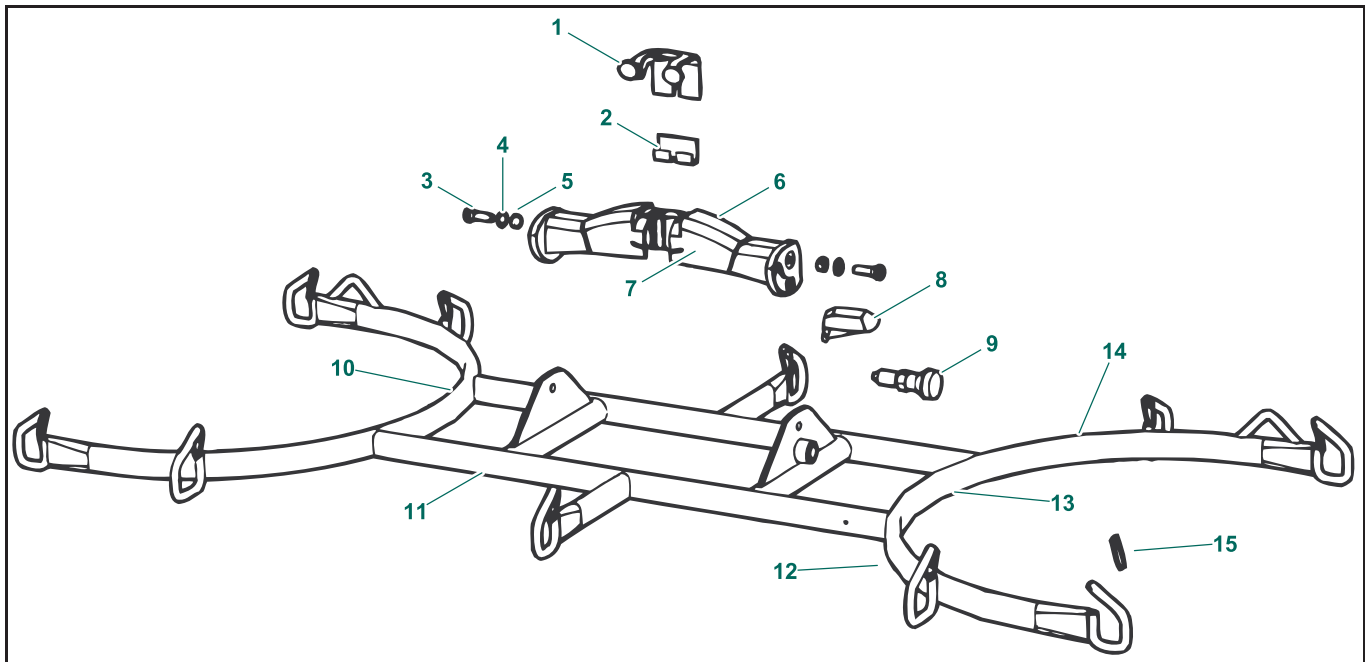
G14 - 700-19302 Stretcher Frame (160 kg)



G14 700-19302 STRETCHER FRAME (160 KG)							
Item	Part #	Description	From s/n	To s/n	Qty	Remarks	Kit
1	000-00474	Washer			2		
2	000-00626	Bolt Shoulder			2		
3	000.03800	Locknut M8 Zinc			2		
4	001-00302	Label Product 600-19302			1		
5	001-05456	Hook Label			4		
6	001-25092	Label Stretcher Use			2		
7	001-25113	Stretcher Sling Sizes Label			2		
8	200.05466	Safety Latch			10		
9	239-19201	Stretcher Foldable Frame			1		
10	239-19202	Maxi Move Stretcher Attachment			1		
11	600-19450	Stretcher Cover Assembly			1		
12	KMX82050-20	Locking Clip			1		
13	KMX82393-00	Spring Loaded Index Bolt			1		
14	KPX20430-00	Leaf Spring			1		

Part Designations

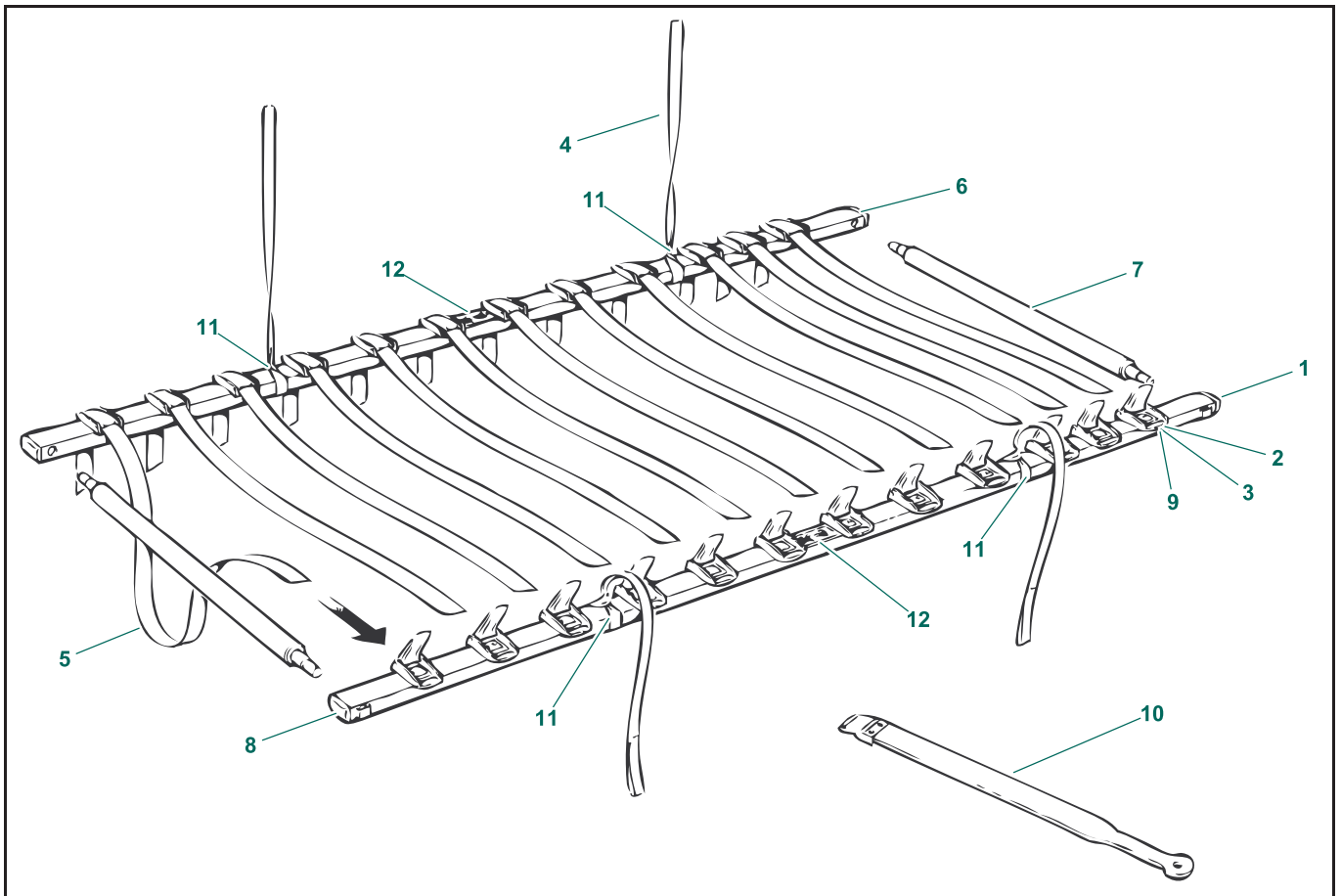
G15 - KMA82334 Stretcher Frame



G15		KMA82334 STRETCHER FRAME					
Item	Part #	Description	From s/n	To s/n	Qty	Remarks	Kit
1	KMX82050-20	Locking clip			1		
2	KPX20430.0	Leaf spring			1		
3	KMX82432-00	Bolt shoulder			2		
4	KMX82436-00	Nylon Washer			2		
5	6210044	M8 Nyloc nut			2		
6	KMX82439-XX	Locking attachment			1		
7	8414716	Serial number label			1		
8	KMX82681-xx	Cover assembly			1		
9	KMX82393-00	Locking bolt			1		
10	8418640	"May only be used" label			1		
11	KMX82452-00	160 kg SWL label			1		
12	KMX00260.0	Sling position label			4		
13	8418632	Data label			1		
14	KMX82455-XX	Folding frame			1		
15	8459263	Rectangular retaining clip			10		

Part Designations

G16 - KMA1003-20 Strap Stretcher



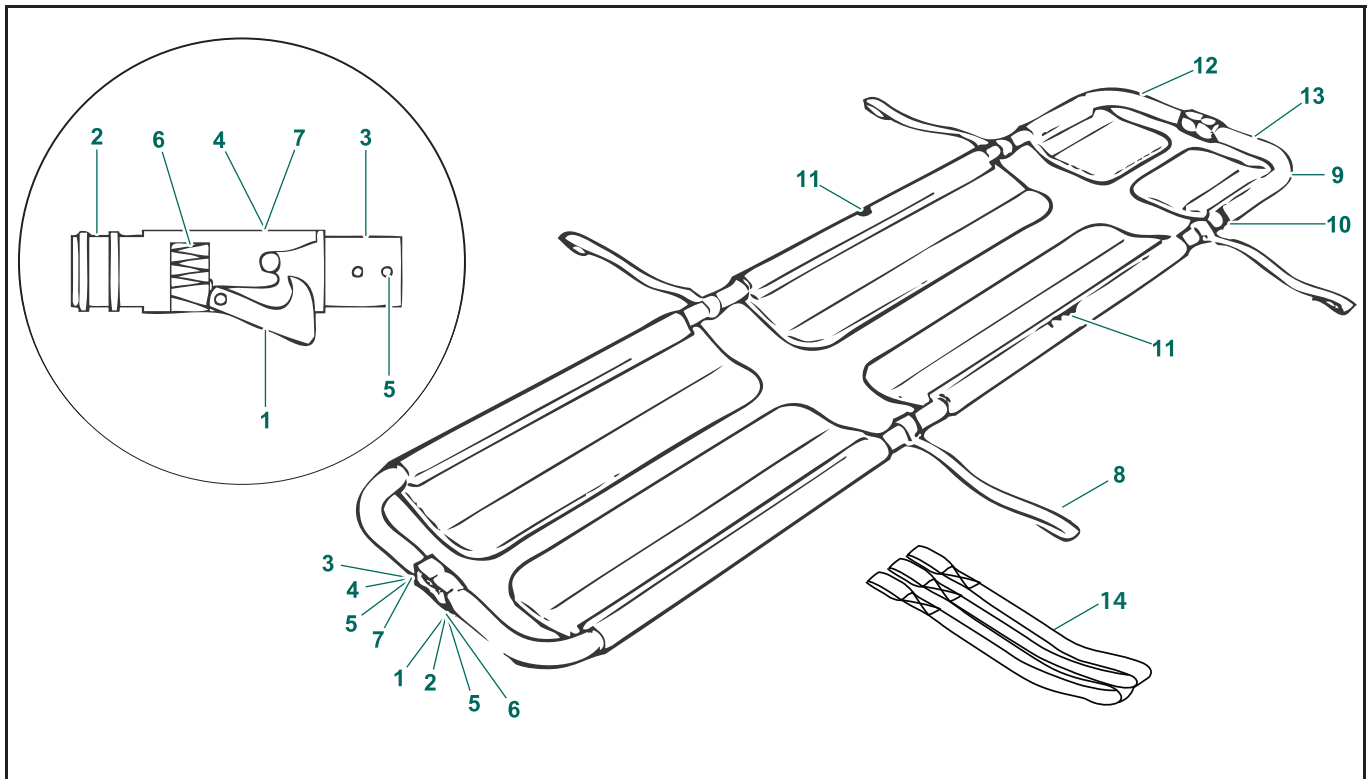
G16

KMA1003-20 STRAP STRETCHER

Item	Part #	Description	From s/n	To s/n	Qty	Remarks	Kit
1	KMX00091.20	Buckle section-right			1		
2	KMX00100.0	Buckle plate			24		
3	KMX00110.0	Buckle			24		
4	KMX00120.0	Hanging strap			4		
5	KMX00131.0	Cross strap			24		
6	KMX00161.20	Buckle section-left			1		
7	KMX00180.20	End tube			2		
8	KMX00210.0	Plug			4		
9	KMX00200.0	Rivet			48		
10	KMX00580.0	Strap guide			1		
11	KMX00260.0	Sling position label			4		
12	KMX00270.0	Body position label			2		
13	8418640	"May only be used" label			1		
14	8414716	Serial number label			1		
15	8418639	Data label			1		

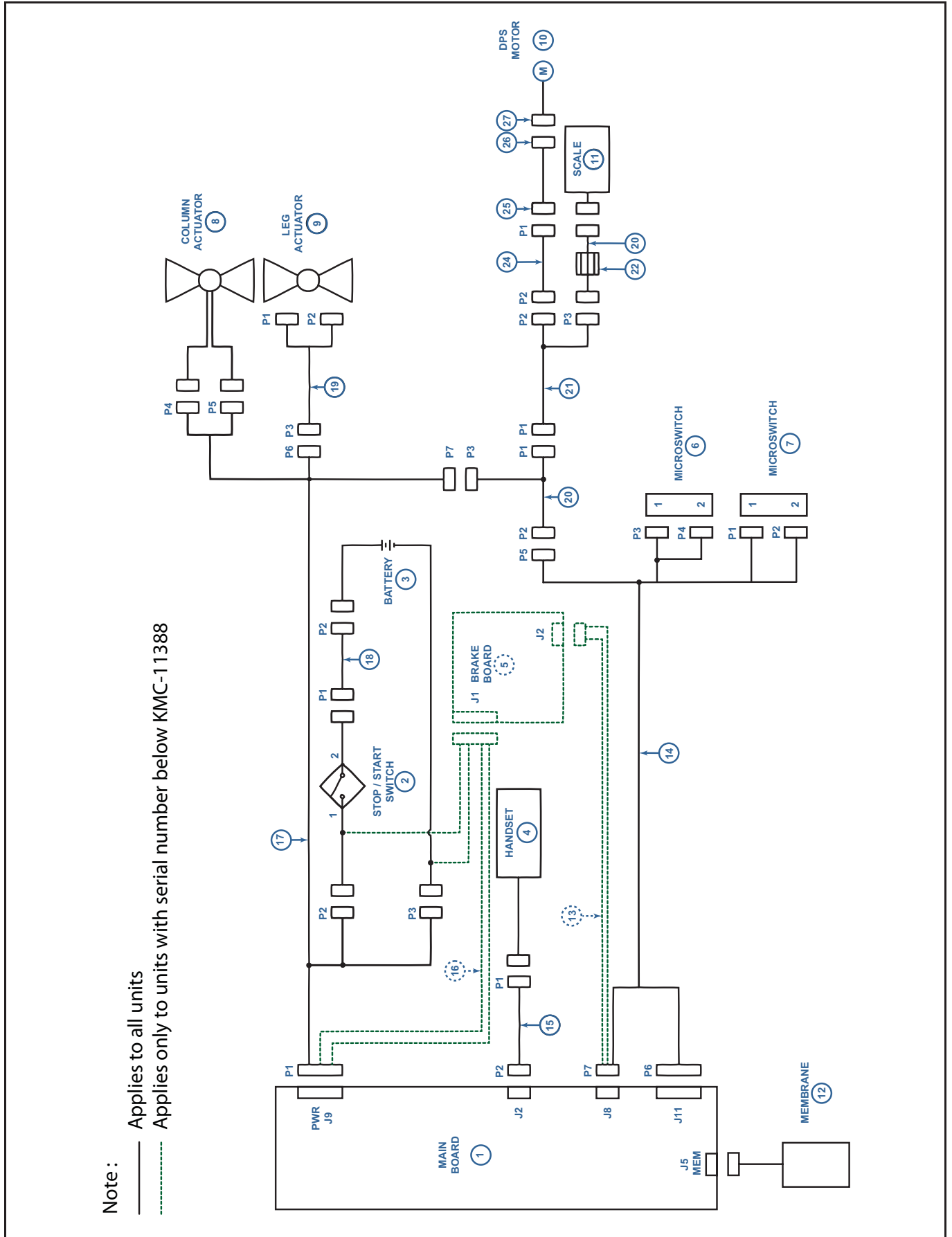
Part Designations

G17 - KRA2210-20 Scoop Stretcher



G17 KRA2210-20 SCOOP STRETCHER							
Item	Part #	Description	From s/n	To s/n	Qty	Remarks	Kit
1	KRX25090.0	Moving latch			2		
2	KRX25100.0	Static latch			2		
3	KRX25110.0	Fork latch			2		
4	KRX25120.0	Pin			2		
5	KRX25140.0	Spiral pin			10		
6	KRX25150.0	Spring			2		
7	MX04200.0	Circlip			2		
8	KMX00120.0	Hanging strap			4		
9	8418640	"May only be used" label			1		
10	KMX00260.0	Sling position label			4		
11	KMX00270.0	Body position label			2		
12	8414716	Serial number label					
13	8418638	Data label					
14	354-05403	W Style Strap				Optional	
	700-05403					2 straps kit (optional)	

H - Electrical Wiring Diagram



Part Designations

H ELECTRICAL WIRING DIAGRAM							
Item	Part #	Description	From s/n	To s/n	Qty	Remarks	Kit
1	492-00066-01	UMC PCB for KMC*UN & KMC*XN	KMC-00000	KMC-16387	1	See note	
	492-00066-02	UMC PCB for KMC*XE					
	492-00066-33	UMC PCB for KMC*AN					
	492-00066-34	UMC PCB for KMC*AE					
	492-00084-01	UMC PCB for KMC*UN & KMC*XN	KMC-16388	KMC-23000	1	See note	
	492-00084-02	UMC PCB for KMC*XE					
	492-00084-33	UMC PCB for KMC*AN					
	492-00084-34	UMC PCB for KMC*AE					
	492-00084-01	UMC PCB for KMC*UN & KMC*XN	300000000	-		See note	
	492-00084-02	UMC PCB for KMC*XE					
	492-00084-33	UMC PCB for KMC*AN					
	492-00084-34	UMC PCB for KMC*AE					
2	KKX10730-00	15 A On/Off switch			1		
3	NDA0100-20	Battery Pack			1	obsolete	
	NDA0200-20						
4	700.13700	ArjoHuntleigh floor lift DPS LCD handset			1		
5	492.00070	PCBA brake board	KMC-00000	KMC-16387	1	See note 1	
6	460-25020	Microswitch			1		
7	600-25345	Mounted micro switch panel			1		
8	400-25000	Actuator assembly			1		
9	KRX10280-00	Double-ended actuator			1		
10	KMX82154-00	Actuator			1		
11	200.25200	Single-point load cell	KMC-00000	KMC-23000	1	KMC-*A*	
			300000000	300237359			
11	200-25255-US	Single-point load cell - US			1	KMC-*U*	K5
11	400-25205	Scale Assembly 500lb	300237360		1	KMC-*A*	K5, K20
12	001.24100	Control box membrane			1		
13	402.25035	Motor brake control cable	KMC-00000	KMC-16387	1	See note 1	
14	402.25010	Limit switches harness			1		
15	402.25020	Handset/UMC interface harness			1		
16	402.25030	Motor brake cable	KMC-00000	KMC-16387			
17	402.25005	Motor harness			1		
18	402.25015	Fuse holder cable (contains 15 A AGC fuse #C8FAGC15)			1		
19	402.25025	Actuator wire harness			1		
20	402.25001	Mast short coil cable	KMC-00000	KMC-02999	1		K15
	402-25007	Mast short coil cable ESD	KMC-03000	KMC-23000			
			300000000	-			
21	402.25000	Flexible cable for standard jib (for KMC**N)	KMC-0000	KMC-02999	1		K15
	402.25002	Flexible cable for extended jib (for KMC**E)					
	402-25004	Flexible cable for standard jib (for KMC**N)	KMC-03000	KMC-23000			
	402-25006	Flexible cable for extended jib (for KMC**N)					
	402-25004	Flexible cable for standard jib (for KMC**N)	300000000	-			
402-25006	Flexible cable for extended jib (for KMC**N)						
22	405.20801	28A2024-0A0 ferrite			1		
23	402.25040	Scale signal cable extension			1		
24	402-25027	Combi interface wire harness			1		
25	402-25028	T-Bar Socket			1		
26	KMX82161-00	Pickup assembly			1		
27	KMX82160-00	Combi pickup assembly			1		

Note: Replaced by kit K17

Part Designations

Preventative Maintenance Replacement Parts

Preventive Maintenance Parts	Part number	Number of Maxi Move units		Page
		1	5	
Band replacement kit	700-25306	1	5	7

Recommended Spares

Recommended Spares	Part number	Number of Maxi Move units		Page
		1	5	
Battery Pack	NDA0100-20	1	2	9
ArjoHuntleigh floor lift DPS LCD handset	700.13700	1	2	16
15 amp On/Off switch	KKX10730-00	1	2	16
15A AGC fuse	C8FAGC15	2	4	40
Control box membrane	001.24100	1	2	16

INTENTIONALLY LEFT BLANK

AUSTRALIA

ArjoHuntleigh Pty Ltd
78, Forsyth Street
O'Connor
AU-6163 Western Australia
Tel: +61 89337 4111
Free: +1 800 072 040
Fax: + 61 89337 9077

BELGIQUE / BELGIË

ArjoHuntleigh NV/SA
Evenbroekveld 16
BE-9420 ERPE-MERE
Tél/Tel: +32 (0) 53 60 73 80
Fax: +32 (0) 53 60 73 81
E-mail: info.belgium@arjohuntleigh.be

BRASIL

Maquet do Brasil
Equipamentos Médicos Ltda
Rua Tenente Alberto Spicciati, 200
Barra Funda, 01140-130
SÃO PAULO, SP - BRASIL
Fone: +55 (11) 2608-7400
Fax: +55 (11) 2608-7410

CANADA

ArjoHuntleigh
90 Matheson Boulevard West
Suite 300
CA-MISSISSAUGA, ON, L5R 3R3
Tel/Tél: +1 905 238 7880
Free: +1 800 665 4831 Institutional
Free: +1 800 868 0441 Home Care
Fax: +1 905 238 7881
E-mail: info.canada@arjohuntleigh.com

ČESKÁ REPUBLIKA

ArjoHuntleigh s.r.o.
Hlinky 118
CZ-603 00 BRNO
Tel: +420 549 254 252
Fax: +420 541 213 550

DANMARK

ArjoHuntleigh A/S
Vassingerødvej 52
DK-3540 LYNGE
Tel: +45 49 13 84 86
Fax: +45 49 13 84 87
E-mail: dk_kundeservice@arjohuntleigh.com

DEUTSCHLAND

ArjoHuntleigh GmbH
Peter-Sander-Strasse 10
DE-55252 MAINZ-KASTEL
Tel: +49 (0) 6134 186 0
Fax: +49 (0) 6134 186 160
E-mail: info-de@arjohuntleigh.com

ESPAÑA

ArjoHuntleigh Ibérica S.L.
Ctra. de Rubí, 88 1ª planta - A1
08173 Sant Cugat del Vallés
ES- BARCELONA 08173
Tel: +34 93 583 11 20
Fax: +34 93 583 11 22
E-mail: info.es@arjohuntleigh.com

FRANCE

ArjoHuntleigh SAS
2 Avenue Alcide de Gasperi
CS 70133
FR-59436 RONCQ CEDEX
Tél: +33 (0) 3 20 28 13 13
Fax: +33 (0) 3 20 28 13 14
E-mail: info.france@arjohuntleigh.com

HONG KONG

Getinge Group Hong Kong Ltd
1510-17, 15/F, Tower 2
Kowloon Commerce Centre
51 Kwai Cheong Road
Kwai Chung
HONG KONG
Tel: +852 2207 6363
Fax: +852 2207 6368

ITALIA

ArjoHuntleigh S.p.A.
Via Giacomo Peroni 400-402
IT-00131 ROMA
Tel: +39 (0) 6 87426211
Fax: +39 (0) 6 87426222
E-mail: Italy.promo@arjohuntleigh.com

MIDDLE EAST

Getinge Group Middle East
Office G005 - Nucleotide Complex,
Dubai Biotechnology & Research Park,
P.O.Box 214742, Dubai,
United Arab Emirates
Tel: +971 (0)4 447 0942
E-mail: Info.ME@getinge.com

NEDERLAND

ArjoHuntleigh Nederland BV
Biezenwei 21
4004 MB TIEL
Postbus 6116
4000 HC TIEL
Tel: +31 (0) 344 64 08 00
Fax: +31 (0) 344 64 08 85
E-mail: info.nl@arjohuntleigh.com

NEW ZEALAND

ArjoHuntleigh Ltd
41 Vestey Drive
Mount Wellington
NZ-AUCKLAND 1060
Tel: +64 (0) 9 573 5344
Free Call: 0800 000 151
Fax: +64 (0) 9 573 5384
E-mail: nz.info@ArjoHuntleigh.com

NORGE

ArjoHuntleigh Norway AS
Olaf Helsets vei 5
N-0694 OSLO
Tel: +47 22 08 00 50
Faks: +47 22 08 00 51
E-mail: no.kundeservice@arjohuntleigh.com

ÖSTERREICH

ArjoHuntleigh GmbH
Dörrstrasse 85
AT-6020 INNSBRUCK
Tel: +43 (0) 512 204 160 0
Fax: +43 (0) 512 204 160 75

POLSKA

ArjoHuntleigh Polska Sp. z o.o.
ul. Ks Piotra Wawrzyniaka 2
PL-62-052 KOMORNIKI (Poznań)
Tel: +48 61 662 15 50
Fax: +48 61 662 15 90
E-mail: arjo@arjohuntleigh.com

PORTUGAL

ArjoHuntleigh em Portugal
MAQUET Portugal, Lda. (Distribuidor Exclusivo)
Rua Poeta Bocage n.º 2 - 2G
PT-1600-233 Lisboa
Tel: +351 214 189 815
Fax: +351 214 177 413
E-mail: Portugal@arjohuntleigh.com

SUISSE / SCHWEIZ

ArjoHuntleigh AG
Fabrikstrasse 8
Postfach
CH-4614 HÄGENDORF
Tél/Tel: +41 (0) 61 337 97 77
Fax: +41 (0) 61 311 97 42

SUOMI

ArjoHuntleigh Finland
c/o Getinge Finland Oy
Riihitontuntie 7 C
02200 Espoo
Finland
Puh: +358 9 6824 1260
E-mail: Asiakaspalvelu.finland@arjohuntleigh.com

SVERIGE

Arjo Sverige AB
Hans Michelsensgatan 10
SE-211 20 MALMÖ
Tel: +46 (0) 10 494 7760
Fax: +46 (0) 10 494 7761
E-mail: kundservice@arjohuntleigh.com

UNITED KINGDOM

ArjoHuntleigh UK
ArjoHuntleigh House
Houghton Hall Park
Houghton Regis
UK-DUNSTABLE LU5 5XF
Tel: +44 (0) 1582 745 700
Fax: +44 (0) 1582 745 745
E-mail: sales.admin@arjohuntleigh.com

USA

ArjoHuntleigh Inc.
2349 W Lake Street Suite 250
US-Addison, IL 60101
Tel: +1 630 307 2756
Free: +1 800 323 1245 Institutional
Free: +1 800 868 0441 Home Care
Fax: +1 630 307 6195
E-mail: us.info@arjohuntleigh.com

ゲティンゲグループ・ジャパン株式会社
〒140-0002
東京都品川区東品川 2-2-8
スフィアタワー天王洲 23F
電話 : 03-6863-6642
Fax : 03-5463-6856

ARJOHUNTLEIGH
GETINGE GROUP



ArjoHuntleigh AB
Hans Michelsensgatan 10
211 20 Malmö, Sweden
www.arjohuntleigh.com



ArjoHuntleigh is a world-leading provider of integrated products and solutions that improve the lives of patients and residents with reduced mobility. We help healthcare facilities deliver wellness and effective everyday care, early mobilisation, safe patient handling, venous thromboembolism prevention, pressure injury prevention, hygiene routines, bariatric care and diagnostics. With extensive knowledge and experience, we strive to improve efficiency and ensure a safer and dignified environment for caregivers and their patients.
