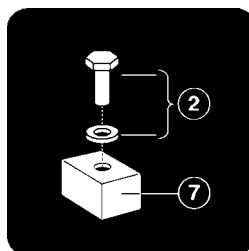


ARJO
ARJO

*Marisa*TM



Parts List



KGX00660.GB
Issue 2
October 2004

Introduction

© ARJO Med. AB LTD

ARJO products are patented or patent pending. Patent information is available by contacting ARJO Med. AB LTD.

Our policy is one of continuous development and we therefore reserve the right to make technical alterations without notice. The content of this publication may not be copied either whole or in part without the consent of ARJO Med. AB LTD.

ARJO Med. AB LTD. strongly advise and warn that only ARJO Company Designated Parts, which are designed for the purpose, should be used on equipment and other appliances supplied by ARJO, to avoid injuries attributable to the use of inadequate parts

Un-authorized modifications on any ARJO Med. AB LTD. equipment may affect it's safety and are in breach of any warranty on it. ARJO Med. AB LTD. will not be held responsible for any accidents, incidents or lack of performance that occur as a result of any un-authorized modification to it's products.

The ARJO Company's Conditions of sale make specific provision confirming no liability in such circumstances

Product names are a trademark of the ARJO Group.

The vertical and horizontal lines printed in the margins adjacent to the text/illustrations in these instructions are for ARJO use only and should be disregarded by the reader.

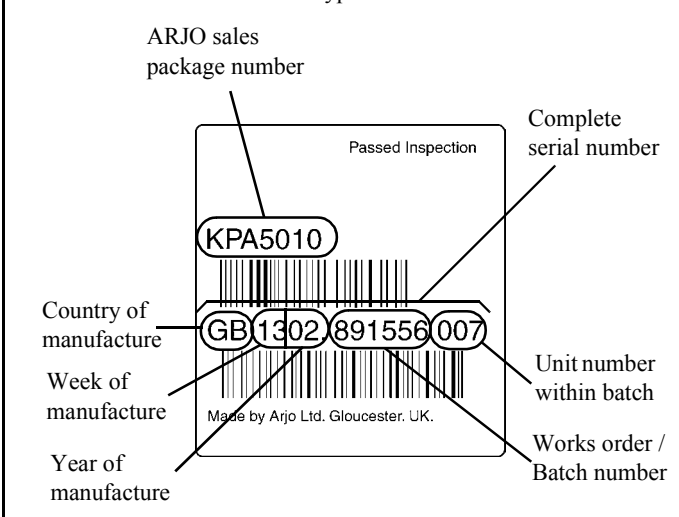
Some of the information contained in these instructions may become outdated, due to improvements made to the product in the future. If you have any questions regarding these instructions or your lifter, please contact ARJO or their approved distributor.

When ordering spare parts it may be necessary to quote the main lifter serial number this number is to be found on the 'bar code' label.

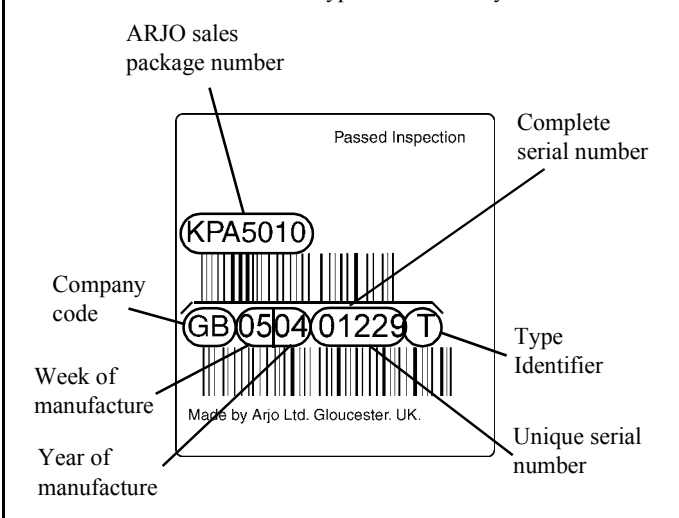
The date of manufacture is shown in the first 6 digits of the serial number. On machines with 15 digit serial numbers the date is shown as e.g. GB1302 981556 007. (GB = country of manufacture, 13 = 13th week of that year and 02= year 2002), the remaining digits, are the machine identification number.

From February 2004 the barcode is of the new 12 digit format. This breaks down as follows. The first two digits are the manufacturers code, where GB = Arjo Gloucester and 88 = Pertinax. The next four digits are the week and year, where 0504 = week 5 and year 2004. The next five digits are a unique sequence of numbers. And the last digit identifies the type of product, where T = Top level component (e.g. the whole lifter), 1 = Modular component, and 8 = Slings.

Serial Number Label: Bar code type from November 1994 onwards.



Serial Number Label: Bar code type from February 2004 onwards.



Note: Bar code labels shown are only typical and not specific to this product.

Contents

SECTION	Page No.
A Mast Assembly	4-7
B Chassis	8-11
C Lift Arm & 4 Point Spreader Bar Assy	12-13
D Lift Arm with Scale & 4 Point Spreader Bar Assy	14-15
E Slings - 4 Point Spreader Bar	16-19
F Electrics	20-21
G Labels	22-23

A - Mast Assembly

Note: Always quote Serial number of lifter, and specify Quantity, Part Number, description and colour (if applicable) when ordering spares.

Note: ** in listed part number refers to country code

Note: .XX in listed part number refers to colour code suffix

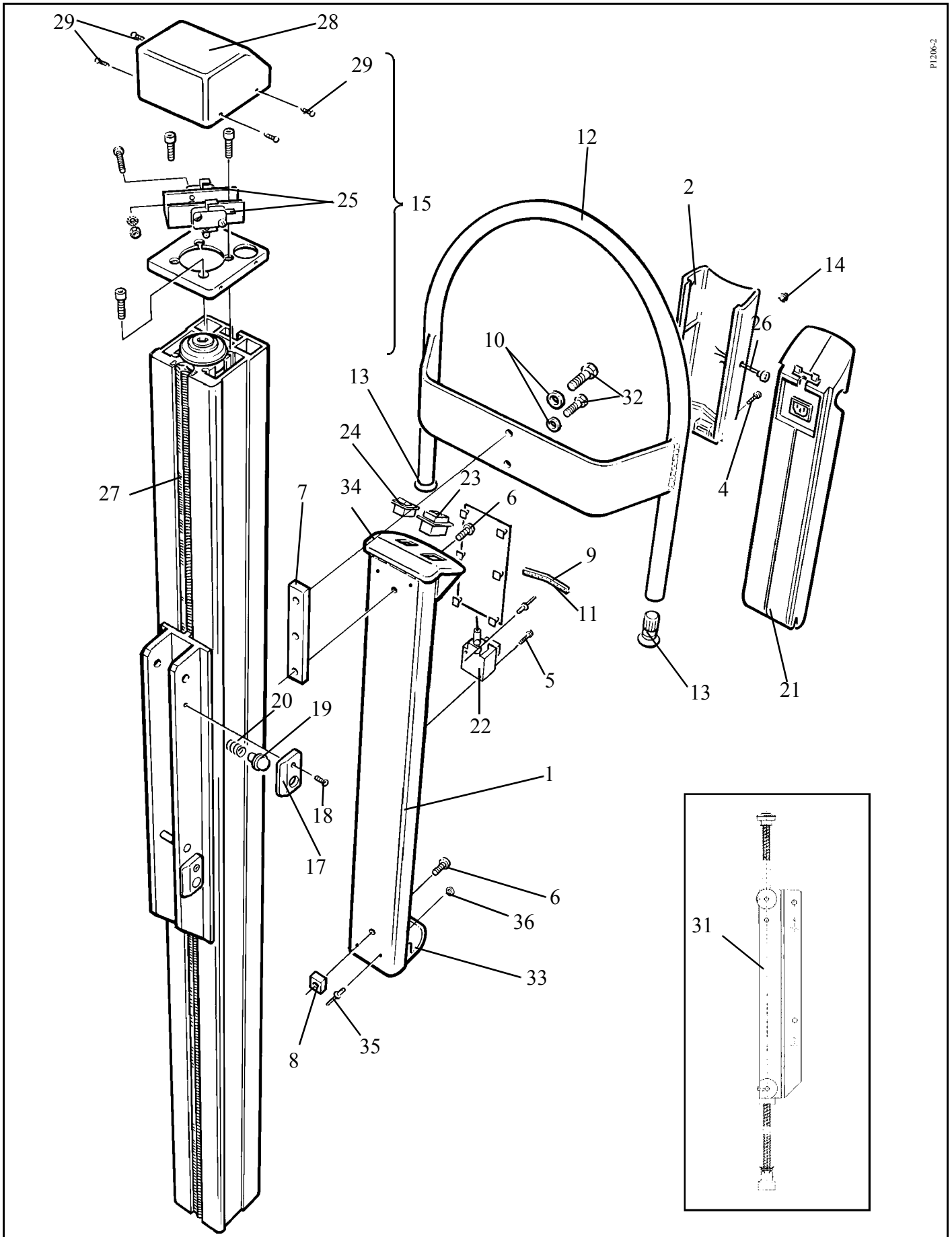
Key to colour suffix: .04 - White, .06 - Beige, .11 - Lilac, .16 - Sapphire blue, .20 - Grey, .21 - Dark Green, .23 - Yellow, .25 - bright Green

Item	Part Number	Qty	Description
1	KGX00731.20	1	Battery Backplate (metal part)
2	KGX00090.20	1	Electrical cover
3	MX05110.0	6	Clip - PCB support
4	AX00441.0	2	Screw, Pan hd. pozi M4 x 8mm long
5	JX69950.0	2	Screw, Pan hd. slot M3 x 20mm long
6	DX08760.0	2	Screw, skt. button hd. M6 x 20mm long
7	KGX00301.0	1	Stud plate assembly
8	KGX00330.0	1	Tee nut
9	KGX00500.0	1	Foam rubber strip
10	JX03550.0	2	Washer M6
11	KRX01060.0	2	Screw, skt, lid M8 x 20mm long
12	KGX00840.xx	1	Handle assembly
13	KGX00210.0	2	End plug
14	KGX00700.0	1	Lens - low battery warning light
15	KGX00010.0	1	Mast assembly
16	KGX00670.0	2	Pin - jib support
17	KGX00540.0	2	Striker plate
18	MX04370.0	2	Screw, slot csk. M4 x 10mm long
19	KGX00550.0	2	Release button
20	KGX00530.0	2	Spring
21	Reference Only	1	Battery - SEE ELECTRICS SECTION
22	Reference Only	1	Battery connection socket - SEE ELECTRICS SECTION
23	Reference Only	1	Emergency stop / reset switch - SEE ELECTRICS
24	Reference Only	1	Emergency lowering switch - SEE ELECTRICS
25	Reference Only	2	Microswitch - SEE ELECTRICS SECTION
26	Reference Only	1	DIN socket - SEE ELECTRICS SECTION
27	KGX00880.0	2	Brush strip
28	KGX00780.16	1	Top cover - Sapphire Blue
	KGX00780.20	1	Top cover - Mid Grey
29	KGX00790.0	4	Self tapping screw
31	KGS007		Carriage and screw assembly including Rollers, Guide Buttons and Springs.
32	DX08760.0	2	Screw, button head M6 x 20mm long
33	KGX00190.20	1	End Locator- grey (Plastic)
34	KGX00160.20	1	Switch Plate Moulding Grey (Plastic)
35	KGX60760.0	1	Pop Rivet Moulding 4.8Øx11
36	DX27670.0	1	Washer 5Ø

Continued...

A - Mast Assembly

P1206-2



Continued...

A - Mast Assembly

Note: Always quote Serial number of lifter, and specify Quantity, Part Number, description and colour (if applicable) when ordering spares.

Note: ** in listed part number refers to country code

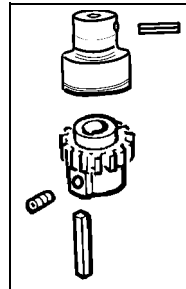
Note: .XX in listed part number refers to colour code suffix

Key to colour suffix: .04 - White, .06 - Beige, .11 - Lilac, .16 - Sapphire blue, .20 - Grey, .21 - Dark Green, .23 - Yellow, .25 - bright Green

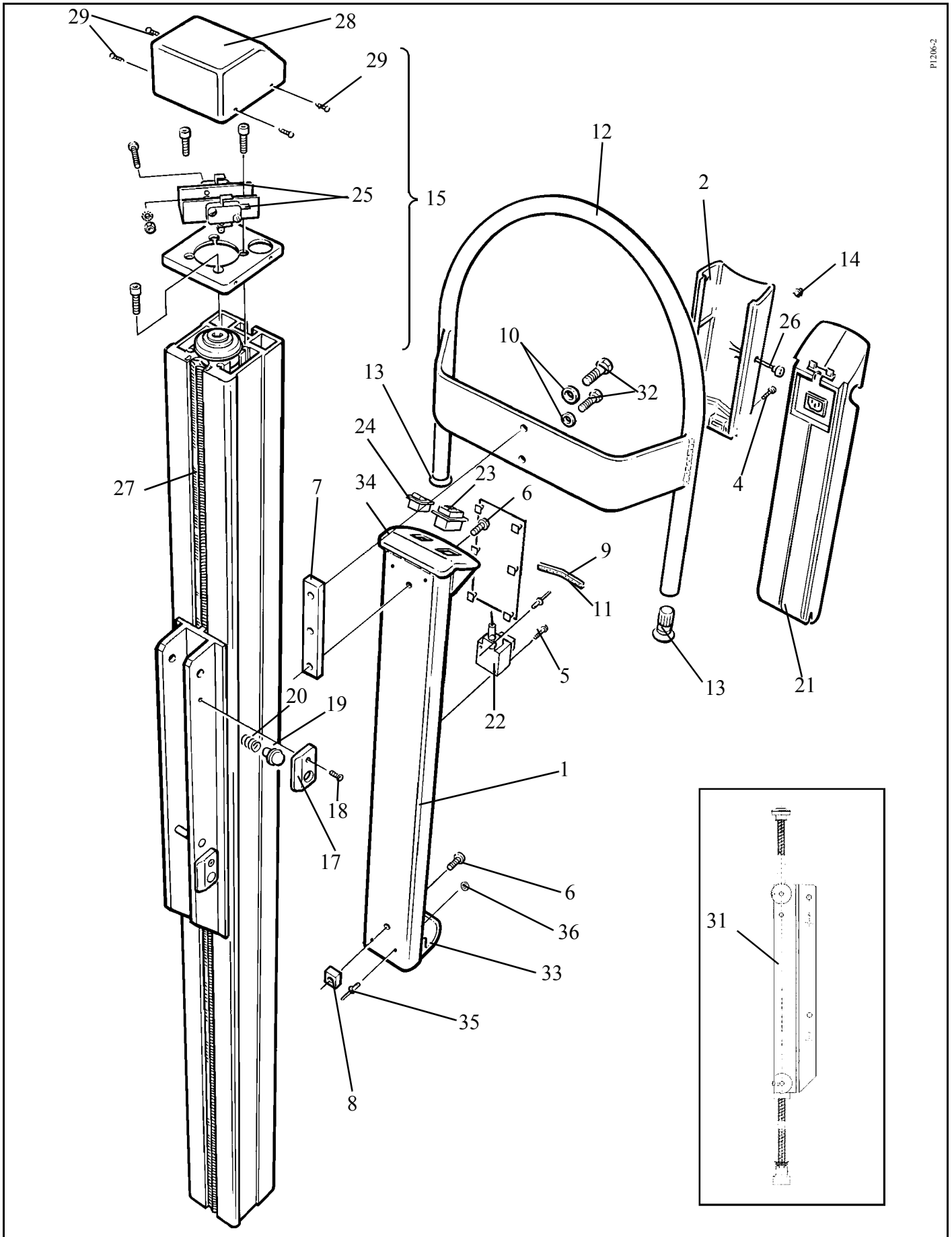
Item	Part Number	Qty	Description
	KGS0010.....		Spares package, SKF top cover assembly - Mid Grey - Comprising items, 30, 31x4
	KGS0012.....		Spares package, SKF Brush strip Comprising items, 16x2
	KGS0013.....		Spares package, Electrical cover Comprising items, 2, 4x2, 9 See also Electrical section in this manual See also Labels section in this manual

KGS0016.....

Coupling Kit



A - Mast Assembly



P1206-2

B - Chassis

Note: Always quote Serial number of lifter, and specify Quantity, Part Number, description and colour (if applicable) when ordering spares.

Note: ** in listed part number refers to country code

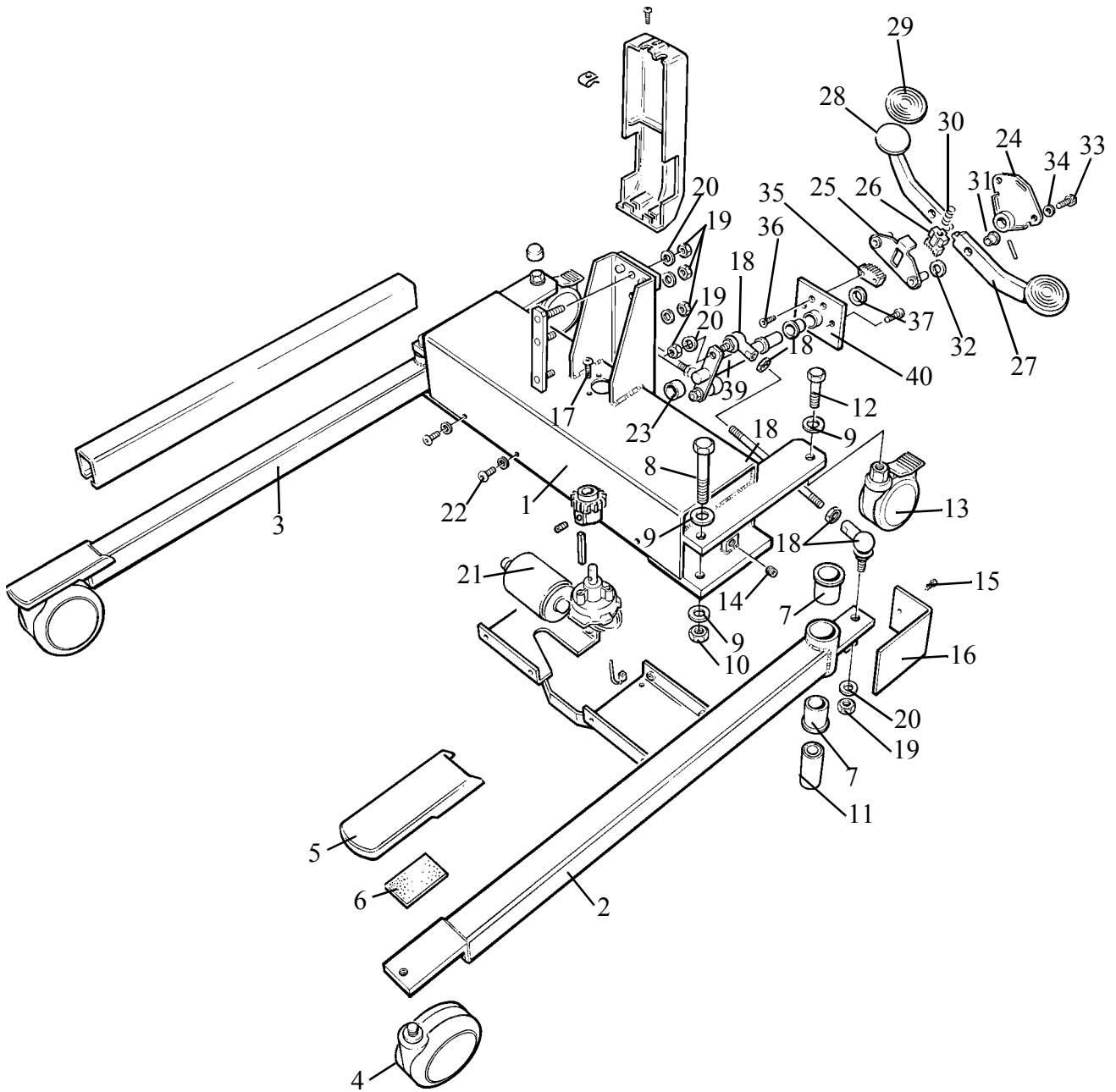
Note: .XX in listed part number refers to colour code suffix

Key to colour suffix: .04 - White, .06 - Beige, .11 - Lilac, .16 - Sapphire blue, .20 - Grey, .21 - Dark Green, .23 - Yellow, .25 - bright Green

Item	Part Number	Qty	Description
1	KGX10010.20	1	Chassis assembly - Mid Grey
2	KGX10080.20	1	Chassis leg - left hand - Mid Grey
3	KGX10090.20	1	Chassis leg - right hand - Mid Grey
4	KTX11550.20	2	Front castor, 100mm dia. unbraked - Mid Grey
5	KKX10470.20	2	Chassis foot moulding - Mid Grey
6	KKX10700.0	2	Self adhesive pad
7	KX54360.0	4	Bush
8	KKX11280.0	2	Bolt, hex. hd. M12 x 100mm long
9	DX 08820.0	6	Washer, M12
10	EX45250.0	2	Lock nut M12
11	KX54370.0	2	Bearing
12	EX45240.0	2	Set screw, hex. hd. M12 x 25mm long
13	KKX10480.03	2	Rear castor 100mm dia. braked - metal (Hong Kong)
	KRX26080.20	2	Rear castor 100mm dia. braked - Mid Grey
14	BX07940.0	2	Set screw skt. M10 x 12mm long - half dog point
15	JX03240.0	2	Screw, self tapping pan hd. Pozi no. 10 x 5/8"
16	KGX10340.0	2	End cover plate
17	KGX1054.0	3	Screw, skt. button hd. M6 x 12mm long
18	KGX10360.0	2	Tie bar
19	AX02890.0	7	Nut, hex. M10
20	AX12110.0	7	Washer, M10
21	KGX10480.0		Motor / gearbox, key,drive gear and screw
22	KRX01060.0	8	Screw, skt. button hd. M8 x 20mm long
23	KGX10370.0	1	Bush
24	KGX10290.0	1	Peddle plate
25	KTX01250.0	1	Plate
26	KTX01300.0	1	Gear - moving
27	KGX10060.0	1	Pedal - left hand
28	KGX10070.0	1	Pedal - right hand
29	KTX01210.9	2	Pedal cover
30	KTX01390.0	1	Spring
31	KTX01400.0	2	Bush
32	KTX01410.0	2	Washer
33	EX41770.0	2	Screw, hex. hd. M6 x 16mm long
34	BX07070.0	2	Washer, M6Washer, M6
35	KTX01290.0	1	Gear - static
36	KTX01430.0	2	Screw, skt. csk. hd. M6 x 15mm long
37	KGX10390.0	1	Washer
38	LBX03080.0	1	Flanged bush
39	KGX10110.0	1	Pedal shaft
40	KGX10140.0	1	Pedal plate

B - Chassis

P1207-2



B - Chassis

Note: Always quote Serial number of lifter, and specify Quantity, Part Number, description and colour (if applicable) when ordering spares.

Note: ** in listed part number refers to country code

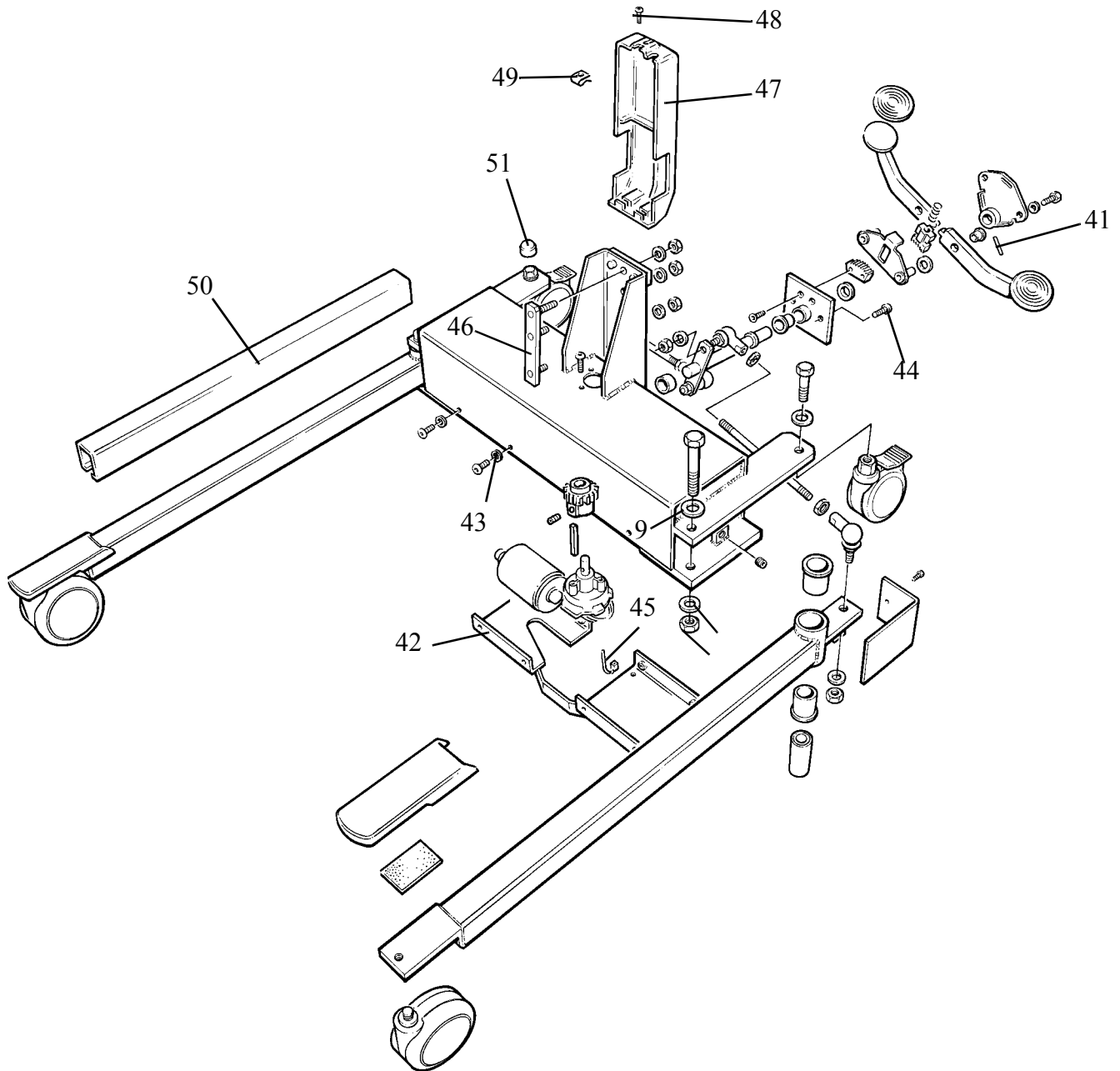
Note: .XX in listed part number refers to colour code suffix

Key to colour suffix: .04 - White, .06 - Beige, .11 - Lilac, .16 - Sapphire blue, .20 - Grey, .21 - Dark Green, .23 - Yellow, .25 - bright Green

Item	Part Number	Qty	Description
41	KGX10520.0	1	Dowel pin 6mm dia. x 30mm long
42	KGX10470.20	1	Stiffening plate
43	DX27560.0	8	Washer M8
44	KKX21400.0	2	Screw, skt. button hd. M8 x 15mm long
45	AX15960.0	1	Cable tie
46	KGX00040.0	1	Joining plate assy.
47	KGX10320.20	1	Pedal cover - grey
48	KKX00830.0	1	Self tapping screw pozi. pan head No. 10 x 3/8" long
49	JX03230.0	1	Captive nut
50	KGX10500.03	2	Leg cover extrusion - plastic - Grey
	KGX10500.23	2	Leg cover extrusion - plastic - Yellow
51	DX09370.0	4	Cap, black M12 hex
	KGX0001.....		Spares package, leg assembly, left hand Comprising items, 2, 5, 6, 7x2
	KGX0002.....		Spares package, leg assembly, right hand Comprising items, 3, 5, 6, 7x2
	KGX0003.....		Spares package, leg opening mechanism Comprising items, 18x2, 19x4, 20x4, 25, 26, 27, 28, 29x2, 30, 31x2, 32x4, 33x2, 34x2, 35, 36x2, 37, 38, 39, 40, 41, 44
	KGX0004.....		Spares package, motor/gearbox Comprising items, 7x3
			See also electrical section in this manual
	KGX0008.....		Spares package, front castor (plastic) Comprising items, 4x2
	KGX0009.....		Spares package, rear castor (plastic) Comprising items, 13x2
	KGX0014.....		Spares package, rear castor (metal -for Hong Kong) Comprising items, 13x2
	KGX3000-03.....		Spares package, Leg cover kit (grey) Comprising Items 50x2

B - Chassis

P1207-2



C - Lift Arm and 4 Point Spreader Bar Assembly

Note: Always quote Serial number of lifter, and specify Quantity, Part Number, description and colour (if applicable) when ordering spares.

Note: ** in listed part number refers to country code

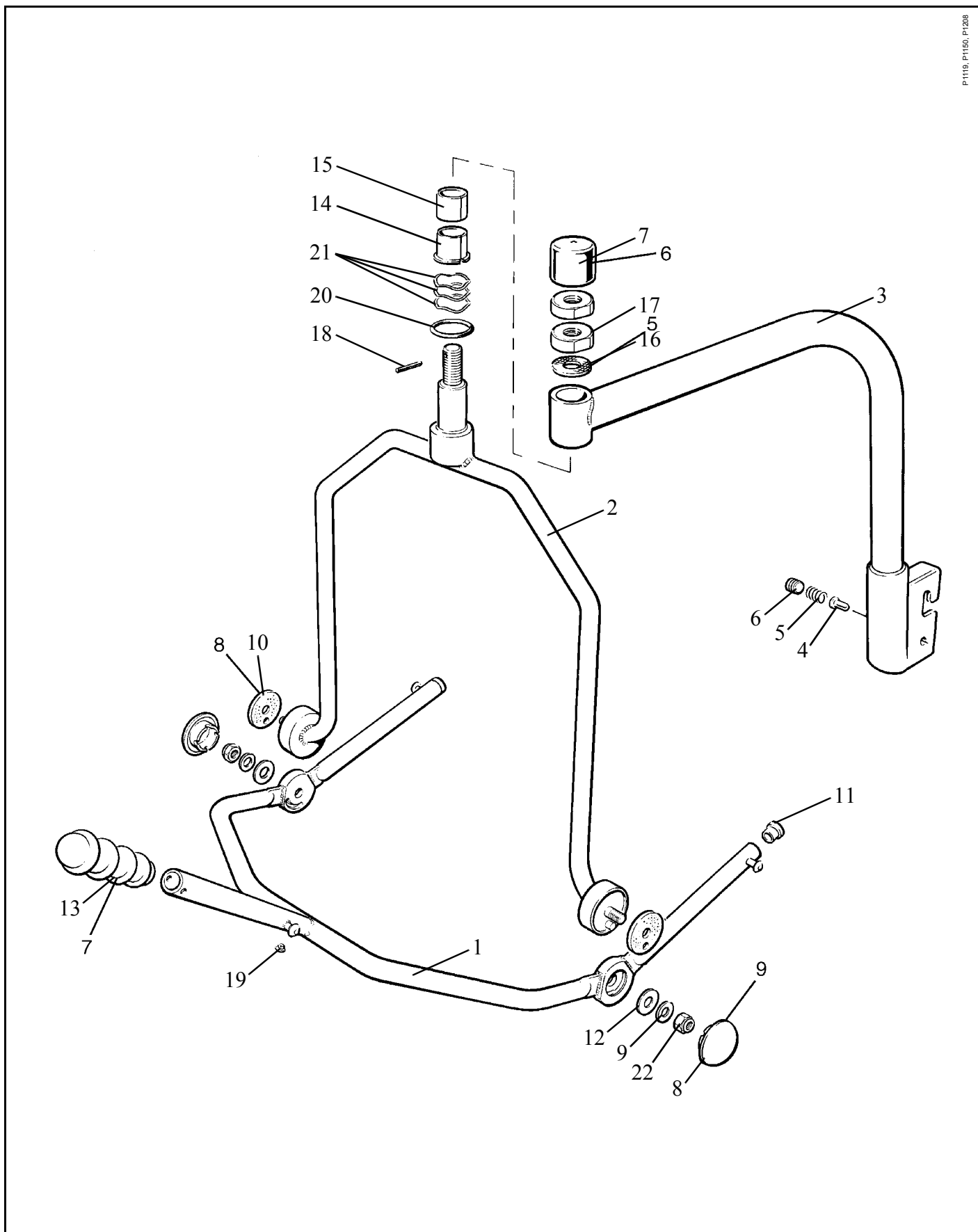
Note: .XX in listed part number refers to colour code suffix

Key to colour suffix: .04 - White, .06 - Beige, .11 - Lilac, .16 - Sapphire blue, .20 - Grey, .21 - Dark Green, .23 - Yellow, .25 - bright Green

Item	Part Number	Qty	Description
1	MX01940.21	1	Lift frame assembly - Dark Green
2	KMX00350.21	1	Lift support assembly - Dark Green
3	KGX20040.20	1	Lift arm - Mid Grey
	KGX20280.20	1	Lift arm - Mid Grey + 100mm
4	KGX20020.0	1	Plunger
5	KGX20070.0	1	Spring
6	AX03000.0	1	Set screw, skt. M12 x 10mm long
7	KMX00320.0	1	Cap (lift support pivot)
8	MX01460.0	2	Cap (lift frame pivot)
9	MX01450.0	2	Washer (lift frame pivot)
10	MX01440.0	2	Friction washer (lift frame pivot)
11	MX02350.0	2	End plug (lift frame tubes)
12	GX20460.0	2	Washer, disc springs (lift frame pivot)
13	AX09300.0	1	Handgrip - Black
14	KMX00360.0	1	Bush - flanged (lift support pivot)
15	KMX00370.0	1	Bush (lift support pivot)
16	KMX00310.0	1	Friction disc (lift support pivot)
17	KMX00680.0	2	Locking nut (lift support pivot)
18	KMX00390.0	1	Spring pin 3mm dia. x 20mm long (lift support pivot)
19	KMX01080.0	1	Plug (handle - lift frame)
20	KRX21100.0	1	'O' ring (lift support pivot)
21	KRX21110.0	3	Bearing spring (lift support pivot)
22	AX01201.0	2	Nut M10 Nyloc - thin (lift frame pivot)

C - Lift Arm and 4 Point Spreader Bar Assembly

P.1119, P.1150, P.1208



D - Lift Arm with Scale and 4 Point Spreader Bar Assembly

Note: Always quote Serial number of lifter, and specify Quantity, Part Number, description and colour (if applicable) when ordering spares.

Note: ** in listed part number refers to country code

Note: .XX in listed part number refers to colour code suffix

Key to colour suffix: .04 - White, .06 - Beige, .11 - Lilac, .16 - Sapphire blue, .20 - Grey, .21 - Dark Green, .23 - Yellow, .25 - bright Green

Item	Part Number	Qty	Description
1	KGX20250.0	1	Plug
2	KGX20240.0	2	Screw, skt. button head M12 x 40mm long
3	KRX21160.0	1	Load cell 2003 & Display
4	KGX20130.03	1	Scale cover - Mid Grey
5	KGX20170.0	2	Set screw, hex. hd. M12 x 60mm long
6	KGX20140.03	1	Lift arm - Mid Grey
	KGX20300.20	1	Lift arm - Mid Grey + 100mm
7	KMX00320.0	1	Cap (lift support pivot)
8	KMX00390.0	1	Spring pin 3mm dia. x 25mm long
9	KMX00680.0	2	Locking nut (lift support pivot)
10	KMX00310.0	1	Friction disc (lift support pivot)
11	KMX00370.0	1	Bush
12	GX20460.0	2	Washer disc spring
13	KMX00350.21	1	Lift support - Dark Green
14	MX02350.0	2	End plug (lift frame tubes)
15	MX01450.0	2	Washer (lift frame pivot)
16	AX01201.0	2	Nut, M10 Nyloc - thin
17	KRX21110.0	3	Bearing spring (lift support pivot)
18	MX01460.0	2	Cap (lift frame pivot)
19	MX01440.0	2	Friction washer (lift frame pivot)
20	AX09300.0	1	Handgrip - Black
21	KMX01080.0	1	Plug (handle - lift frame)
22	MX01940.21	1	Lift frame - Dark Green
23	KGX20070.0	1	Spring
24	KGX20160.20	1	Jib - Mid Grey
25	LBX00820.0	1	Set screw, skt. M5 x 6mm long - half dog point
26	KGX20020.0	1	Plunger
27	AX03000.0	1	Set screw skt. M12 x 10mm long knurl cup point
28	KMX00360.0	1	Flanged bush (lift support pivot)
29	KRX21100.0	1	'O' ring (lift support pivot)

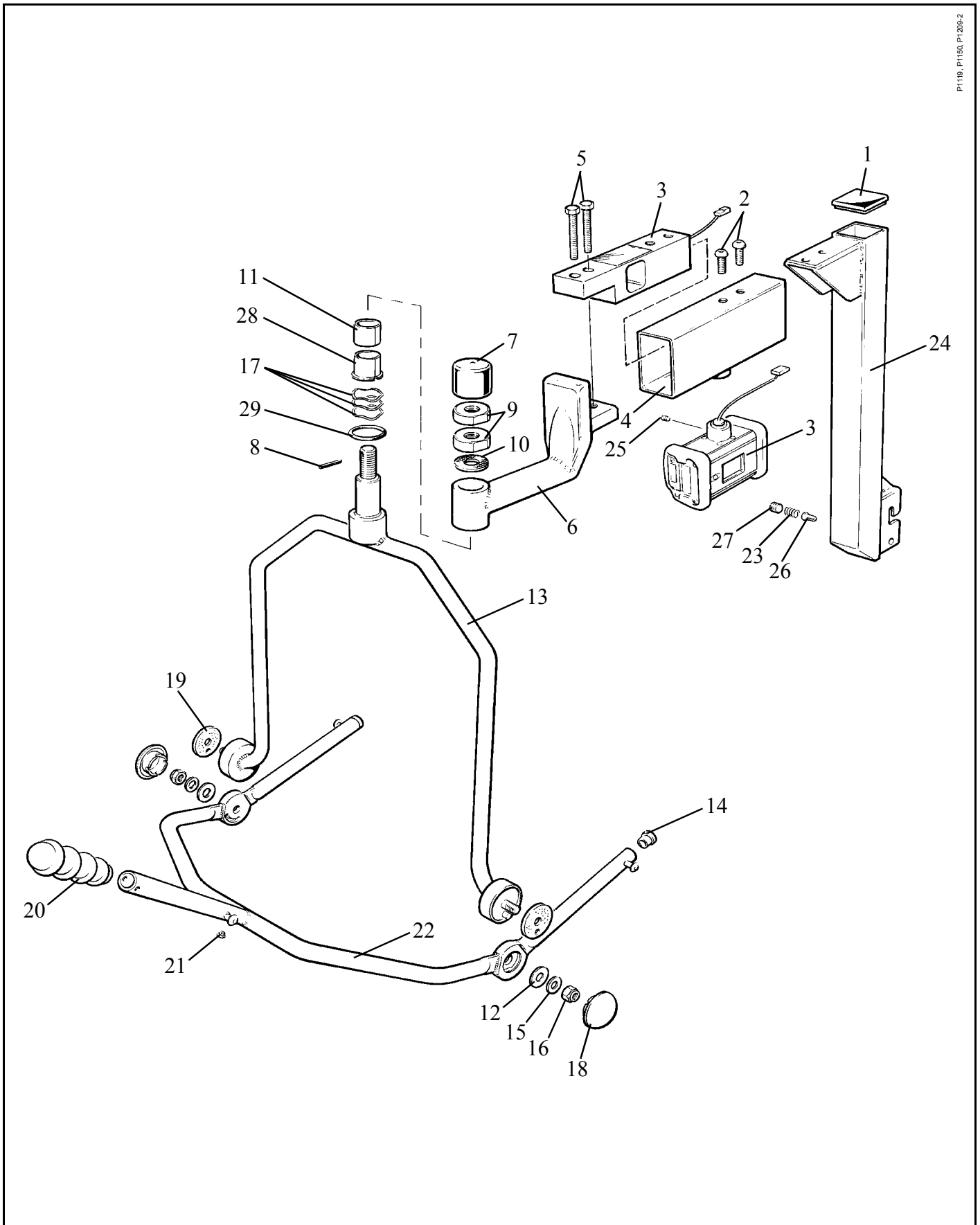
} Not illustrated
but similar profile
to items 3-5

} Not illustrated
but similar profile
to items 3-5

Continued...

D - Lift Arm with Scale and 4 Point Spreader Bar Assembly

P1119, P1150, P1205-2



Continued...

F - Electrics

Note: Always quote Serial number of lifter, and specify Quantity, Part Number, description and colour (if applicable) when ordering spares.

Note: ** in listed part number refers to country code

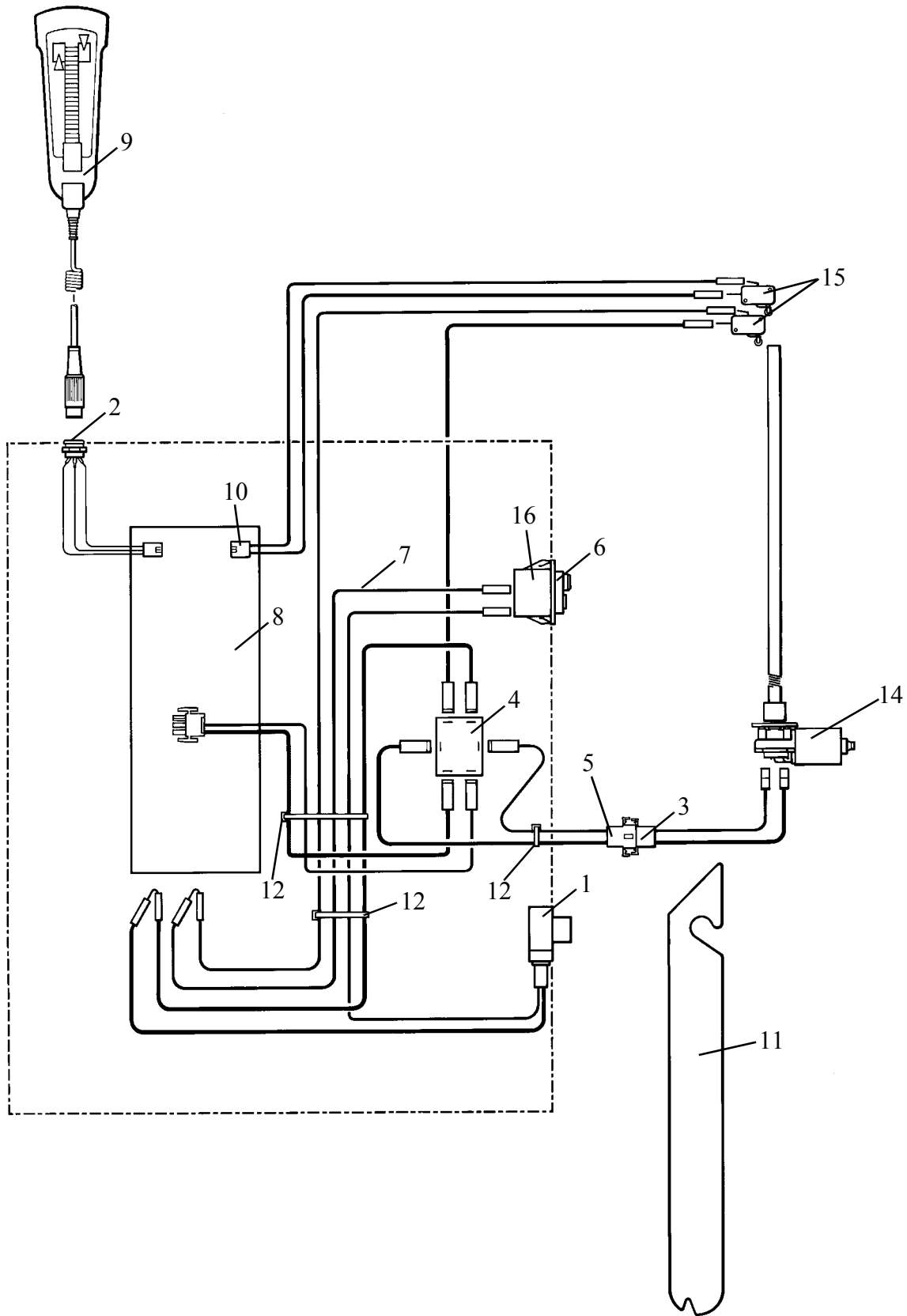
Note: .XX in listed part number refers to colour code suffix

Key to colour suffix: .04 - White, .06 - Beige, .11 - Lilac, .16 - Sapphire blue, .20 - Grey, .21 - Dark Green, .23 - Yellow, .25 - bright Green

Item	Part Number	Qty	Description
1	KGX00450.0	1	Wire assembly No. 2 includes battery connection socket
2	KGX00520.0	1	Wire assembly No. 3 - includes DIN socket
3	KGX00570.0	1	Wire assembly No. 4 (mast to chassis connection)
4	KGX00510.0	1	Emergency lowering switch - includes wires No. 7, 8, 9 and wire assembly No. 1
5	JX70250.0	1	Plug housing - 3 way (mast to chassis connection)
6	KTX00400.0	1	Switch start / stop (emergency stop / reset)
7	KGX00610.0	1	Wire No. 4
8	KGX00260.0	1	PCB board
9	KTX00890.0	1	Handset and cable
10	KGX00620.0	1	Connector housing - 10 way
11	NDA0100.20	1	Battery 24V - Grey
12	AX15960.0	1	Cable tie
13	NDA2100.**	1	Battery charger (not illustrated)
14	KGX10480.0	1	Motor / gearbox / drive coupling / key & grub screw
15	KRX15350.0	2	Microswitch
16	KRX00820.0	1	Circuit breaker
	NDA2100-GB	A/R	Battery charger - U.K. (not illustrated)
	NDA1100-GB	A/R	Battery charger - European (not illustrated)
	NDA3100-GB	A/R	Battery charger - Swiss. (not illustrated)
	NDA6100-GB	A/R	Battery charger - Australia. (not illustrated)
	NDA4100-GB	A/R	Battery charger - U.S. (not illustrated)
	KGX0004.....		Spares package, motor/gearbox, Comprising items, 14
			See also chassis section in this manual
	KGX0013.....		Spares package, electrical cover Comprising items, 2
			See also Mast assembly section in this manual See also Labels section in this manual

F- Electrics

P1210



G - Labels

Note: Always quote Serial number of lifter, and specify Quantity, Part Number, description and colour (if applicable) when ordering spares.

Note: ** in listed part number refers to country code

Note: .XX in listed part number refers to colour code suffix

Key to colour suffix: .04 - White, .06 - Beige, .11 - Lilac, .16 - Sapphire blue, .20 - Grey, .21 - Dark Green, .23 - Yellow, .25 - bright Green

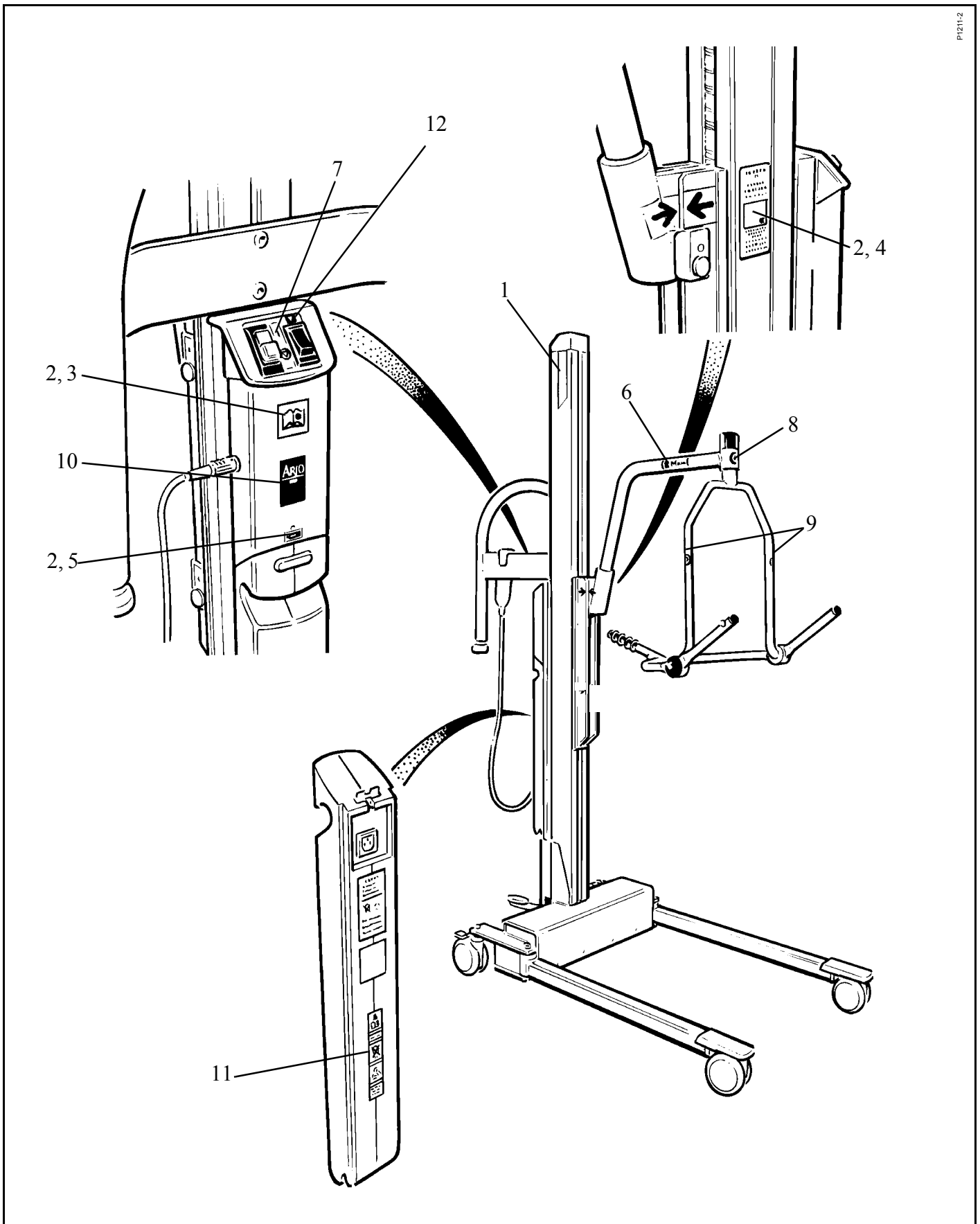
Item	Part Number	Qty	Description
1	KGX00680.16	2	Label - Marisa - Sapphire Blue
2	KGX90000.**	1	Label set - Read Operating Instructions - Safe Working Load - Low Battery Warning
			} All languages except as listed below
3	AX05780.**	1	Label - Read Operating Instructions For Czech,
4	KGX00480.**	1	Label - Safe Working Load Cantonese and Japanese
5	KRX05020.0	1	Label - Low Battery Warning languages only
6	KGX00460.0	2	Label - Marisa and Logo
7	KGX00470.**	1	Label - Reset / Stop
8	LBX02460.0	1	Label - Sling Size Guide
9	KRX01570.0	2	Label - Safe Working Load - 190 kg (420lbs)
10	KGX00690.0	1	Label - Arjo
11	Reference Only		Label - Recycling - NOT A SPARE
12	KRX05070.0	1	Label - system failure lower override identification
13	KDX01640.0	1	Label - CE,Scale jib (not illustrated)

KGS0013

Spares package electrical cover
Comprising item, 10

See also Mast Assembly section in this manual
See also Electrical section in this manual

G - Labels



Notes

Notes

AUSTRALIA
ARJO Hospital Equipment Pty. Ltd.
154 Lytton Road
Bulimba
Brisbane
QLD, 4171
Tel. (61) 7 3395 6311
Fax. (61) 7 3395 6712

SCANDINAVIA
Sverige
ARJO SCANDINAVIA AB
Box 61, 241 21 Eslov
Tel. 0413-645 00
Fax 0413-645 83
E-post: kundservice@arjo.se

Danmark
ARJO SCANDINAVIA
Postboks 51, 4632 Bjæverskov
Tel. 45 93 27 37
Fax. 45 93 27 39
E-post: kundservice@arjo.se

Norge
ARJO SCANDINAVIA
Enebakkveien 117 d, 0680 Oslo
Tel. 98 28 11 70
Fax. 23 05 11 99
E-post: kundservice@arjo.se

BELGIQUE / BELGIË
ARJO Hospital Equipment nv/sa
Ternesselei 248
B-2160 WOMMELGEM
Tel : 03 353 91 00
Fax : 03 353 91 01
Email: info@arjo.be

CANADA
ARJO Canada Inc.
1575 South Gateway Road
Unit C
Mississauga, ONTARIO
L4W 5J1
Tel. 1 800 665 4831
Fax. 1 800 309 1116

ČESKÁ REPUBLIKA
ARJO Hospital Equipment s.r.o.
Strmá 35
CZ-616 00 BRNO
Tel. 549 254 252
Fax. 541 213 550

DEUTSCHLAND
ARJO Systeme für Rehabilitation
GmbH
Christof-Ruthof-Weg 6
55252 Mainz-Kastel
Tel.: 06134 186 0
Fax: 06134 186 160
E-mail: info@arjo.de

ESPAÑA
ARJO SPAIN, S.A.
C/ San Rafael, nº 6
28108 ALCOBENDAS (MADRID)
SPAIN
Tel. 00 34 91 490 0636
Fax. 00 34 91 490 0637

FRANCE
ARJO Equipements Hospitaliers sa
45, avenue de l'europe
Eurocit BP133
F-59436 RONCQ CEDEX
FRANCE
Tel: 03 20 28 13 13
Fax: 03 20 28 13 14
Email: info@arjo.fr

GREAT BRITAIN
ARJO.
St. Catherine Street
Gloucester, GL1 2SL
ENGLAND U.K.
Tel. (08702) 430430
Fax. (01452) 428344

ARJO (Ireland) Ltd
Unit 6B
Calmount Park
Dublin 12
Eire
Tel. 00 35 3145 65565
Fax. 00 35 3145 65575

HONG KONG
ARJO Far East Ltd.
1001-3 APEC Plaza,
49 Hoi Yuen Road,
Kwun Tong, Kowloon,
HONG KONG
Tel. 852 2508 9553
Fax. 852 2508 1416

ITALIA
ARJO Italia S.p.A.
Via Poggio Verde, 34
00148 ROMA
Tel. 06 6566356 - 57
Fax. 06 65663212
promo@arjo.it

NEDERLAND
ARJO NEDERLAND B.V.
De Blomboogerd 8
4003 BX TIEL
Postbus 6116
4000 HC TIEL
Tel: 0344 64 08 00
Fax: 0344 64 08 85
E-mail: info@arjo.nl

ÖSTERREICH
ARJO GmbH
Föhrenweg 5
A-6065 THAUR
Tel. 05223 493350
Fax. 05223 49335075

ARJO Poland Sp. z o.o.
ul. Lirowa 27,
02-387 Warsaw,
Poland
tel./fax office: +48 22 882-06-26..28
tel./fax serive: +48 22 882-06-29

SCHWEIZ / SVIZZERA
ARJO INTERNATIONAL AG
Florenzstr. 1d,
Postfach 4023
BASEL
Tel. +41 61 373 26 89.
Fax. +41 61 373 11 00

SCHWEIZ
ARJO-SIC AG
Florenzstr. 1d
Postfach
4023 BASEL
Tel. 0041 61 337 97 77
Fax 0041 61 311 97 42

USA
ARJO, Inc.
50 North Gary Avenue
Roselle, IL 60172
Tel. 1-800-323-1245
Fax. 1-888-594-ARJO(2756)

ARJO
and

www.ARJO.com

If your country is not listed here, please contact your local distributor, or ARJO
International AB, Box 61, S-241 21 ESÖV, SWEDEN.
Tel +46 413 64500. Fax +46 413 555586.

© ARJO MED. AB LTD



FM 21964
ISO 9001:2000



MD 76970
ISO 13485



EMS73184
ISO 14001



ARJO, UK Branch of ARJO MED AB LTD